

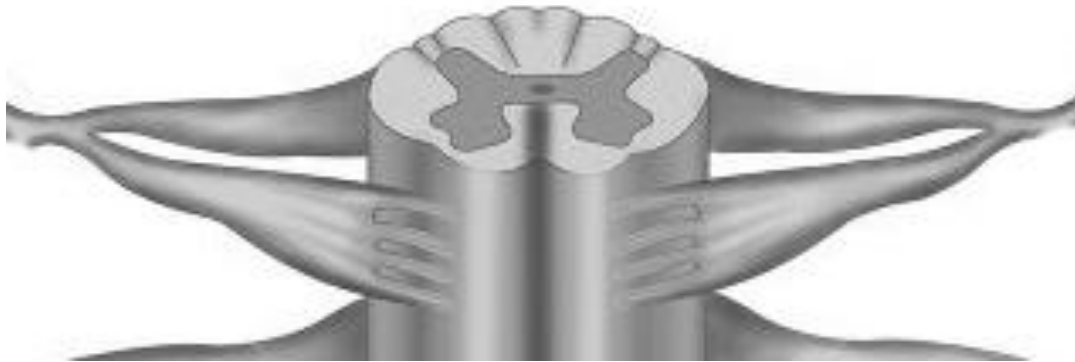
Topography of the  
spinal cord's segments

1. Using different colors, indicate the parts of the vertebral column and the spinal cord and the spinal cord's segments (cervical, thoracic, lumbar, sacral and coccygeal).

2. Indicate the listed structures on the picture:

1. Medullary cone, *conus medullaris*;
2. Filum terminale, *filum terminale*;
3. Cervical enlargement, *intumescentia cervicalis*;
4. Lumbosacral enlargement, *intumescentia lumbosacralis*;
5. Cauda equina, *cauda equina*;

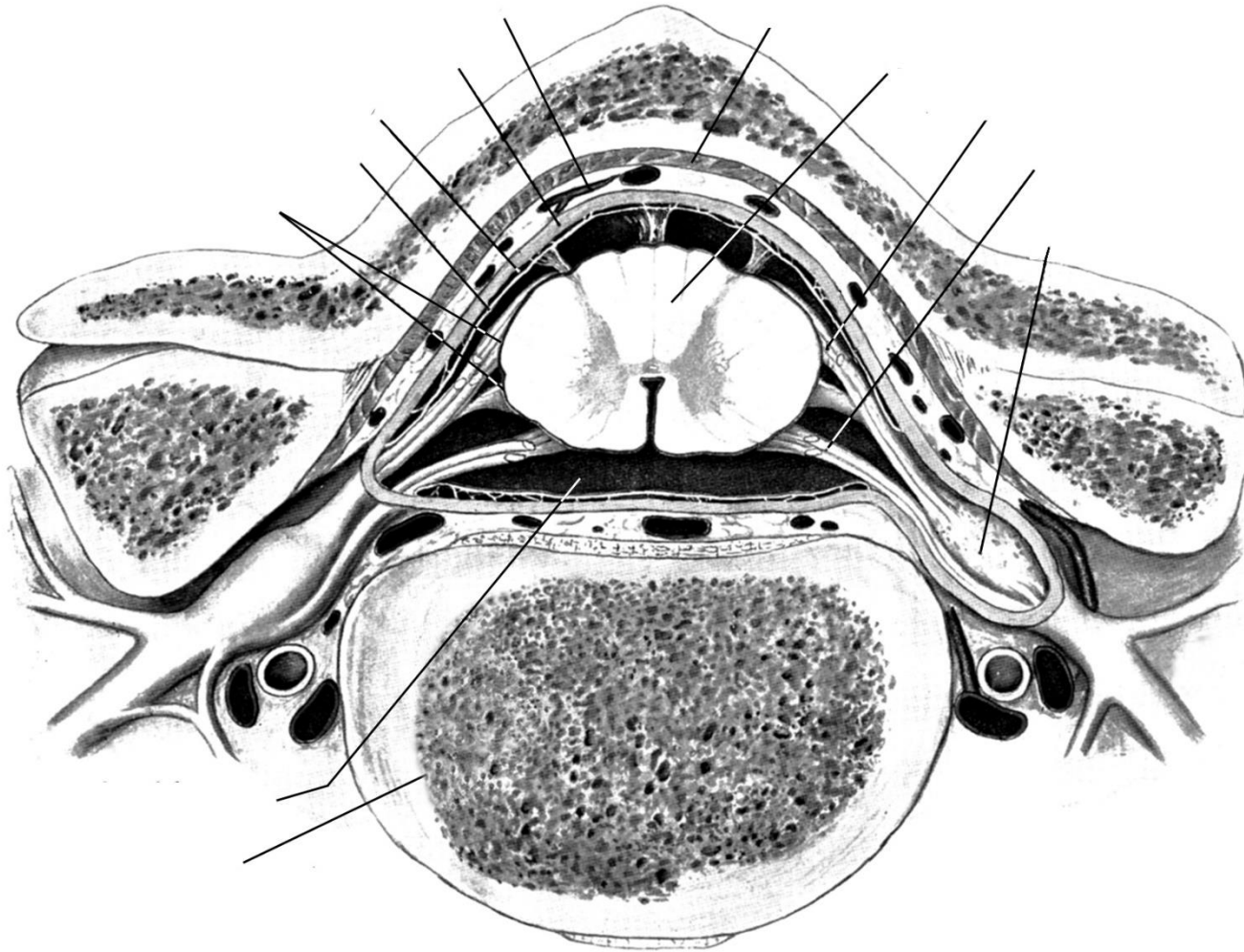
**3. Indicate the listed structures on the following diagram.**



**The diagram of the  
spinal cord's segment  
(mid-thoracic level)**

1. Anterior median fissure, *fissura mediana anterior*;
2. Posterior median sulcus, *sulcus medianus posterior*;
3. Anterolateral sulcus, *sulcus anterolateralis*;
4. Posterolateral sulcus, *sulcus posterolateralis*;
5. Posterior root ganglion, or spinal ganglion, *ganlion sensorium nervi spinali (ganglion spinale)*;
6. Anterior root of the spinal nerve, *radix anterior nervi spinalis*;
7. Posterior root of the spinal nerve, *radix posterior nervi spinalis*;
8. Trunk of the spinal nerve, *truncus nervi spinalis*;
9. Central canal, *canalis centralis*;
10. Grey matter of the spinal cord, *substantia grisea*;
11. White matter of the spinal cord, *substantia grisea*;
12. Anterior horn, *cornu anterius*;
13. Posterior horn, *cornu posterius*;
14. Lateral horn, *cornu laterale*;
15. Anterior white commissure, *comissura alba anterior*;
16. Anterior funiculus, *funiculus anterior*;
17. Lateral funiculus, *funiculus lateralis*;
18. Posterior funiculus, *funiculus posterior*;

4. Using the textbook, write the names of the indicated structures.



The meninges of the spinal cord and intermeningeal spaces

