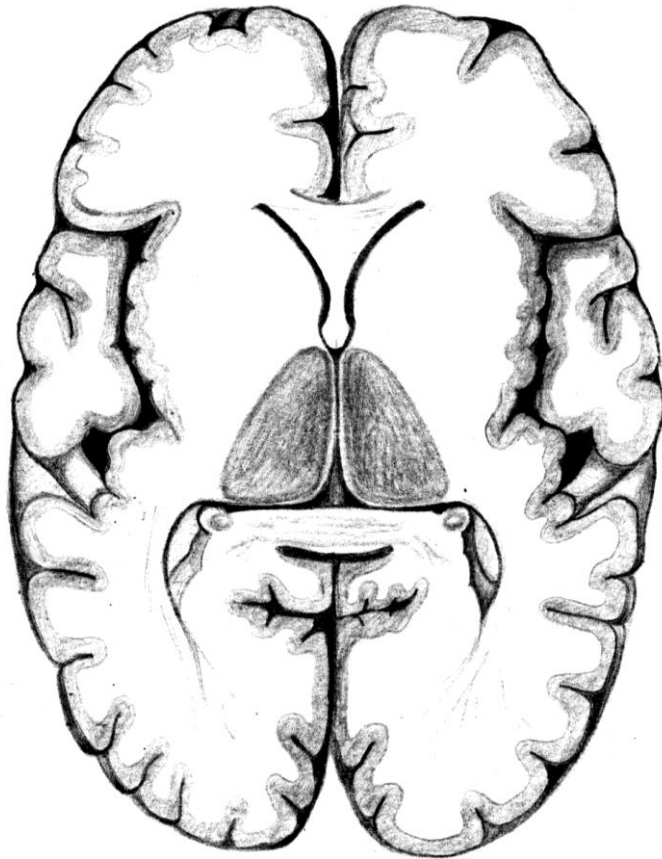


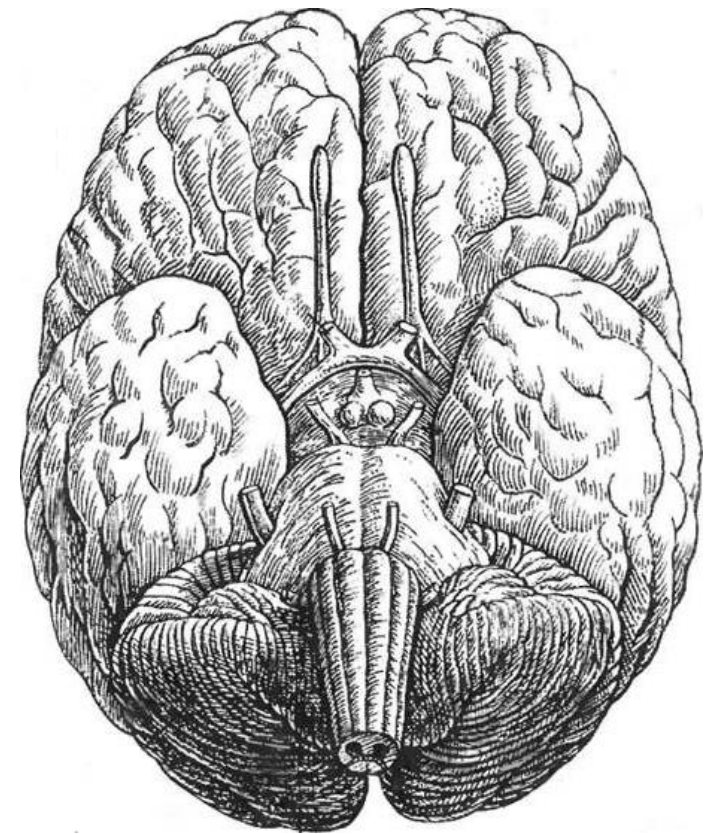
1. Using the textbook, draw the basal nuclei and indicate the external, internal and extreme capsules on the following picture. After that encircle the striatum and pallidum.



Transverse section of the brain

Task 6. Indicate the listed part of the rhinencephalon on the following picture:

1. Olfactory bulb, *bulbus olfactorius*;
2. Olfactory tract, *tractus olfactorius*;
3. Olfactory trigone, *trigonum olfactorium*;
4. Anterior perforated substance, *substantia perforata anterior*.

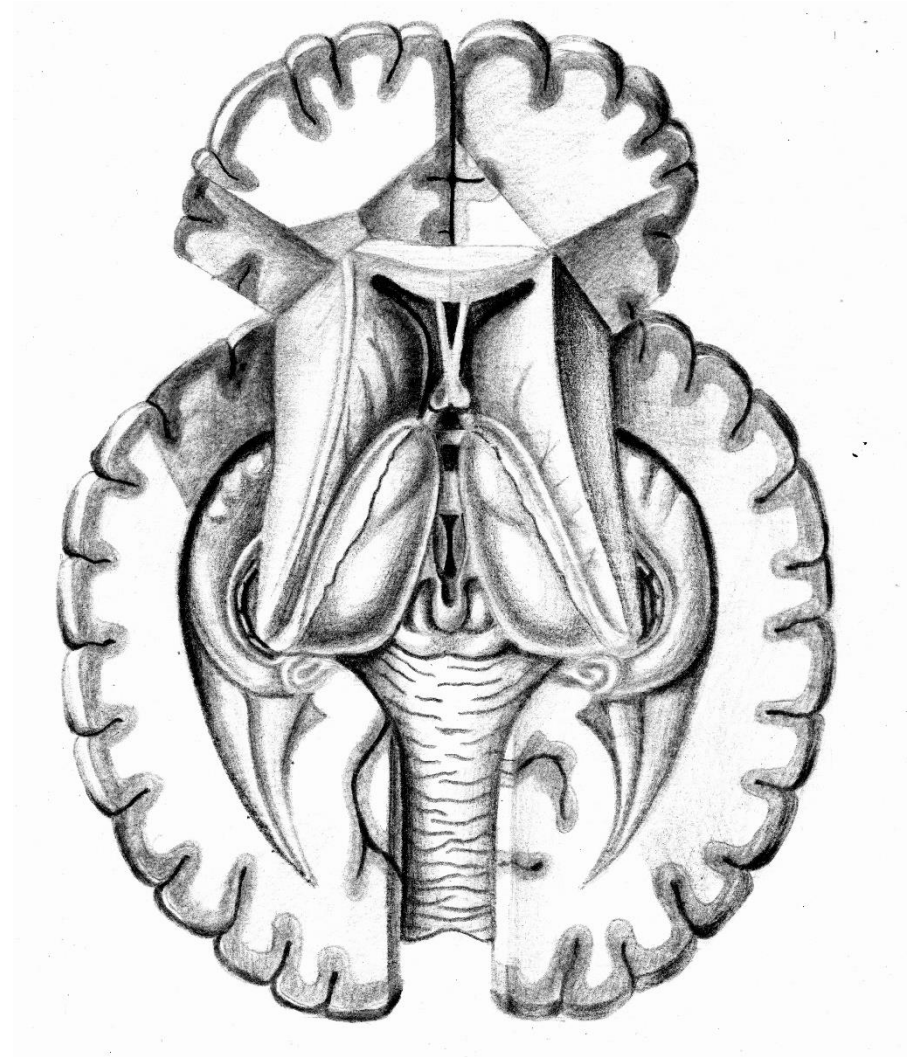


Inferior cerebral surface

Task 7. Using the textbook, indicate the listed structures on the following picture:

1. The structures of the lateral ventricles:

1. Anterior (frontal) horn, *cornu anterius*:
 - Septum pellucidum, *septum pellucidum*;
 - Head of caudate nucleus, *caput nuclei caudati*;
 2. Central part, *pars centralis*:
 - Body of caudate nucleus, *corpus nuclei caudati*;
 - Thalamus, *thalamus*;
 - Stria terminalis, *stria terminalis*;
 - Crura of the fornix, *crura fornicis*;
 3. Posterior (occipital) horn, *cornu posterius*:
 - Bulb of the posterior horn, *bulbus cornu posterioris*;
 - Calcar avis, *calcar avis*;
 - Collateral trigone, *trigonum collaterale*;
 4. Inferior (temporal) horn, *cornu inferius*:
 - Hippocampus, *hippocampus* (Ammon's horn, *cornu Ammoni*);
 - Fimbria of hippocampus, *fimbria hippocampi*;
 - Collateral eminence, *eminencia collateralis*;
- 2. The quadrigeminal plate of the midbrain;**
 - 3. The epithalamus;**
 - 4. The cavity of the III ventricle;**
 - 5. The place of the interventricular foramina (of Monro)**
(mark with arrows)



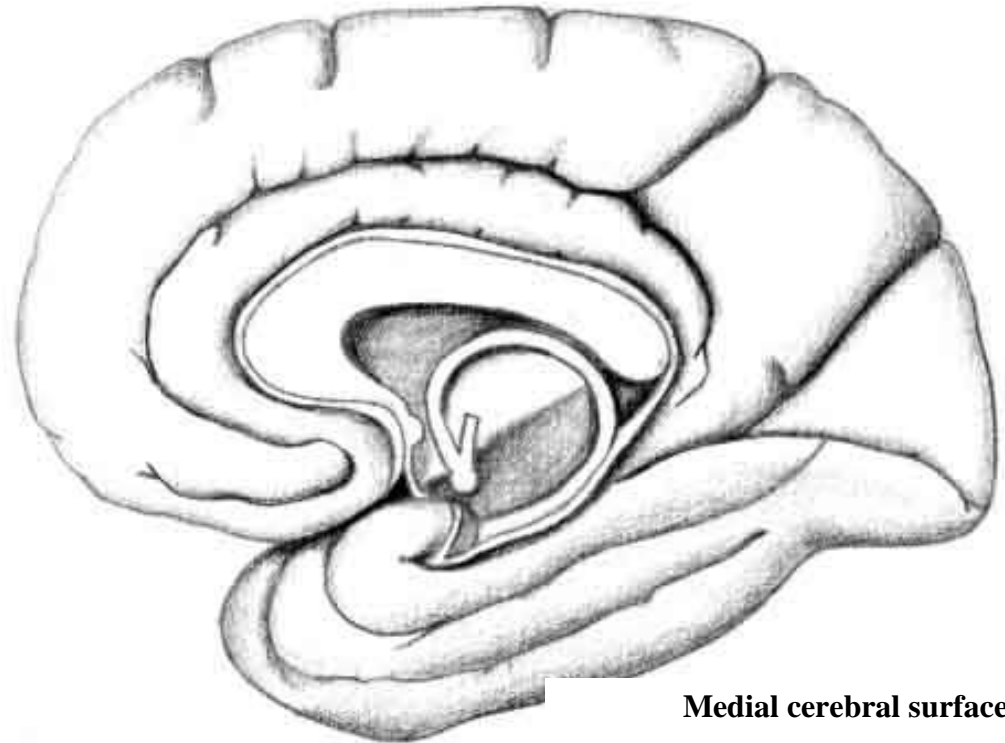
Task 8. Indicate the listed structures on the following pictures:

1. Corpus callosum, *corpus callosum*:
 - splenium, *splenium corporis callosi*;
 - trunk, *truncus corporis callosi*;
 - genu, *genu corporis callosi*;
 - rostrum, *rostrum corporis callosi*;
2. Lamina rostralis, *lamina rostralis*;
3. Lamina terminalis, *lamina terminalis*;
4. Septum pellucidum, *septum pellucidum*;
5. Anterior cerebral commissure, *commissura cerebri anterior*;
6. Commissure of fornix (hippocampal commissure), *commissura fornicis*;
7. Body of fornix, *corpus fornicis*;
8. Columns of fornix, *columnae fornicis*;
9. Crura of fornix, *crura fornicis*;
10. Hippocampus, *hippocampus*;



Fornix

Task 9. Using the textbook, draw schematically the white matter fasciculi (cingulum, superior and inferior longitudinal fasciculi, uncinate and occipitofrontal fasciculi) on the diagram of the medial cerebral surface.



Medial cerebral surface

11. Fimbria of hippocampus, *fimbria of hippocampus*;
12. Mammillary bodies, *corpora mamillaria*

