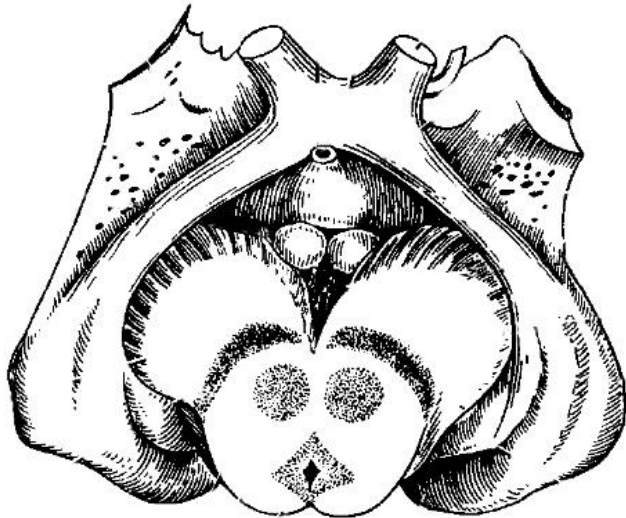
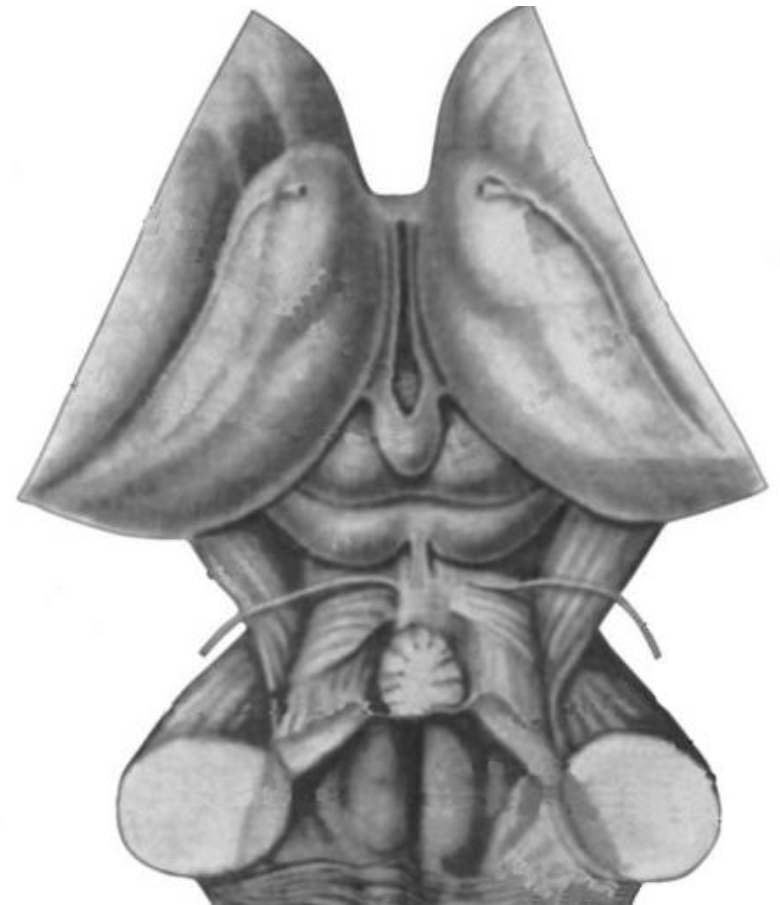


Task 1. Indicate the listed structures on the following pictures:

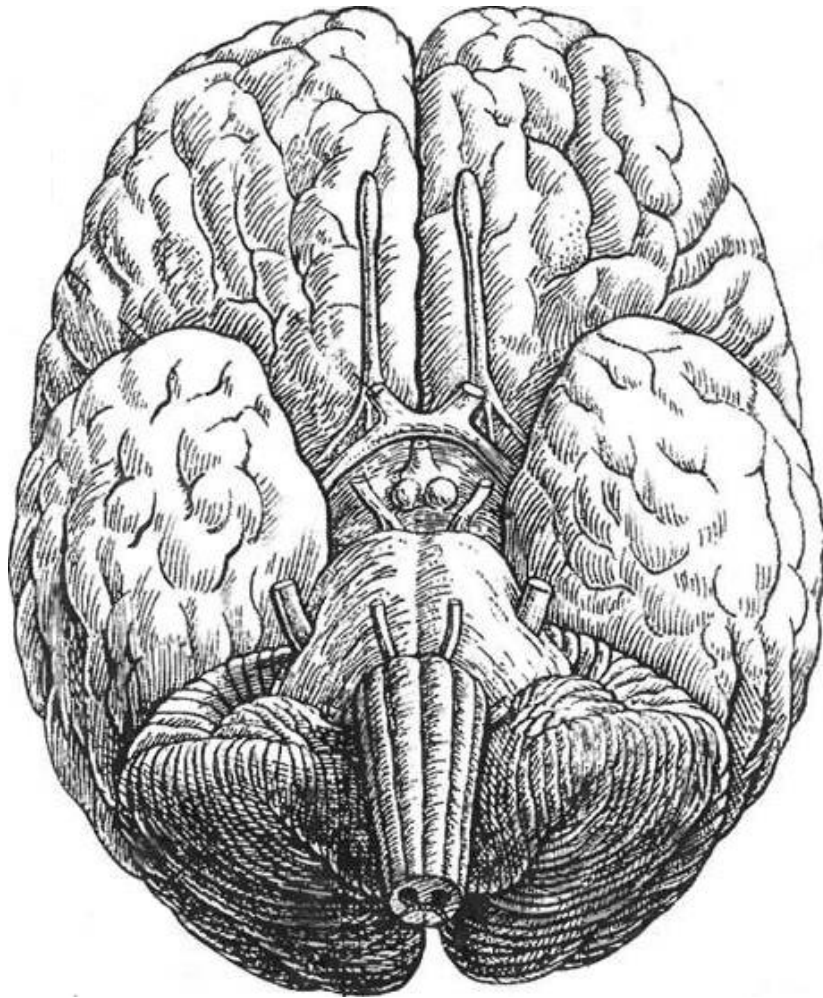
1. Thalamus, *thalamus*;
2. Anterior tubercle, *tuberculum anterius thalami*;
3. Pulvinar, *pulvinar thalami*;
4. Stria terminalis, *stria terminalis*;
5. Stria medullaris, *stria medullaris thalami*.
6. Interthalamic adhesion, *adhesio interthalamica*;
7. Hypothalamic sulcus, *sulcus hypothalamicus*;
8. Subthalamic region, *regio subthalamica propria*;
9. Hypothalamus, *hypothalamus*;
10. III ventricle, *ventriculus tertius*;
11. Optic tract, *tractus opticus*;
12. Base of the cerebral peduncle, *basis pedunculi cerebri*;
13. Tegmental part, *tegmentum mesencephali*;
14. Quadrigeminal (tectal) plate, *lamina tecti*;
15. Substantia nigra, *substantia nigra*;
16. Red nucleus, *nucleus ruber*



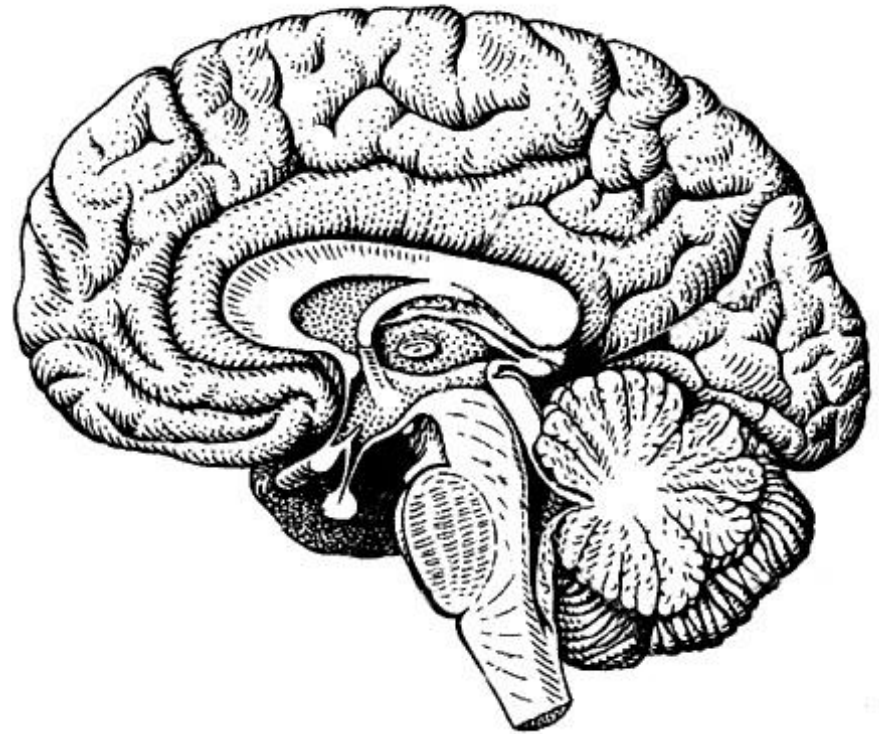
The transverse section of the midbrain;
hypothalamus; metathalamus



The dorsal surface of the pons, midbrain and
diencephalon



The base of the brain



The sagittal section of the brain

Task 2. Paint in different colors the structures of the epithalamus and metathalamus on the following pictures.

EPITHALAMUS

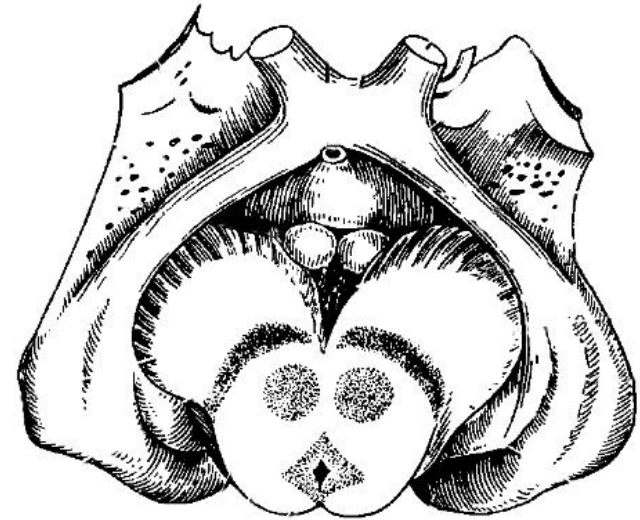
1. Pineal gland, *glandula pinealis* (epiphysis);
2. Habenular trigone, *trigonum habenulae*;
3. Habenulae, *habenulae*;
4. Habenular commissure, *commissura habenularum*;

METATHALAMUS

1. Medial geniculate body, *corpus geniculatum mediale*;
2. Lateral geniculate body, *corpus geniculatum laterale*;



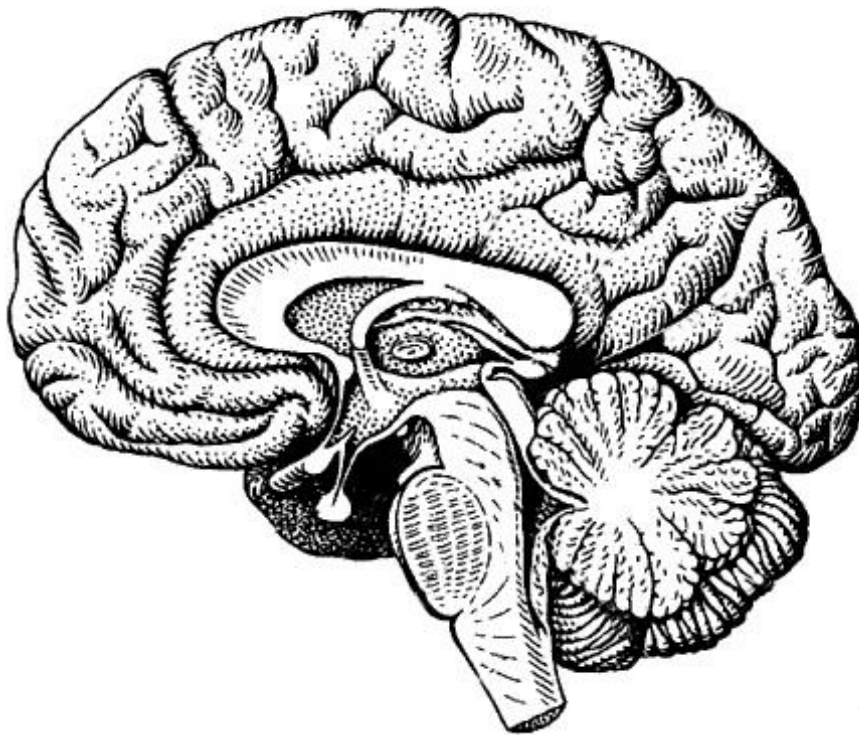
**The dorsal surface of the midbrain and
diencephalon**



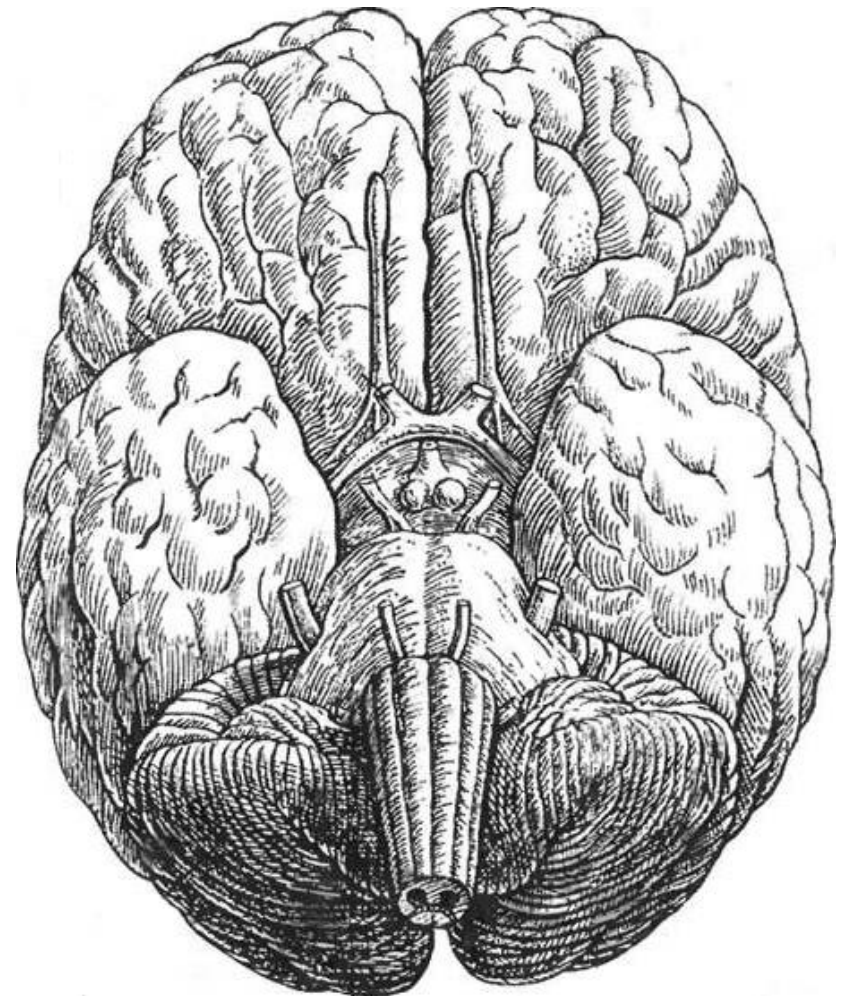
**The transverse section of the midbrain;
hypothalamus; metathalamus**

Task 3. Paint in different colors the structures of the hypothalamus on the following pictures.

1. Mammillary body, *corpus mamillare*;
2. Tuber cinereum, *tuber cinereum*;
3. Infundibulum, *infundibulum*;
4. Hypophysis, *hypophysis* (*glandula pituitaria*);
5. Optic chiasm, *chiasma opticum*;



The sagittal section of the brain



The base of the brain

Task 4. Paint in different colors the walls of the III ventricle, indicating the listed structures on the following picture, and mark the interventricular foramen (of Monro).

The structures comprising the anterior wall:

1. Columns of fornix, *columnae fornices*;
2. Anterior cerebral commissure, *commissura cerebri anterior*;
3. Lamina terminalis, *lamina terminalis*

The structures comprising the posterior wall:

4. Pineal recess, *recessus pinealis*;
5. Posterior cerebral commissure, *commissura cerebri posterior*;
6. Habenular commissure, *commissura habenularum*;

The structure comprising the superior wall:

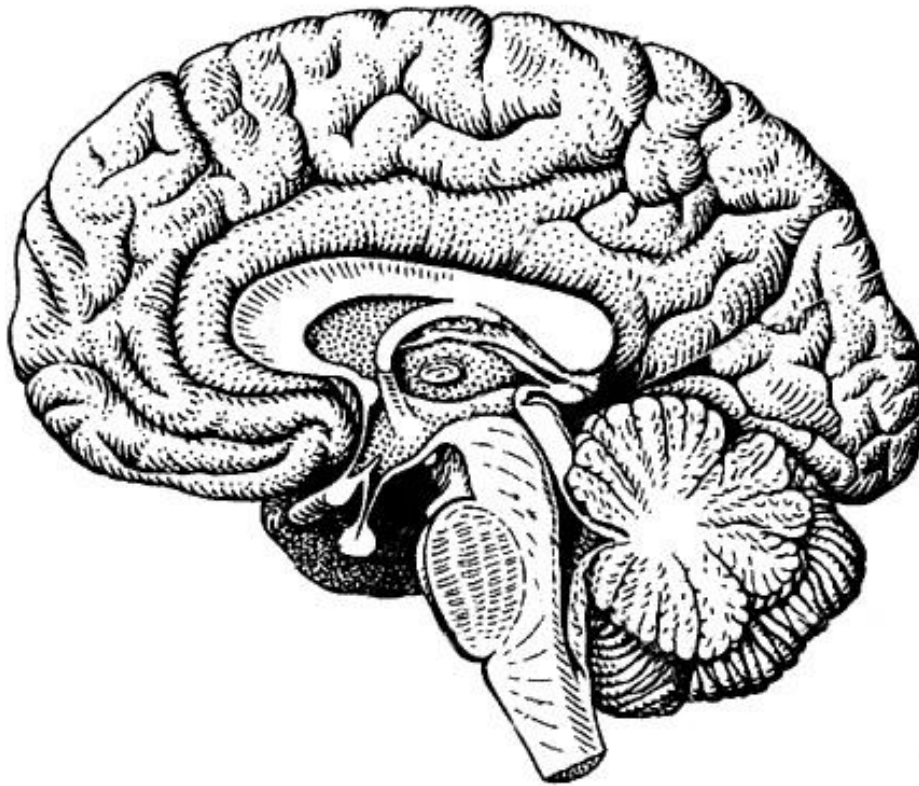
7. Tela choroidea, *tela choroidea*;

The structures comprising the inferior wall:

8. Supraoptic recess, *recessus supraopticus*;
9. Infundibular recess, *recessus infundibuli*;
10. Posterior perforated substance, *substantia perforata posterior*;
11. Mammillary body, *corpus mamillare*;
12. Tuber cinereum, *tuber cinereum*;
13. Optic chiasm, *chiasma opticum*;

The structure comprising the lateral wall:

14. Medial surface of the thalamus



The sagittal section of the brain

