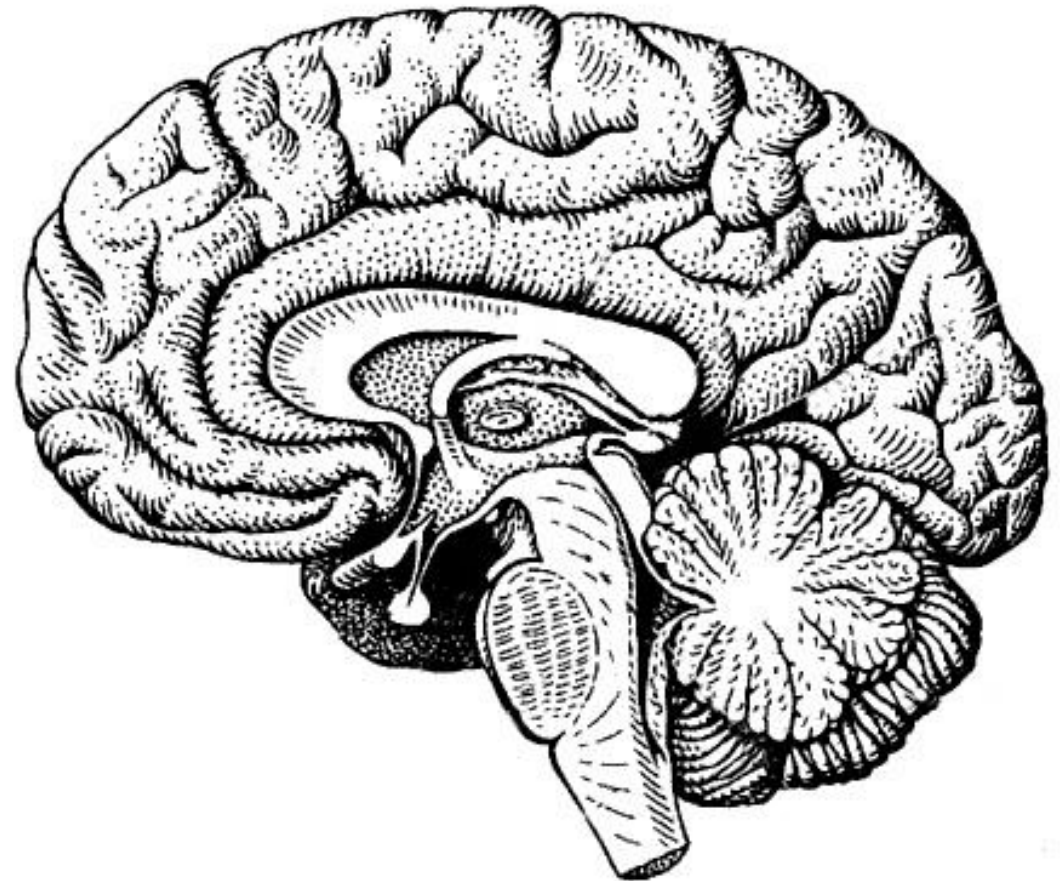
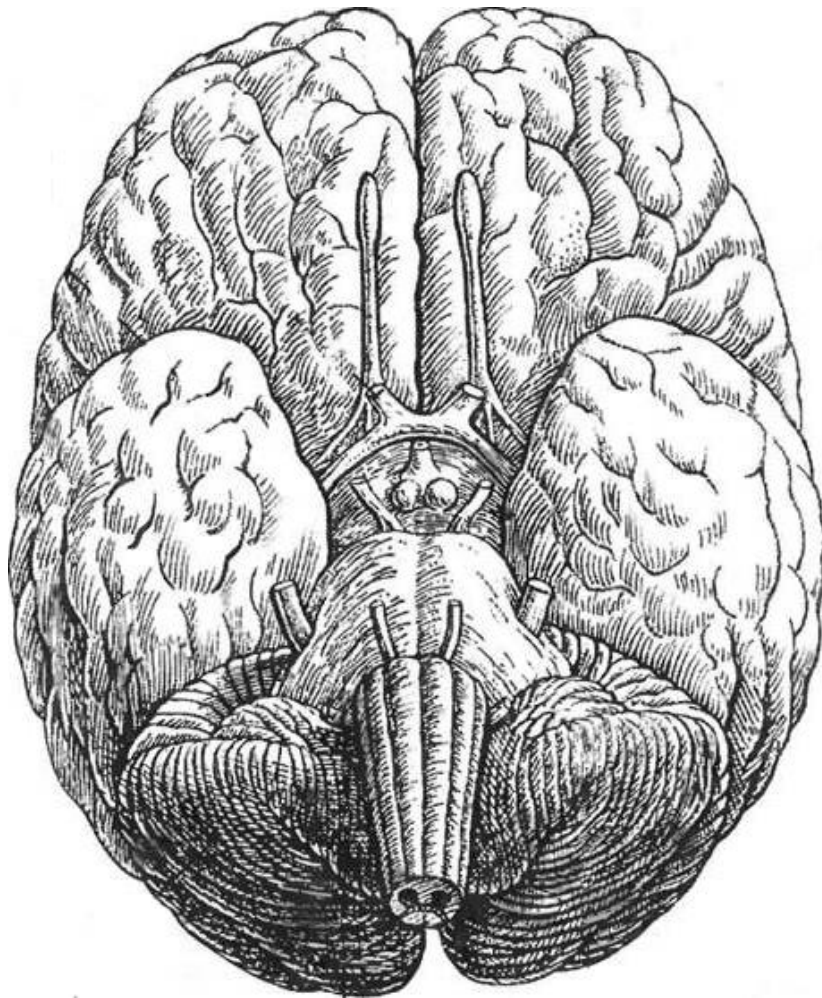
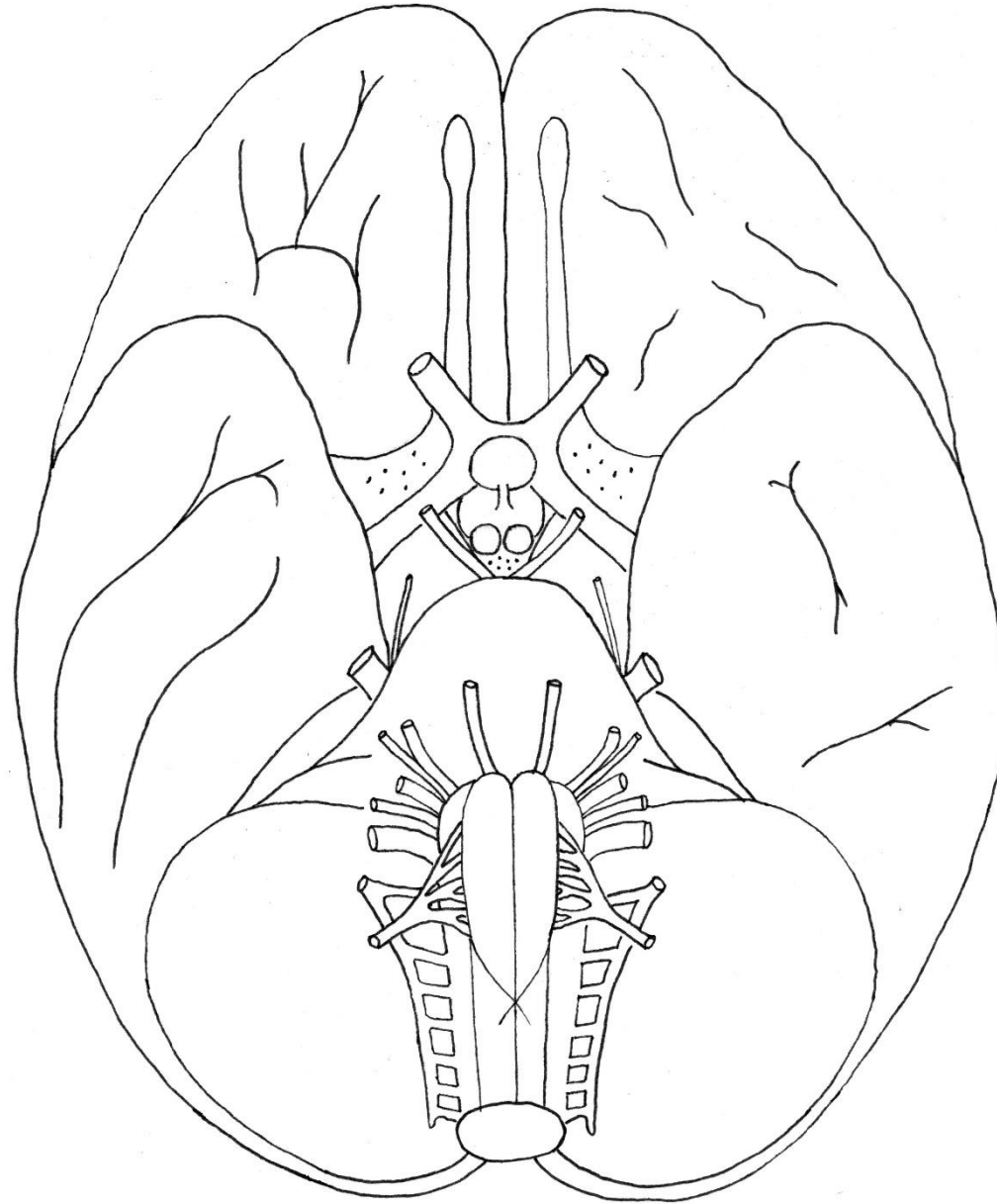


Using different colors indicate the parts of the brain (rhombencephalon (myelencephalon and metencephalon); mesencephalon; prosencephalon (diencephalon and telencephalon) on the diagrams of the base and sagittal section of the brain. Indicate the brain stem.



Indicate cranial nerves



Indicate the listed structures on the pictures

1. Olfactory bulb (bulbus olfactorius)
2. Olfactory tract (tractus olfactorius)
3. Olfactory trigone (trigonum olfactorium)
4. Optic chiasma (chiasma opticum)
5. Tuber cinereum (tuber cinereum)
6. infundibulum (infundibulum)
7. hypophysis (hypophysis)
8. mammillary bodies (corpora mamillaria)
9. anterior perforated substance (substantia perforata anterior)
10. cerebral peduncles (pedunculi crebri)
11. interpeduncular fossa (fossa interpduncularis)
12. posterior perforated substance (substantia perforata posterior)
13. pons (pons)
14. cerebellum (cerebellum): vermis and hemispheres
15. brain stem (truncus cerebri)
16. longitudinal cerebral fissure (fissura longitudinalis cerebri)
17. transverse cerebral fissure (fissura transversa cerebri)
18. corpus callosum (corpus callosum)
19. middle cerebral peduncles (pedunculi cerebellaris medii)
20. tectum (tectum mesencephali)
21. IV ventricle (ventriculus quartus)
22. Cerebral aqueduct (aqueductus cerebri)
23. Thalamus (thalamus)
24. Pineal body (corpus pineale)
25. Fornix (fornix)
26. Superior medullary velum (velum medullare superius)
27. Inferior medullary velum (velum medullare inferius)

