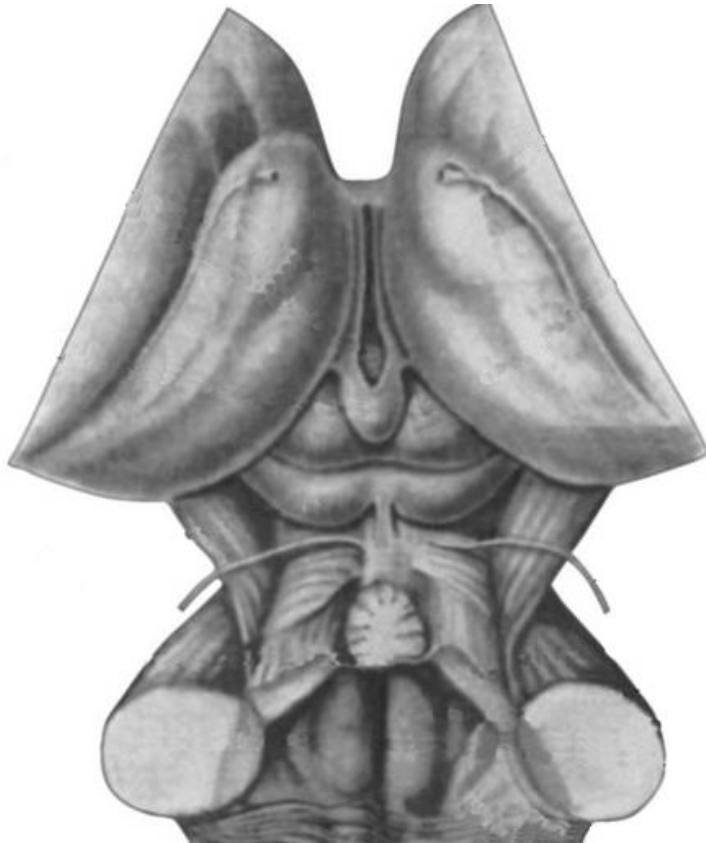
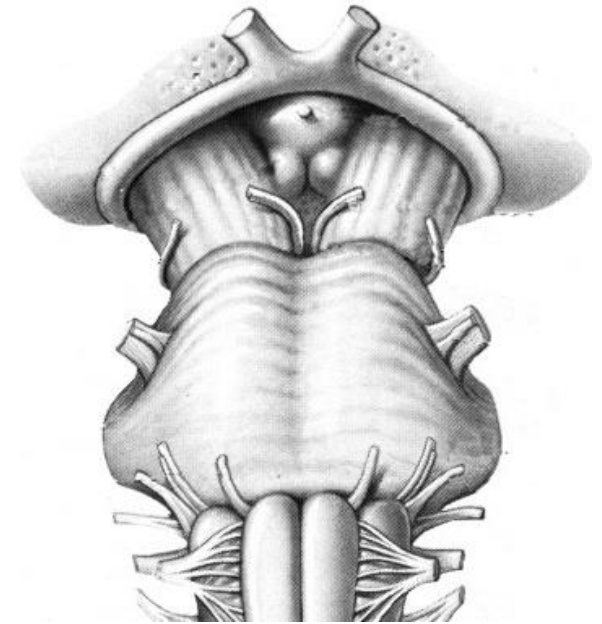


Task 1. Indicate the listed structures on the following pictures:



1. Cerebral peduncles, *pedunculi cerebri*;
2. Posterior perforated substance, *substantia perforata posterior*;
3. Lateral groove of mesencephalon, *sulcus lateralis mesencephali*;
4. Interpeduncular fossa, *fossa interpeduncularis*.
5. Quadrigeminal (tectal) plate, *lamina tecti*;
6. Cerebral aqueduct, *aqueductus mesencephali* (of Sylvius);
7. Oculomotor sulcus, *sulcus n. oculomotorii*;
8. Roots of oculomotor and trochlear nerves;
9. Superior colliculus, *colliculus superior*;
10. Inferior colliculus, *colliculus inferior*;
11. Brachia of the superior colliculi, *brachia colliculi superiores*;
12. Brachia of inferior colliculi, *brachia colliculi inferiores*;
13. Frenulum veli, *frenulum veli medullaris superioris*;
14. Trigone of lemnisci, *trigonum lemnisci*;



The dorsal surface of the pons, midbrain and diencephalon

