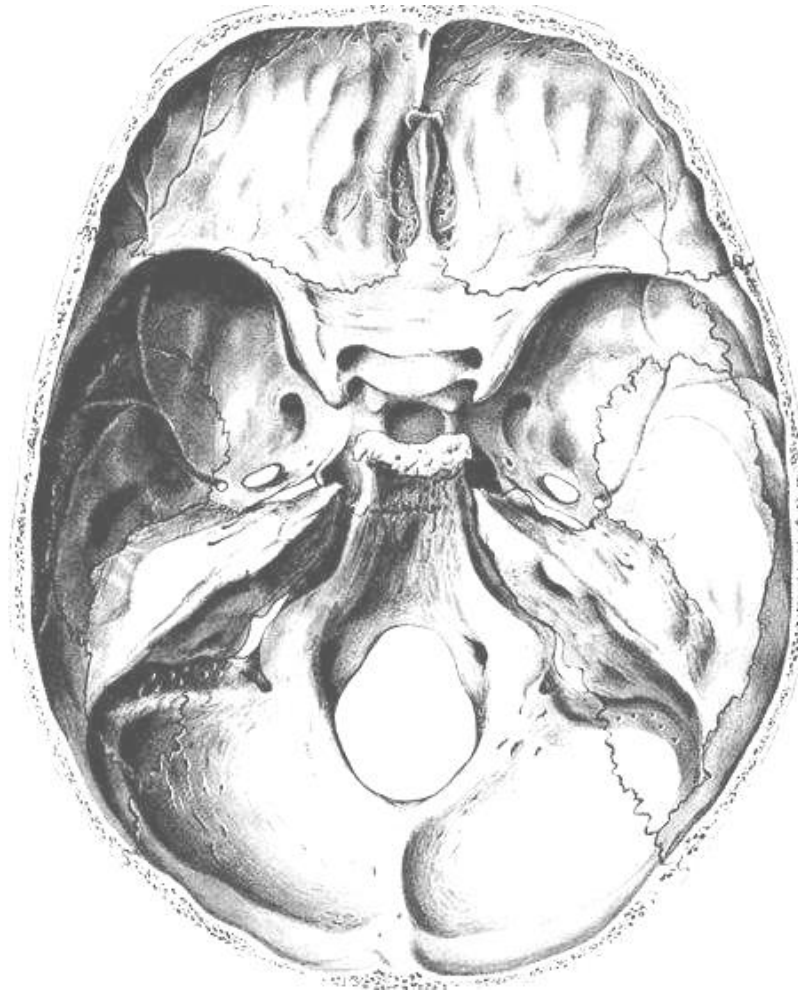
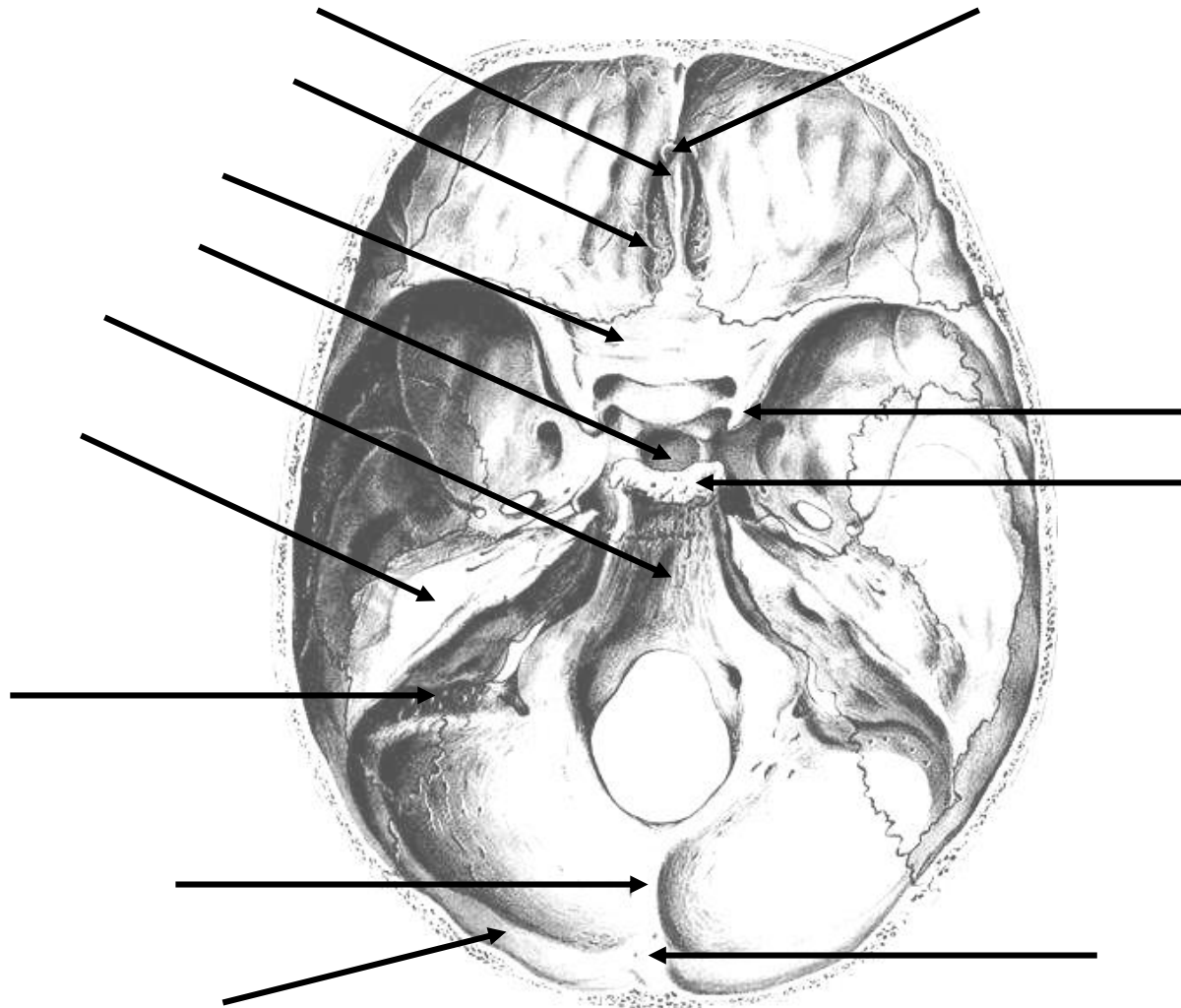


Skull as a Whole
(indicate the anterior, middle and posterior cranial fossae in different colors)



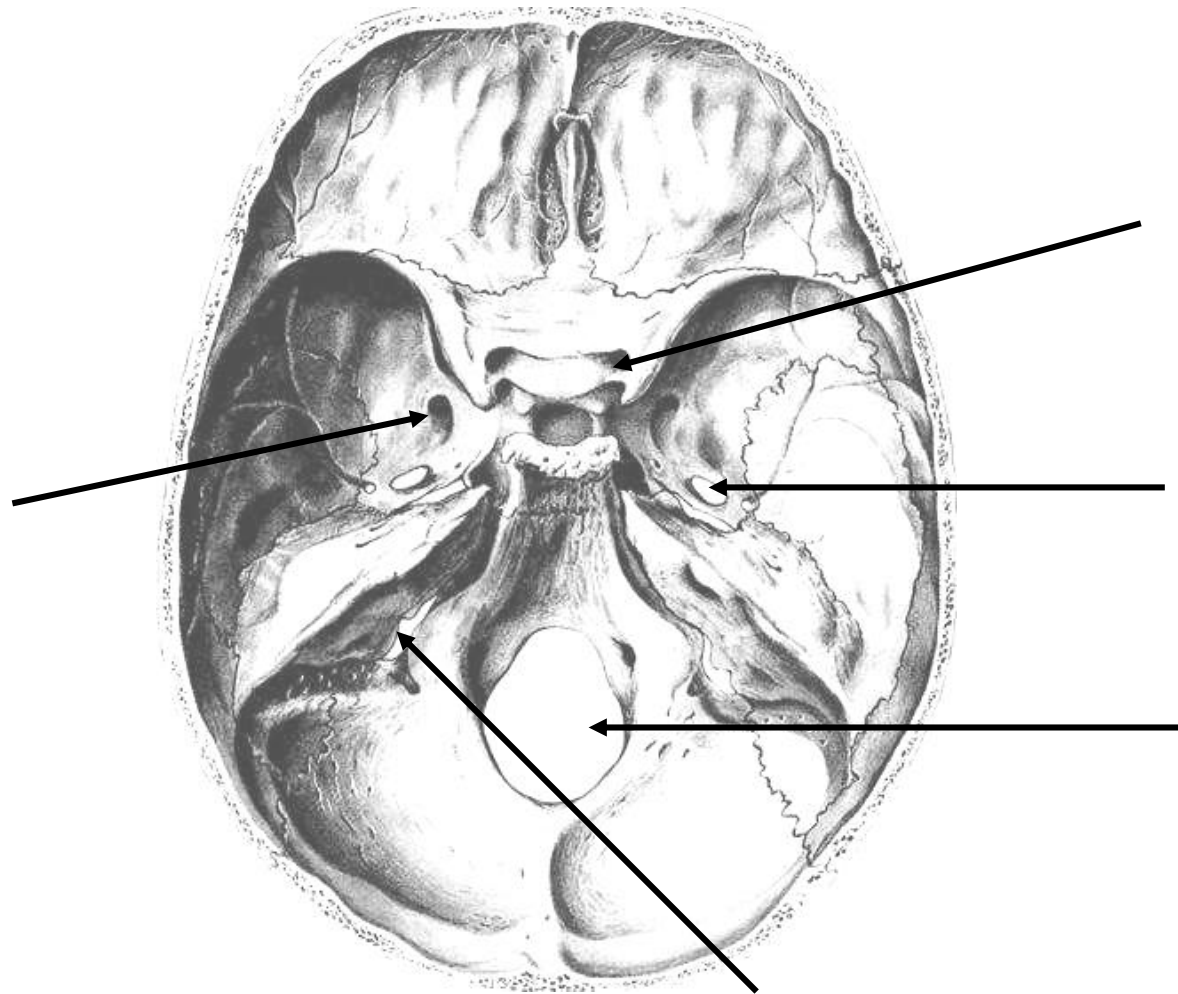
Skull
(internal base)

Skull as a Whole
(indicate the following structures)



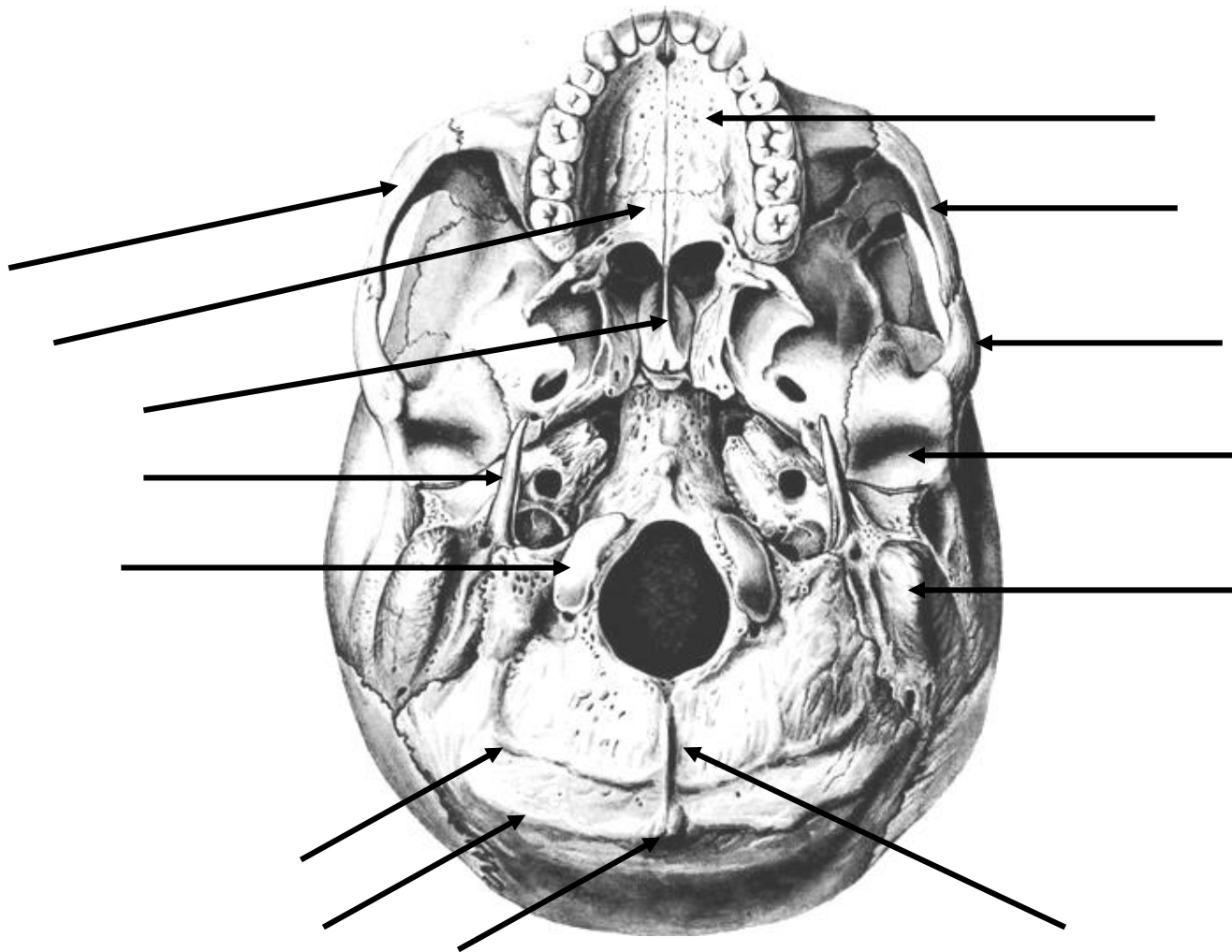
Skull
(internal base)

Skull as a Whole
(indicate the following openings)



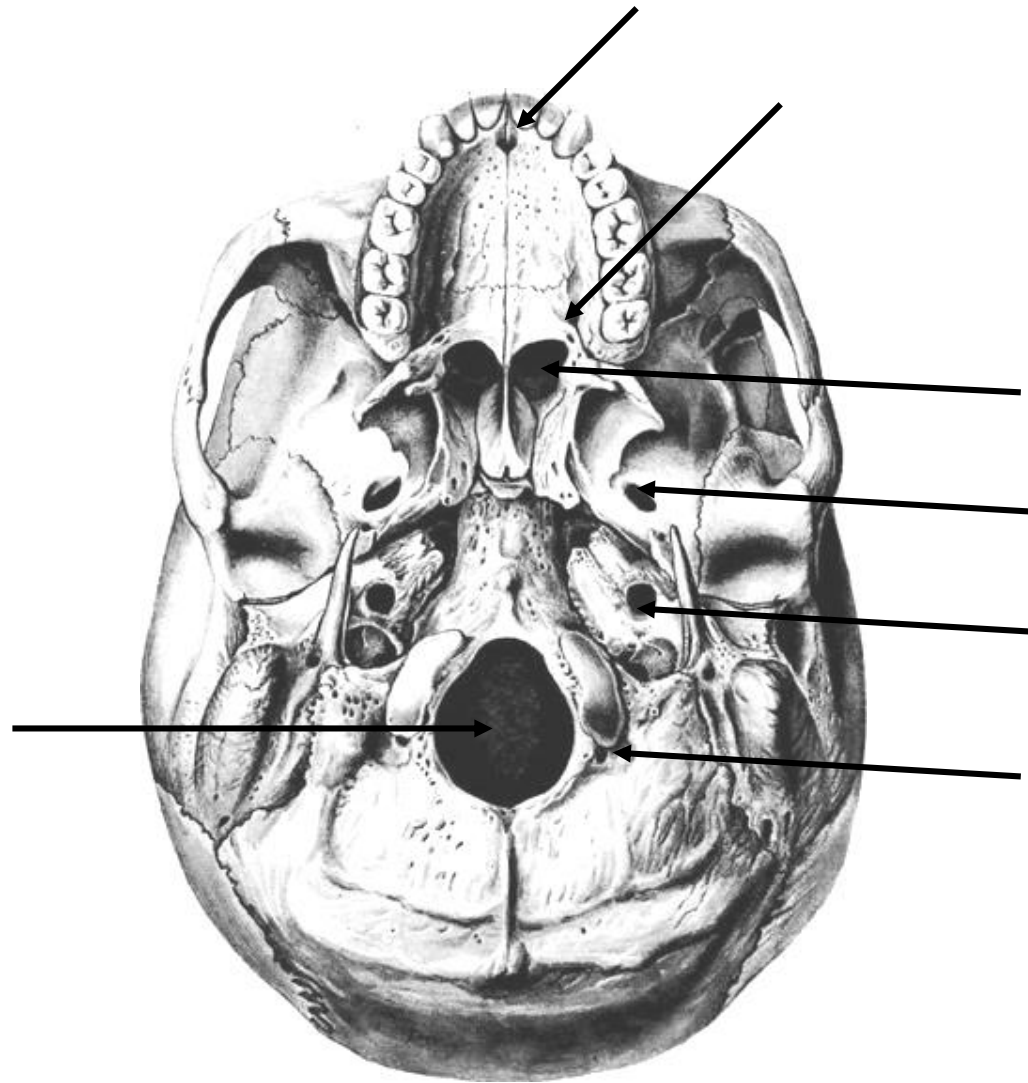
Skull
(internal base)

Skull as a Whole
(indicate the following structures)



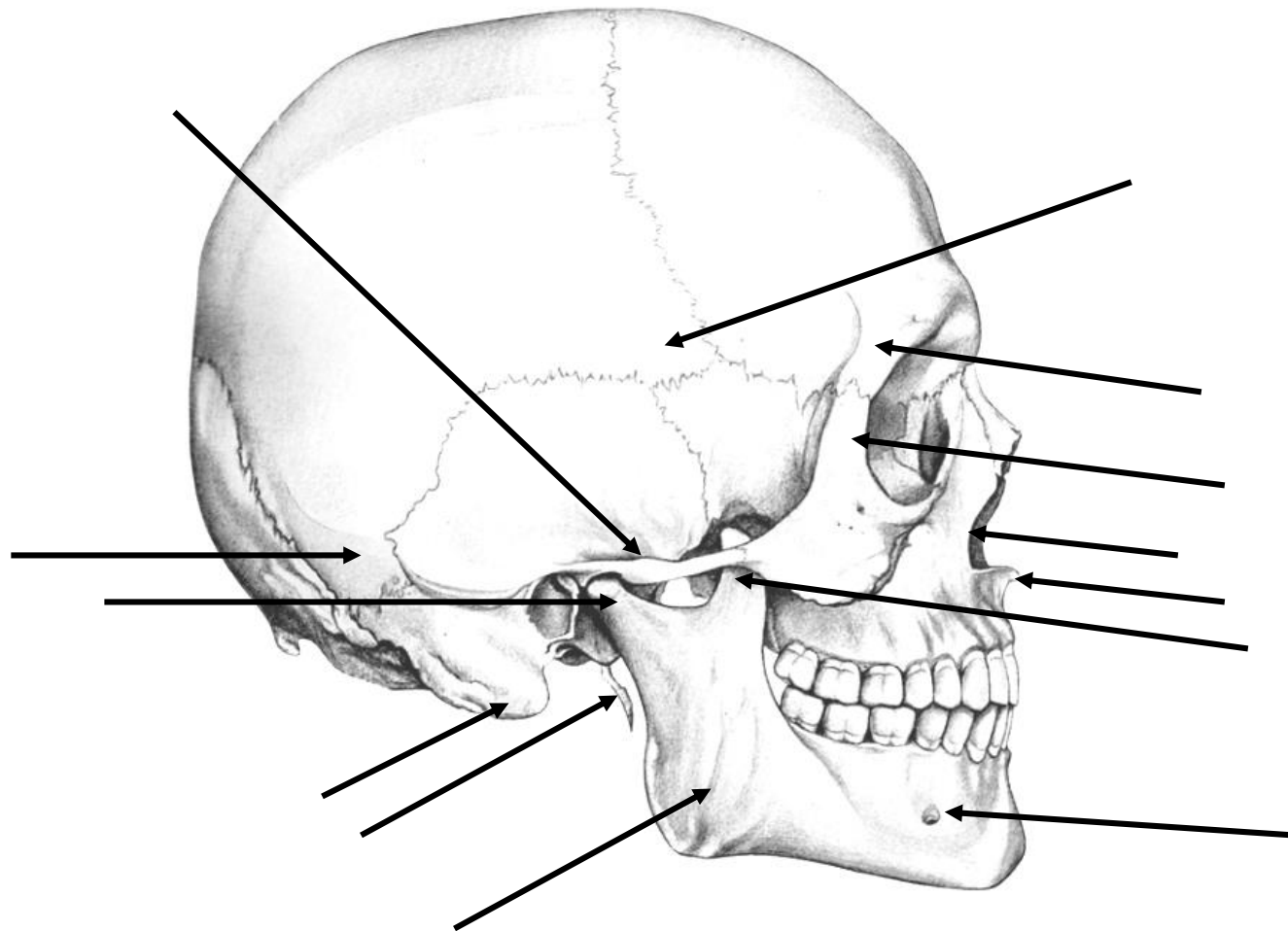
Skull
(external base)

Skull as a Whole
(indicate the following openings)



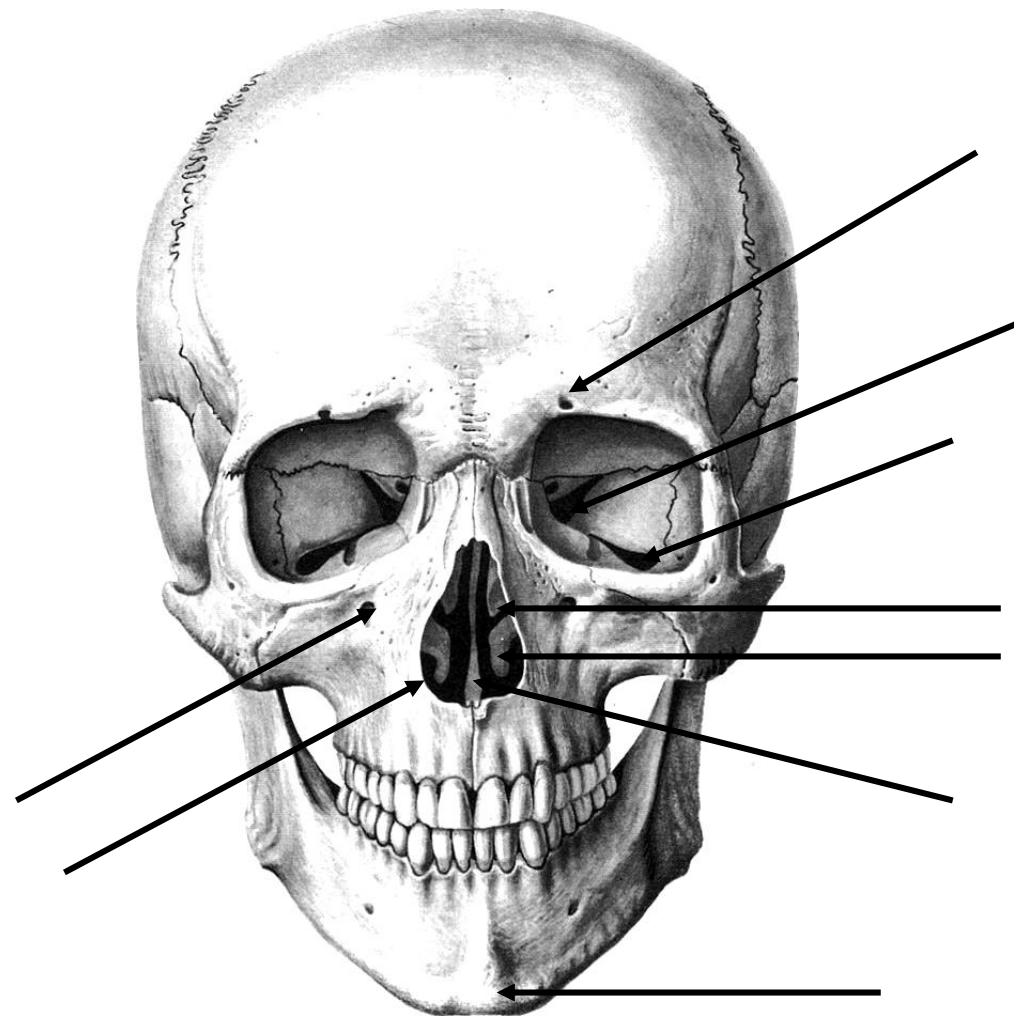
Skull
(external base)

Skull as a Whole
(indicate the following structures)



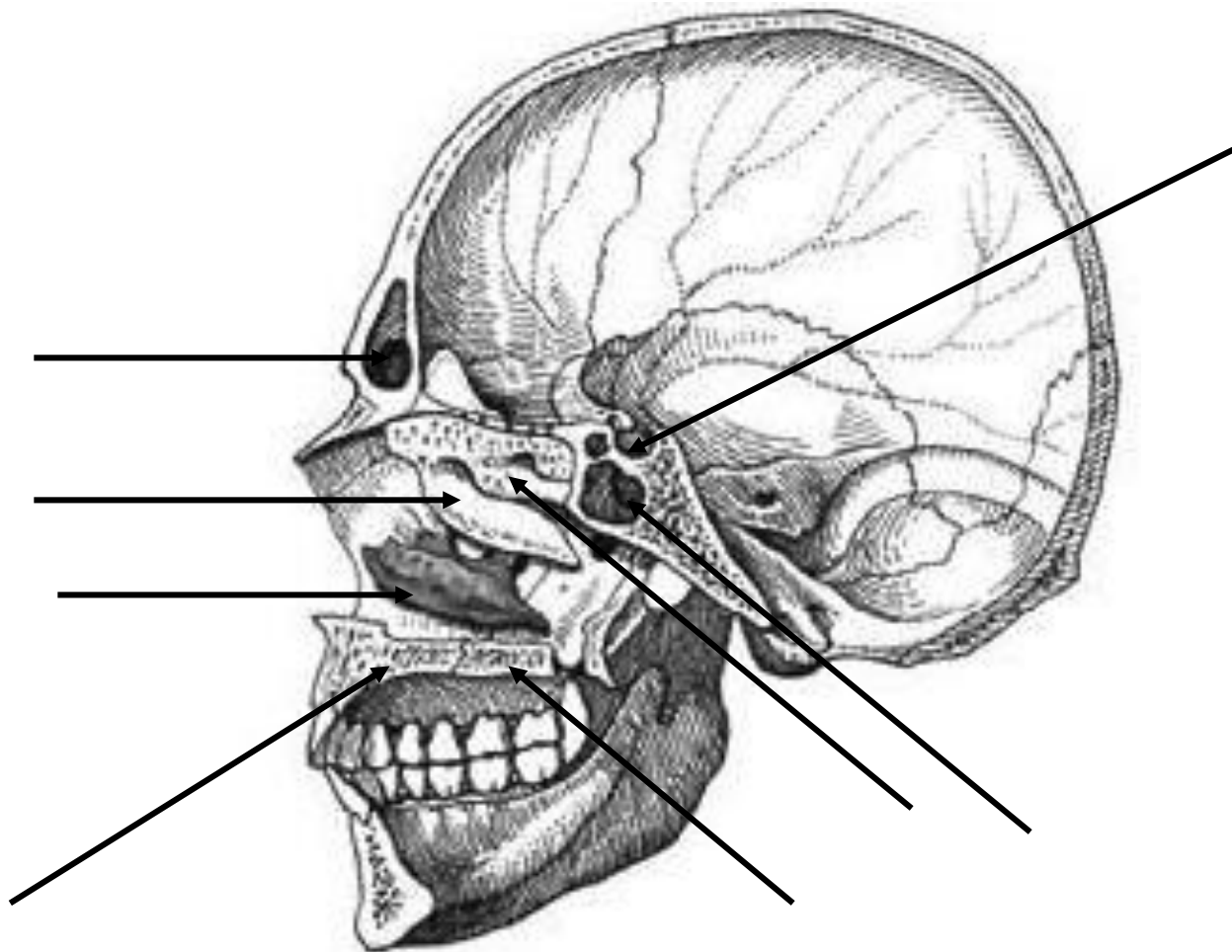
Skull
(lateral aspect)

Skull as a Whole
(indicate the following structures)



Skull
(anterior aspect)

Skull as a Whole
(indicate the following structures)



Skull
(sagittal section)

Skull as a Whole

(mark in different colors and indicate the visible skull bones which form the orbit's walls (inferior, superior, lateral, medial))



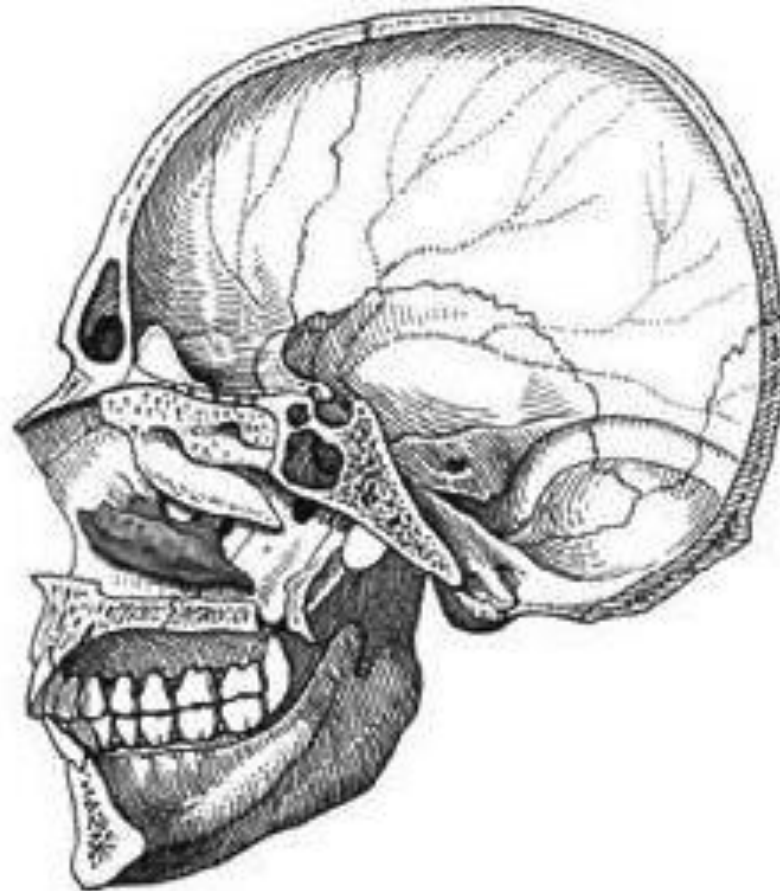
Orbit
(anterior aspect)



Orbit
(medial aspect)

Skull as a Whole

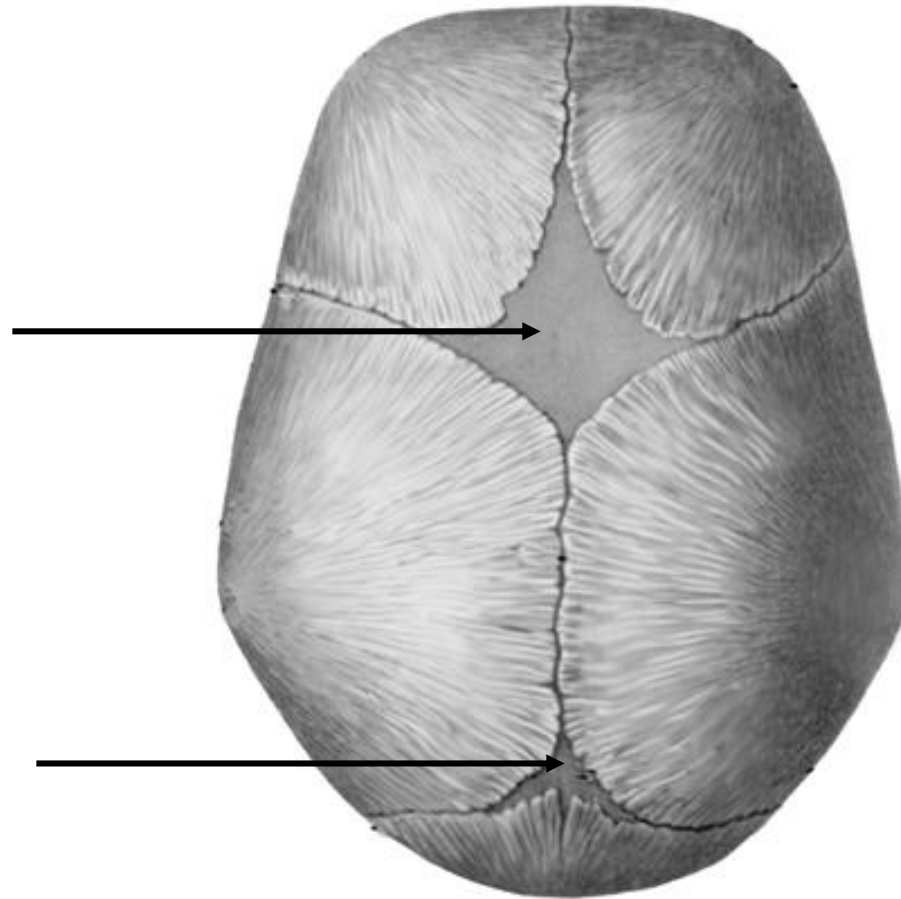
(mark in different colors and indicate the visible skull bones which form the lateral wall of the nasal cavity)



Skull

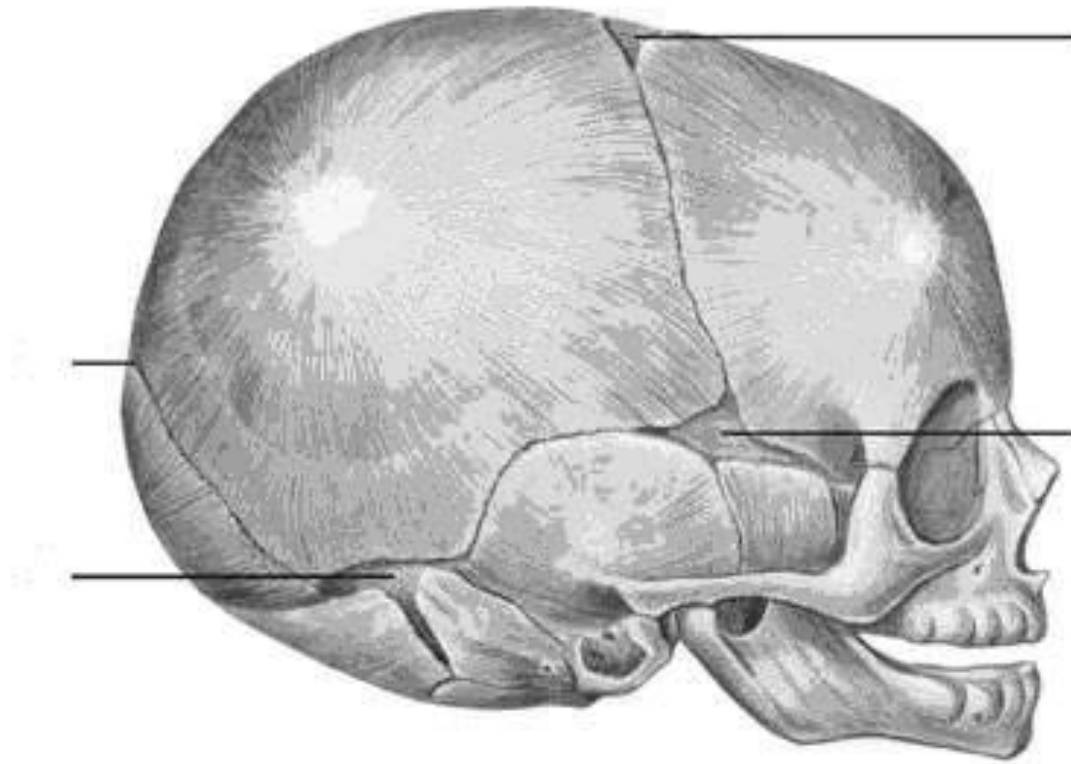
(sagittal section)

Skull as a Whole
(indicate the following fontanelles)



Skull of newborn
(superior aspect)

Skull as a Whole
(indicate the following fontanelles)



Skull of newborn
(lateral aspect)