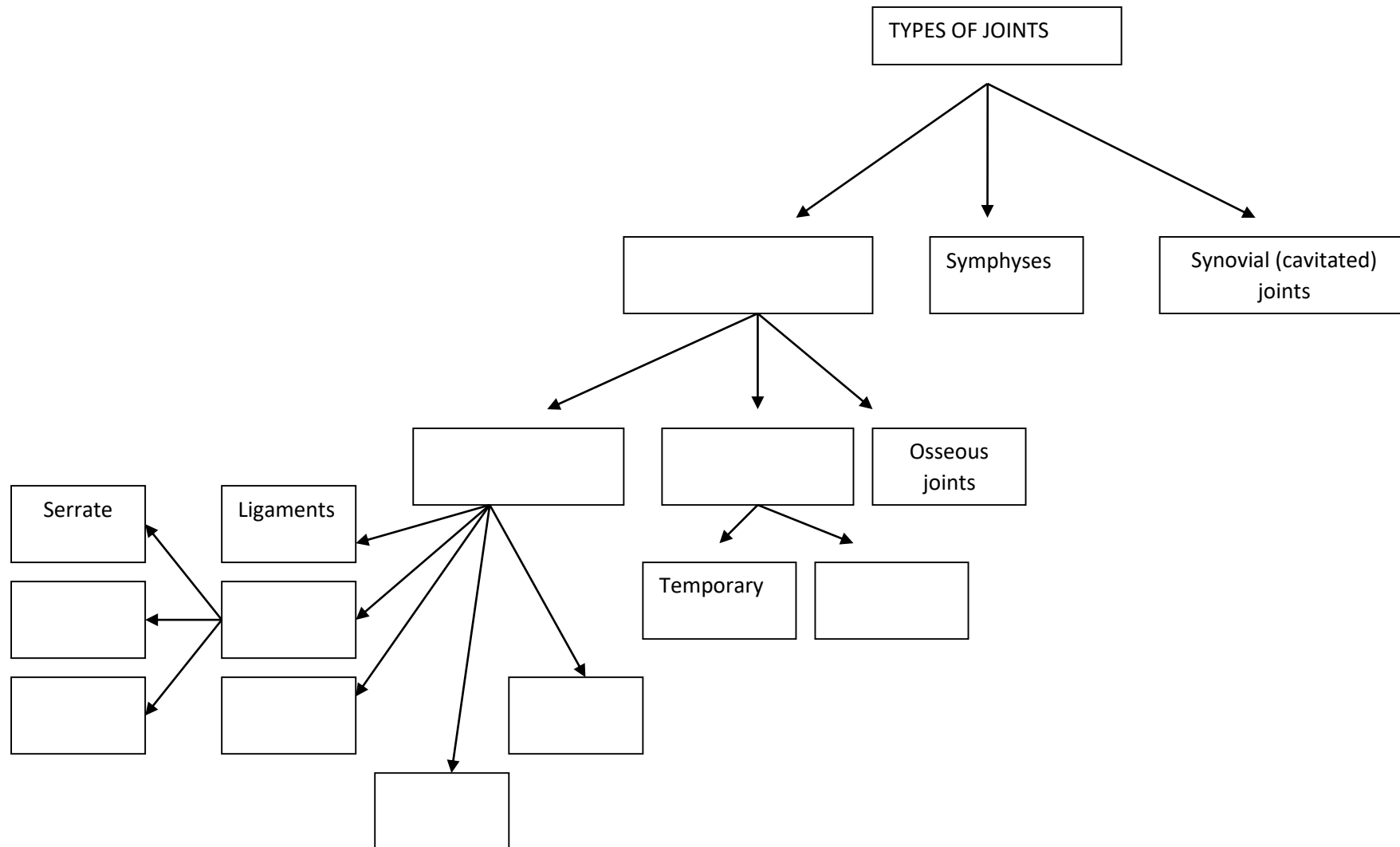


## SELFTESTS: GENERAL ARTHROSYNDESMOLOGY

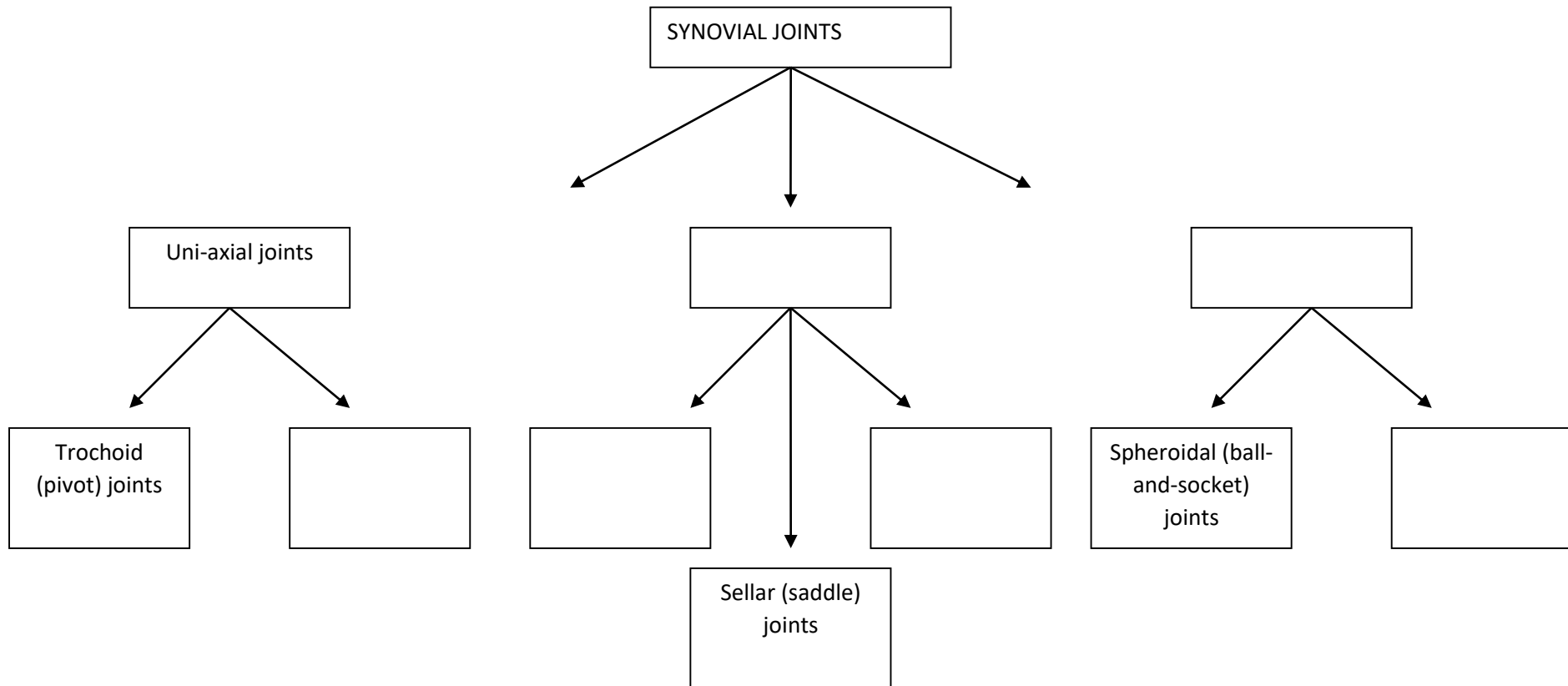
**Task 1: Complete the table.**

## CLASSIFICATION OF JOINTS



**Task 2: Complete the table.**

**CLASSIFICATION OF SYNOVIAL JOINTS BASED ON AXES OF MOVEMENTS AND SHAPE OF ARTICULAR SURFACES**



**Task 3: What types of joints do the cochlear and cotyloid joints belong to? Write these joint into the corresponding fields.**