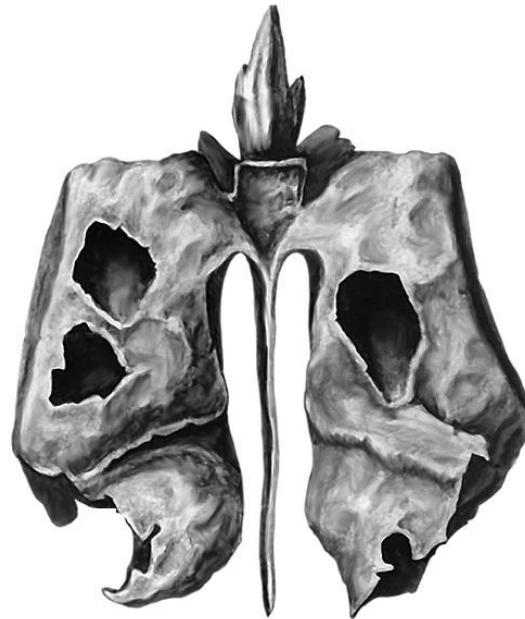


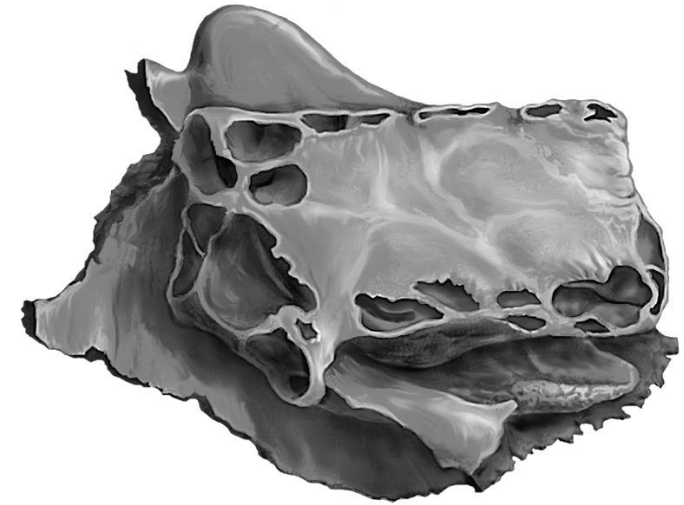
Ethmoid Bone

(indicate the listed structures on the following pictures)

1. ethmoidal labyrinths, *labyrinthi ethmoidales*;
2. cribriform plate, *lamina cribrosa*;
3. perpendicular plate, *lamina perpendicularis*;
4. ethmoidal cells, *cellulae ethmoidales*;
5. orbital plate, *lamina orbitalis*;
6. middle nasal concha, *concha nasalis media*;
7. crista galli, *crista galli*



Ethmoid bone
(posterior aspect)



Ethmoid bone
(left side)

Sphenoid Bone

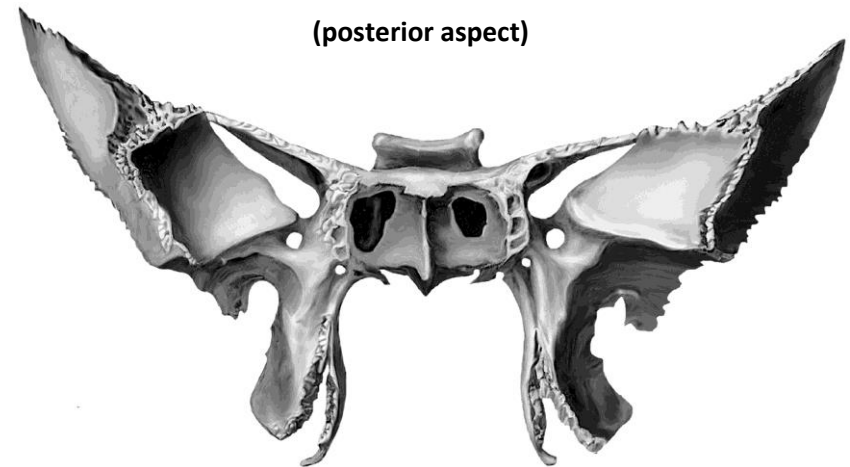
(indicate the listed structures on the following pictures)

1. body of shpenoid, *corpus ossis sphenoidalis*;
2. sella turcica, *sella turcica*;
3. hypophisial fossa, *fossa hypophysialis*;
4. dorsum sellae, *dorsum sellae*;
5. tuberculum sellae, *tuberculum sellae*;
6. posterior clinoid process, *processus clinoideus posterior*;
7. prechiasmatic sulcus, *sulcus prechiasmaticus*;
8. carotid sulcus, *sulcus caroticus*;
9. sphenoidal crest, *crista sphenoidalis*;
10. opening of sphenoidal sinus, *apertura sinus sphenoidalis*;
11. lesser wing, *ala minor*;
12. optic canal, *canalis opticus*;
13. greater wing, *ala major*;
14. foramen rotundum, *foramen rotundum*;
15. foramen spinosum, *foramen spinosum*;
16. superior orbital fissure, *fissura orbitalis superior*;
17. infratemporal crest, *crista infratemporalis*;
18. medial plate of pterygoid process, *lamina medialis*;
19. lateral plate of pterygoid process, *lamina lateralis*;
20. pterygoid fossa, *fossa pterygoidea*;
21. scaphoid fossa, *fossa scaphoidea*;
22. pterygoid hamulus, *hamulus pterygoideus*;



Sphenoid bone

(posterior aspect)



Sphenoid bone

(anterior aspect)

