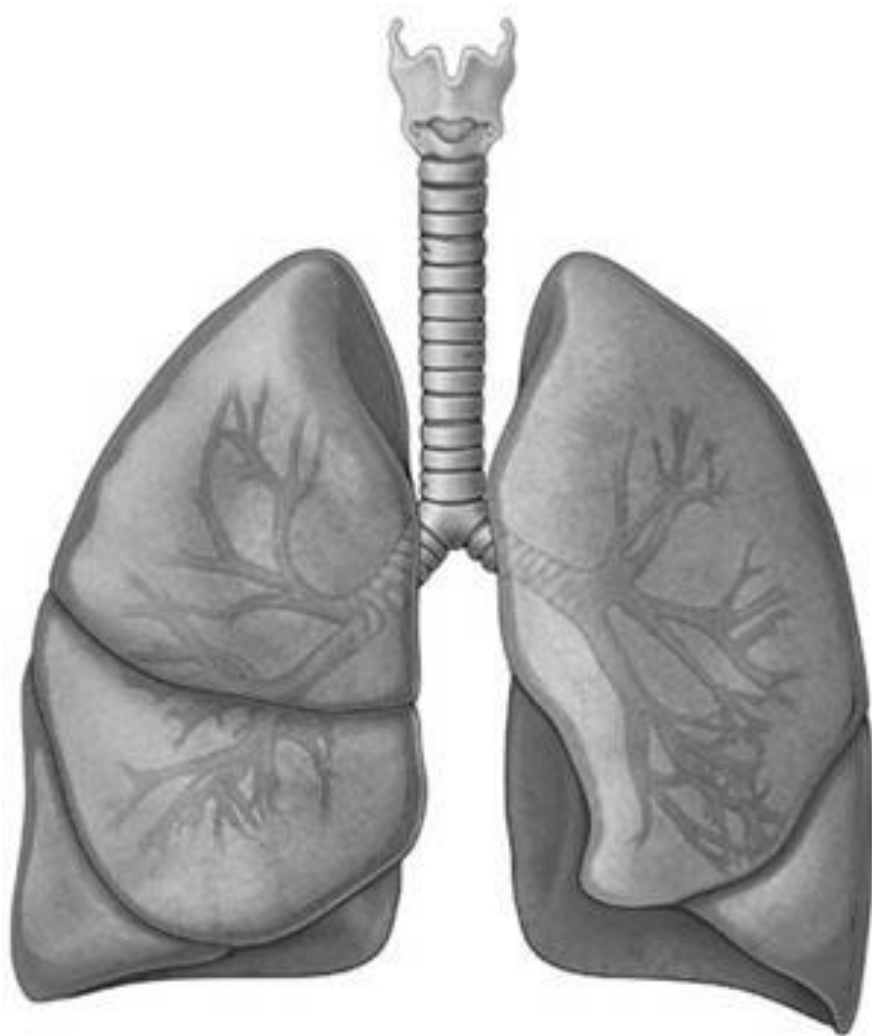


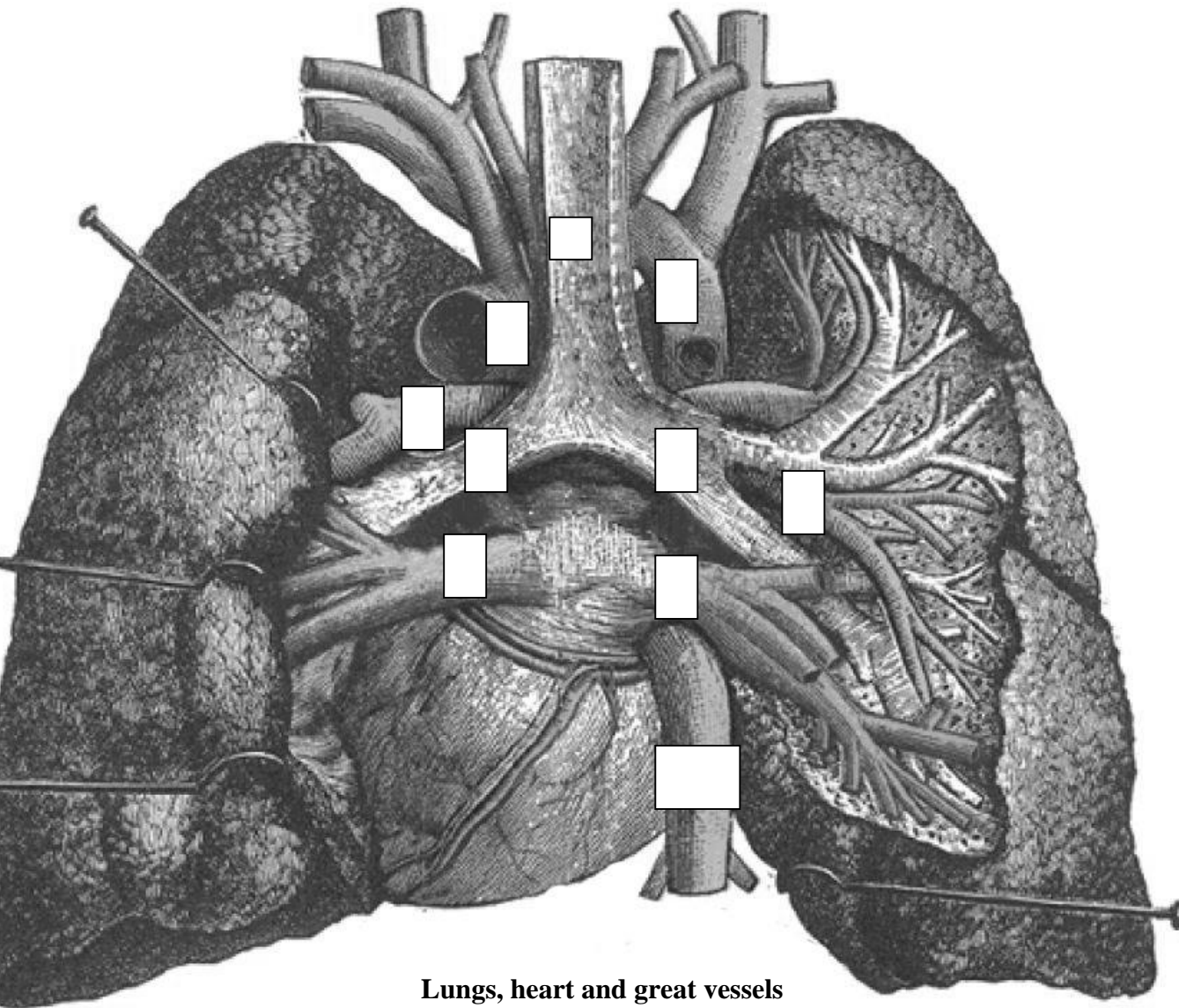
Task 10: Indicate the listed structures on the following picture.



**Trachea and lungs
(anterior aspect)**

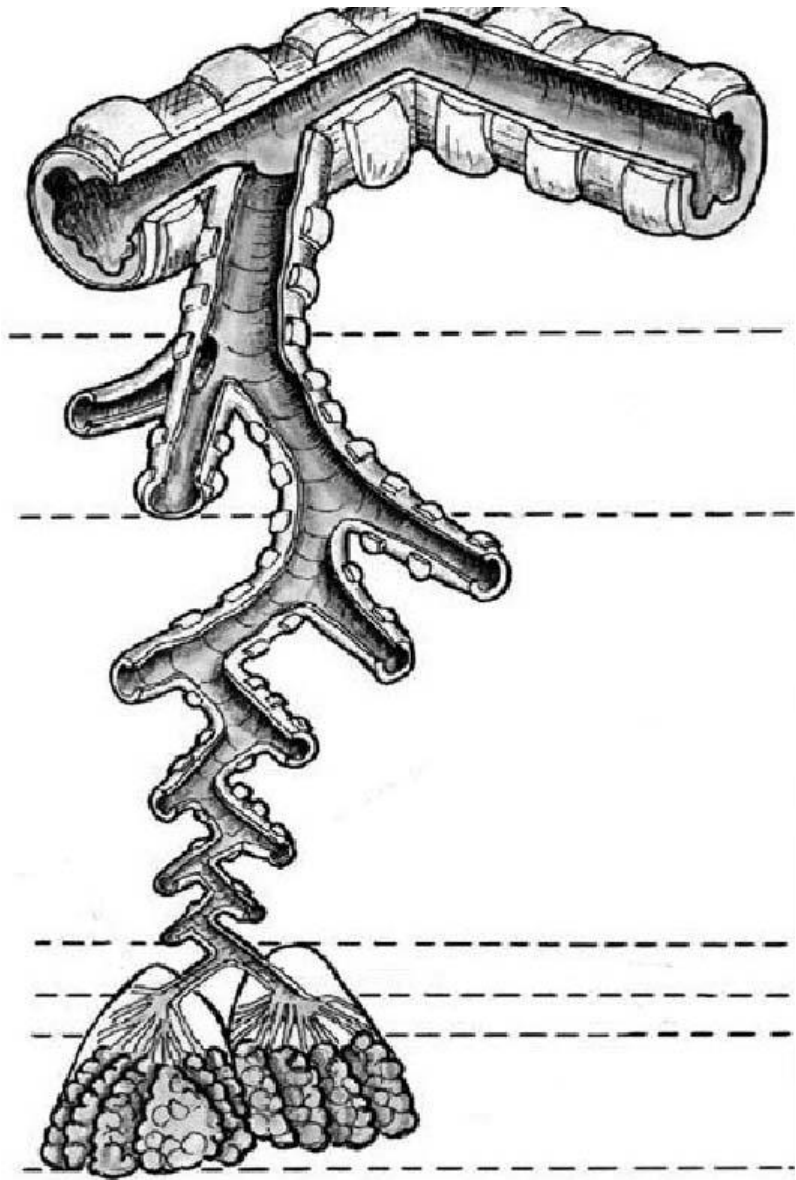
1. Tracheal cartilages (cartilagine tracheales);
2. Annular ligaments (ligamenta anularia tracheae);
3. Tracheal bifurcation (bifurcatio tracheae);
4. Right principal bronchus (bronchus principalis dexter);
5. Left principal bronchus (bronchus principalis sinister);
6. Lobar bronchi (bronchi lobares);
7. Segmental bronchi (bronchi segmentales);
8. Base of lung (basis pulmonis);
9. Apex of lung (apex pulmonis);
10. Costal surface of lung (facies costalis pulmonis);
11. Mediastinal surface of lung (facies mediastinalis pulmonis);
12. Diaphragmatic surface of lung (facies diaphragmatica pulmonis);
13. Anterior border of lung (margo anterior pulmonis);
14. Inferior border of lung (margo inferior pulmonis);
15. Cardiac impression (impressio cardiaca);
16. Cardiac notch (incisura cardiaca);
17. Hilum of lung (hilum pulmonis);
18. Lingula of left lung (lingula pulmonis sinistri);
19. Oblique fissure (fissura obliqua);
20. Horizontal fissure (fissura horizontalis)
21. Superior lobe of lungs (lobus superior pulmonis);
22. Inferior lobe of lungs (lobus inferior pulmonis);
23. Middle lobe of right lung (lobus medius pulmonis dextri);

Task 11: Write the names of the structures, indicated by the numbers on the following picture. Write sequentially (from the top down) the components of the roots of the right and of the left lung.

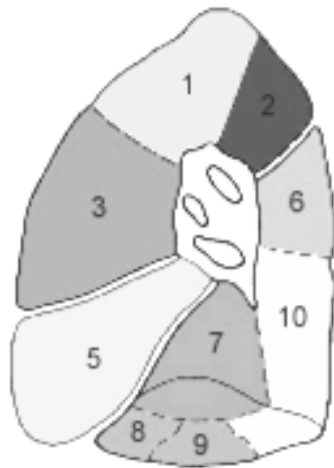


**Lungs, heart and great vessels
(posterior aspect)**

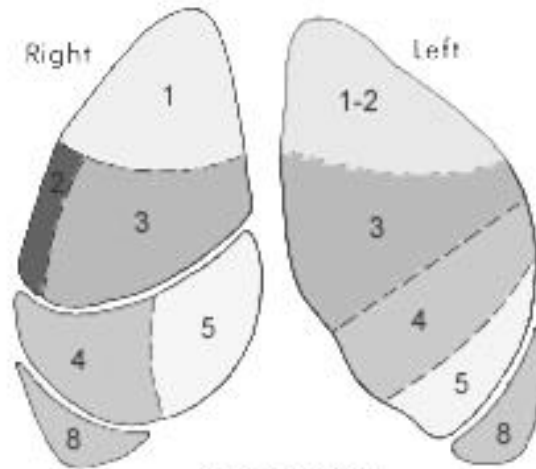
Task 12: Write the subdivisions of the bronchi in sequence. Mark the bronchial tree and alveolar tree (acinus), and write their components.



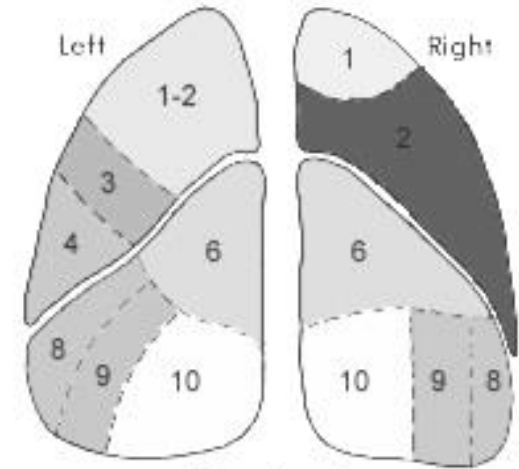
Task 13: Write the names of the segments of the lungs.



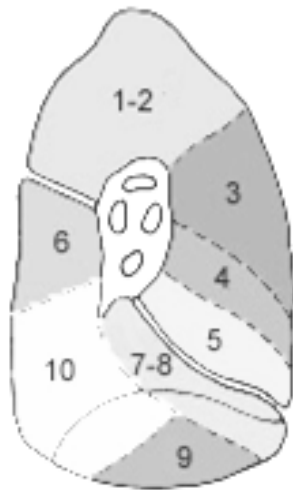
Right medial view



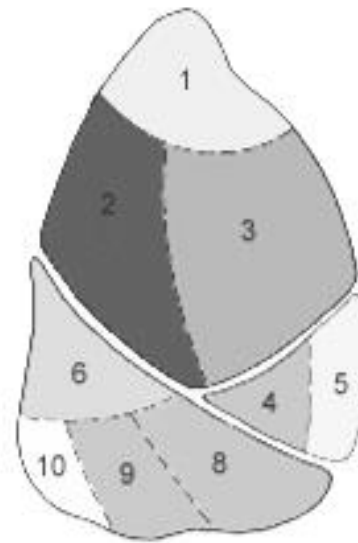
Anterior view



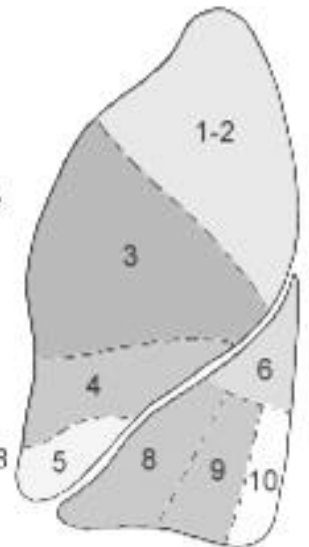
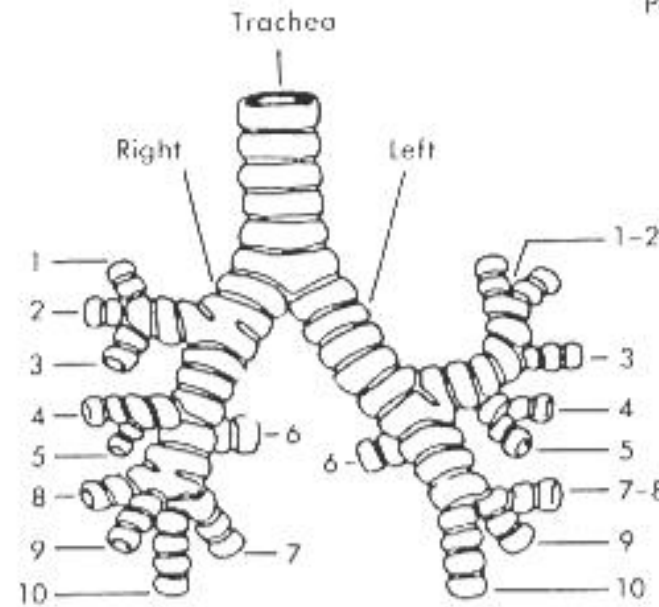
Posterior view



Left medial view

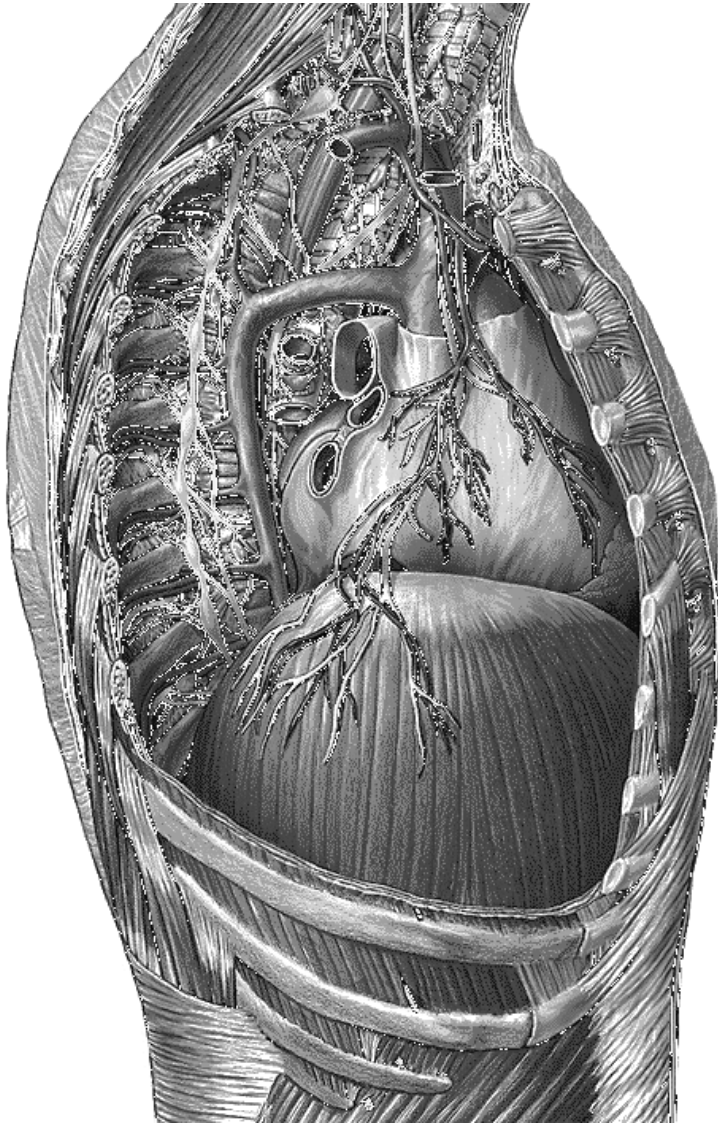


Right lateral view



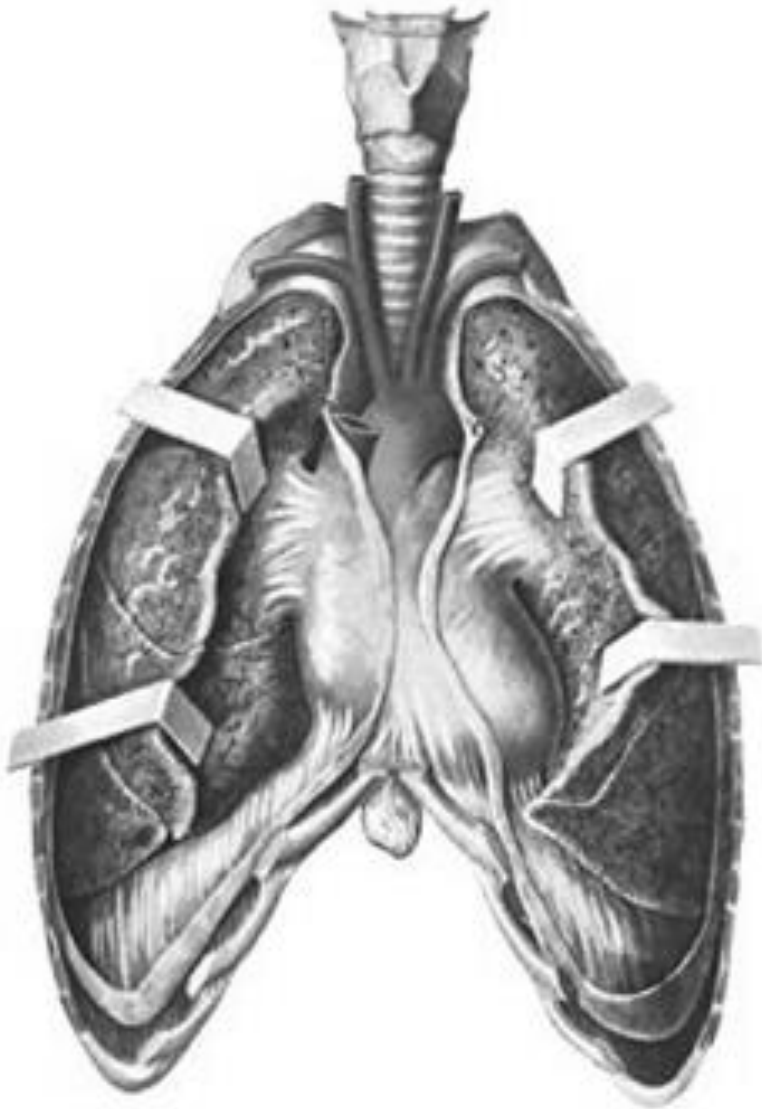
Left lateral view

Task 14: Draw the lines to divide the mediastinum into anterior and posterior and into superior and inferior. Indicate and write the organs of each part of the mediastinum.



**Mediastinum
(sagittal aspect)**

Task 15: Indicate the listed structures on the following picture.

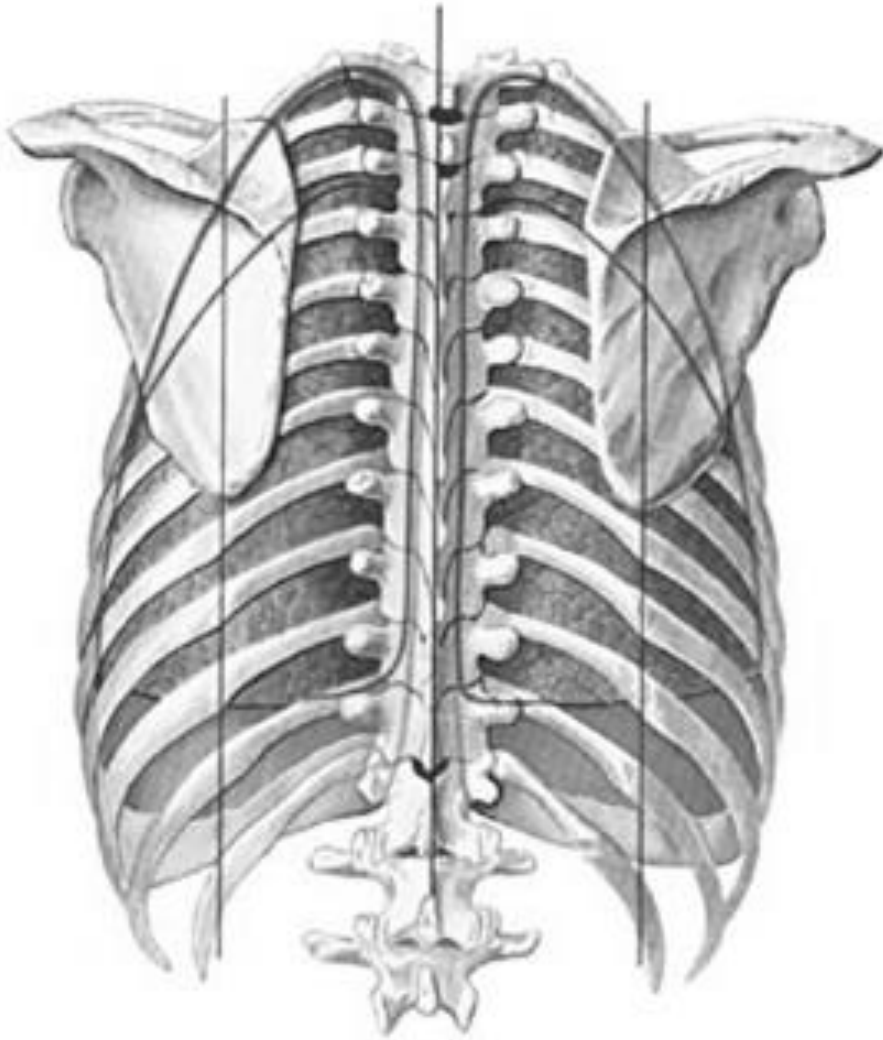


1. Parietal pleura (pleura parietalis);
2. Visceral pleura (pleura visceralis);
3. Pleural cavity (cavitas pleuralis);
4. Diaphragmatic part of parietal pleura (pars diaphragmatica);
5. Costal part of parietal pleura (pars costalis);
6. Mediastinal part of parietal pleura (pars mediastinalis);
7. Pleural cupula (cupula pleurae);
8. Costodiaphragmatic recess (recessus costodiaphragmaticus);
9. Superior and inferior interpleural areas (area interpleurica superior et inferior);
10. Mediastinum (mediastinum)

**Organs of thoracic cavity
(anterior aspect)**

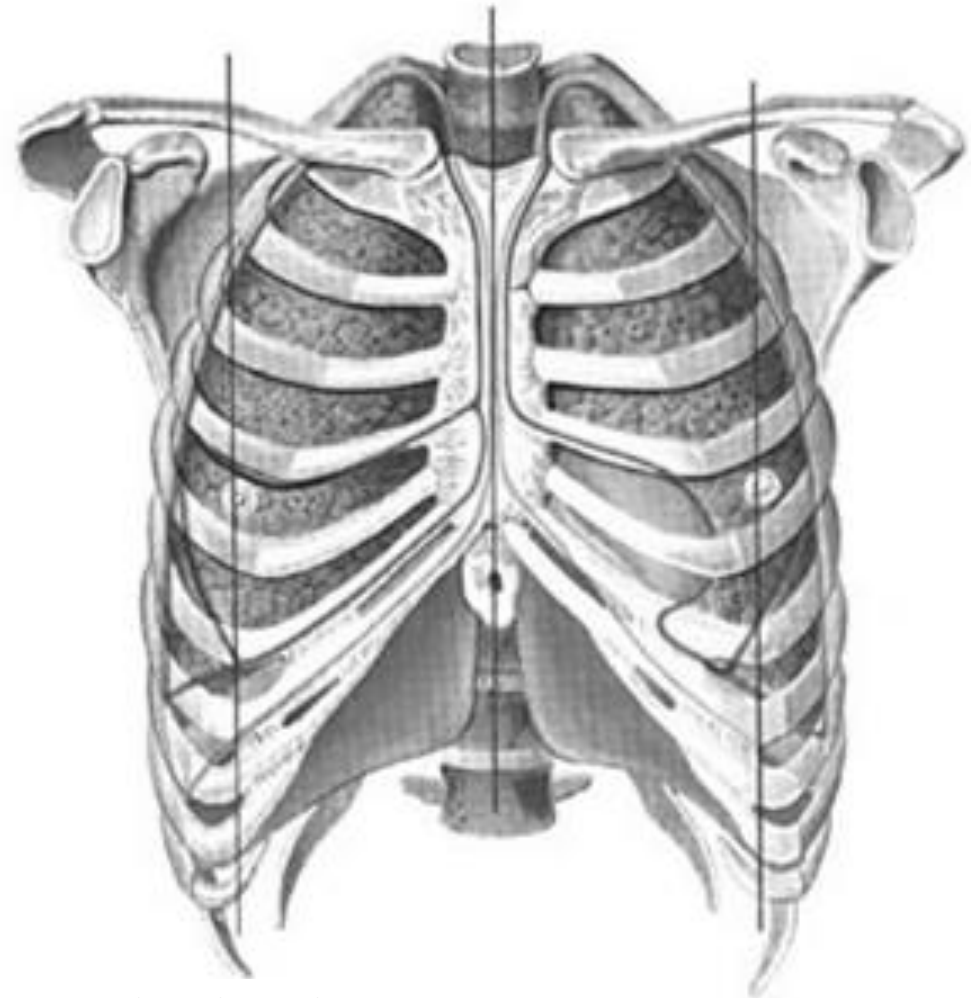
Task 16: Continue to draw the topographical lines of thorax, write the numbers of the ribs and mark the anterior, posterior and inferior borders of the lungs and parietal pleura.

Posterior median line



Scapular line

Anterior median line



Midclavicular line

