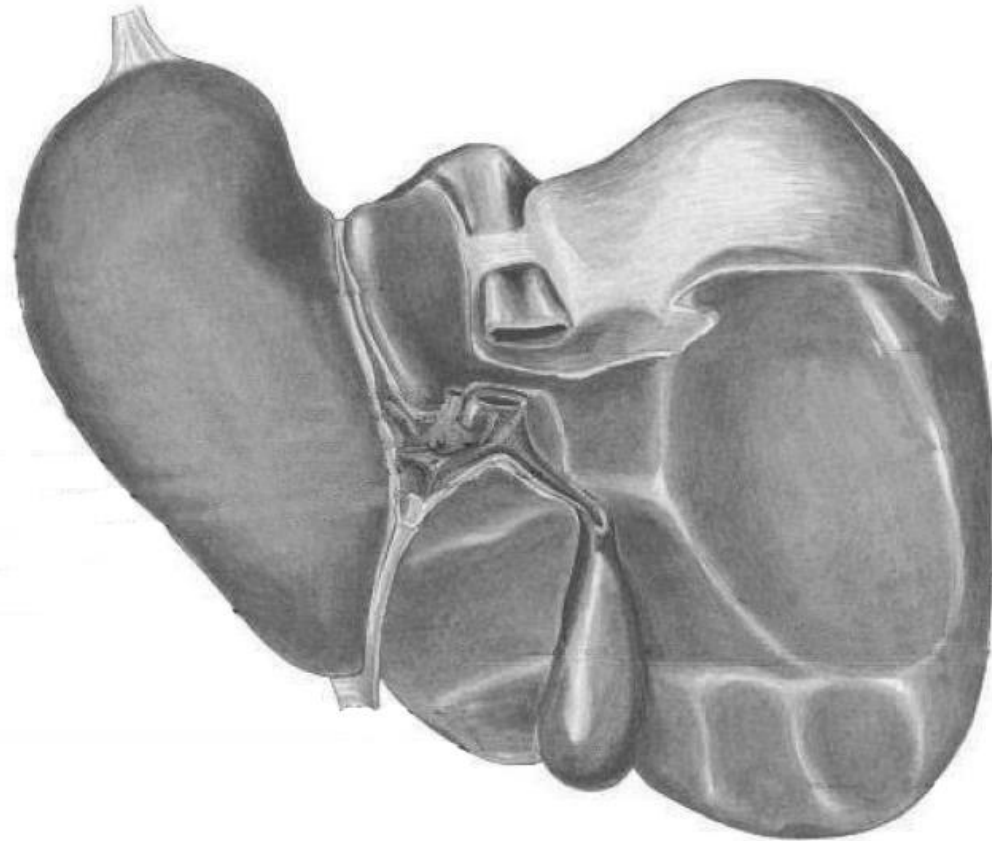
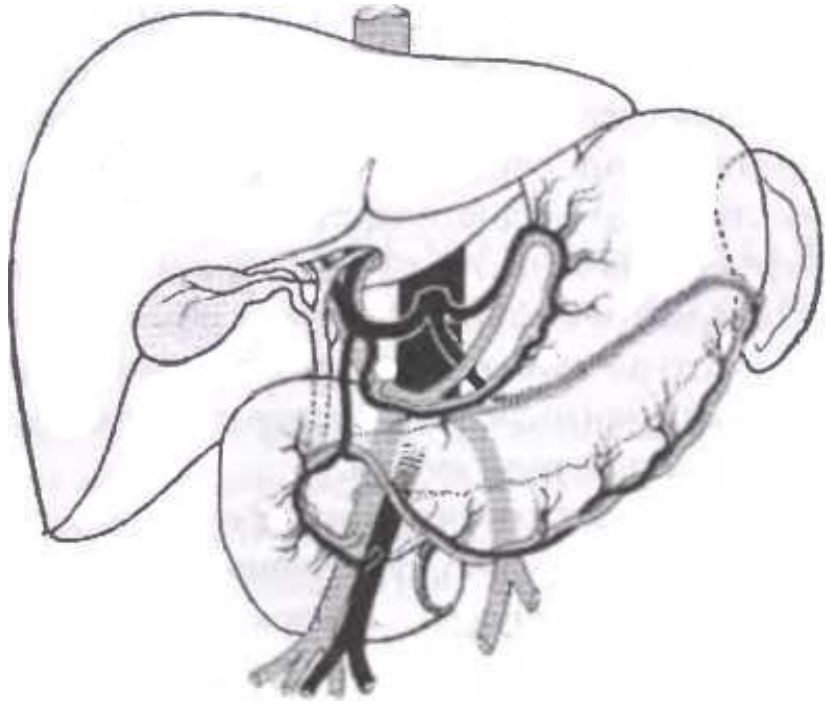


**Task 23: Indicate the listed structures on the following pictures.**

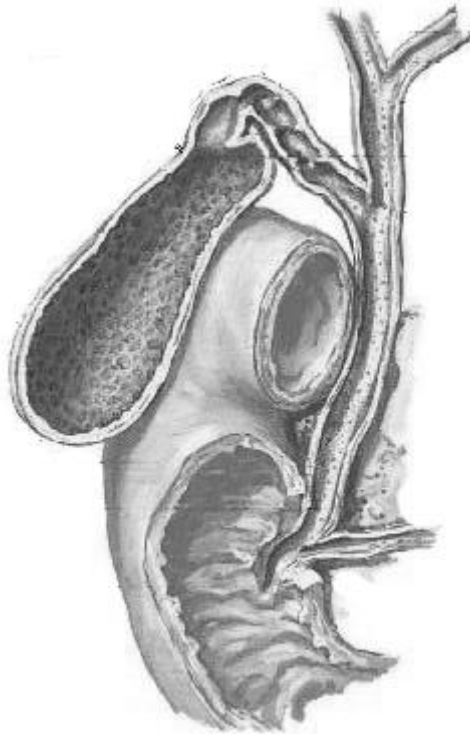
1. Ampulla (bulb) of the duodenum (ampulla duodeni)
2. Superior, descending, horizontal and ascending parts of the duodenum
3. Circular folds of duodenum (plicae circulares duodeni)
4. Longitudinal fold of duodenum (plica longitudinalis duodeni)
5. Major papilla of duodenum (papilla duodeni major)
6. Right lobe of the liver (lobus dexter)
7. Left lobe of the liver (lobus sinister)
8. Right and left longitudinal grooves (sulcus longitudinalis dexter et sinister)
9. Fissure for ligamentum venosum (fissura ligamenti venosi)
10. Fissure for ligamentum teres (fissura ligamenti teretis)
11. Fossa for gall bladder (fossa vesicae biliaris)
12. Vesical notch (incisura vesicalis)
13. Notch for the ligamentum teres (incisura ligamenti teretis)
14. Ligamentum teres (ligamentum teres hepatis)
15. Ligamentum venosum (ligamentum venosum)
16. Gall bladder (vesica fellea): fundus, body, neck
17. Cystic duct (ductus cysticus)
18. Fundus of the gall bladder (fundus vesicae felleae)
19. Common bile duct (ductus choledochus)
20. Common hepatic duct (ductus hepaticus communis)
21. Quadrate lobe (lobus quadratus)
22. Caudate lobe (lobus caudatus)
23. Papillary process (processus papillaris)
24. Groove for the vena cava (sulcus venae cavae)
25. Porta hepatis (porta hepatis)
26. Portal vein (vena portae)
27. Proper hepatic artery (arteria hepatica propria)



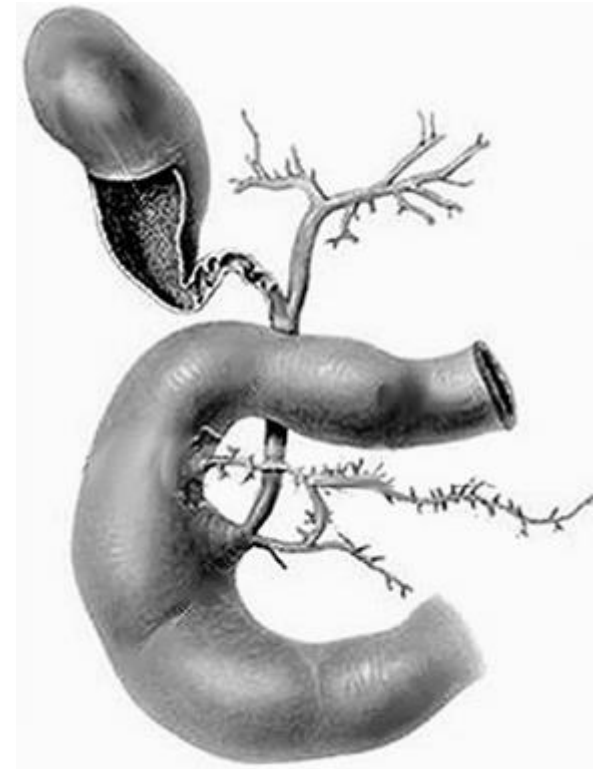
**Visceral surface of liver**



**Organs of epigastrium  
(anterior aspect)**

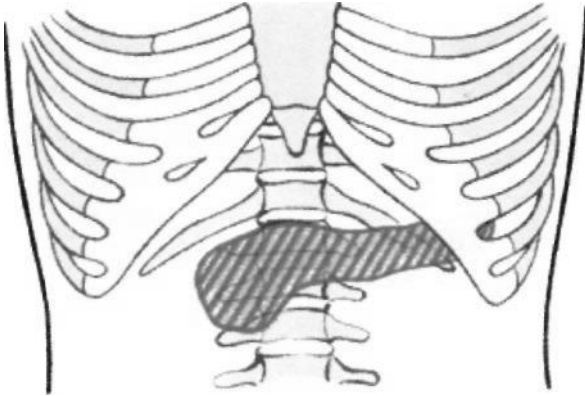


**Dissected gall bladder  
and duodenum  
(anterior aspect)**

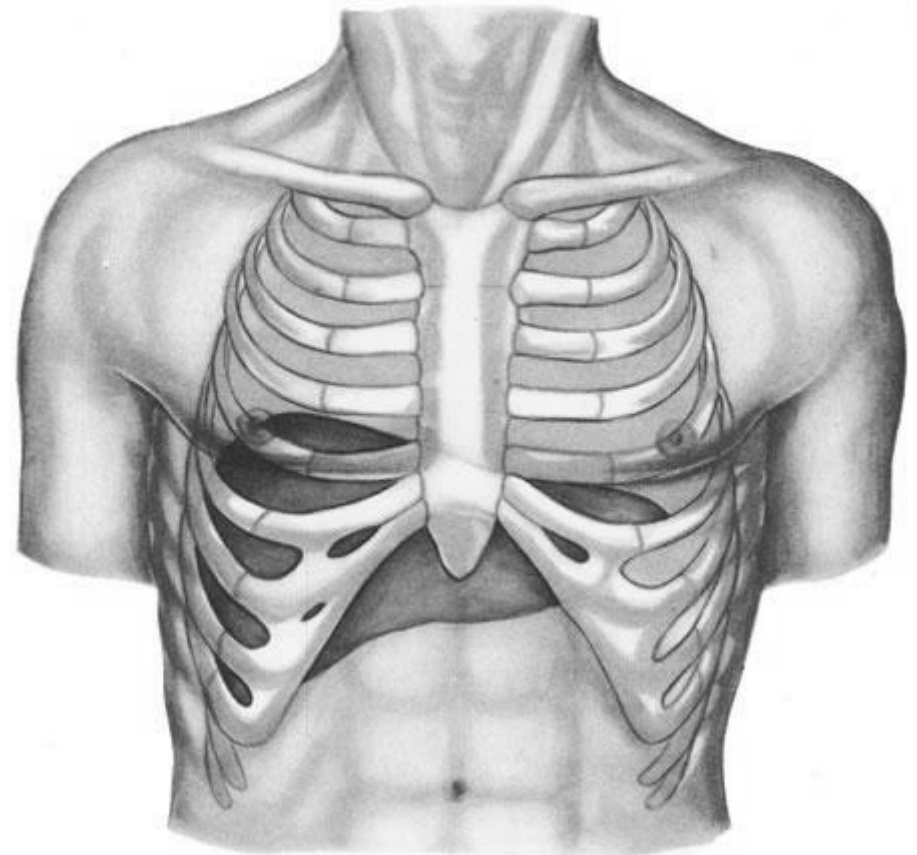


**Gall bladder and  
duodenum  
(anterior aspect)**

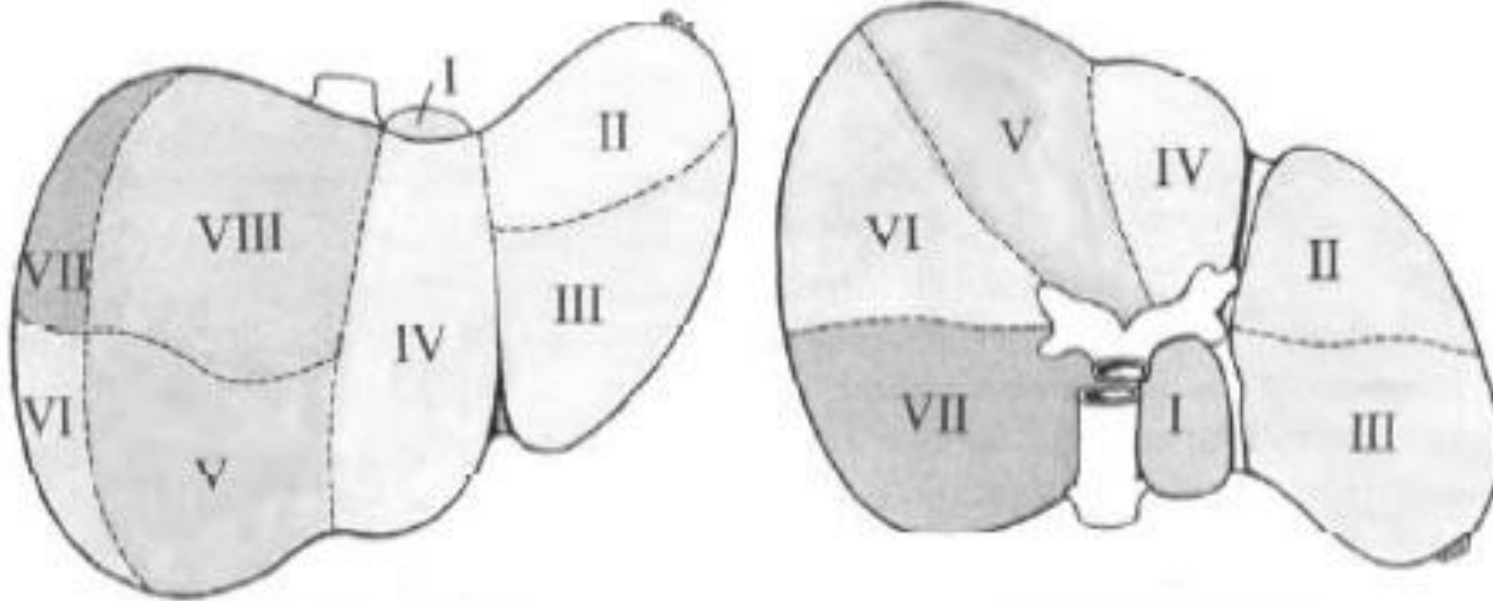
**Task 24: Write the numbers of the ribs and vertebrae to show the skeletotopy of the pancreas**



**Task 25: Write the numbers of the ribs and topographical lines of the thorax on the following picture to show the skeletotopy of the liver.**

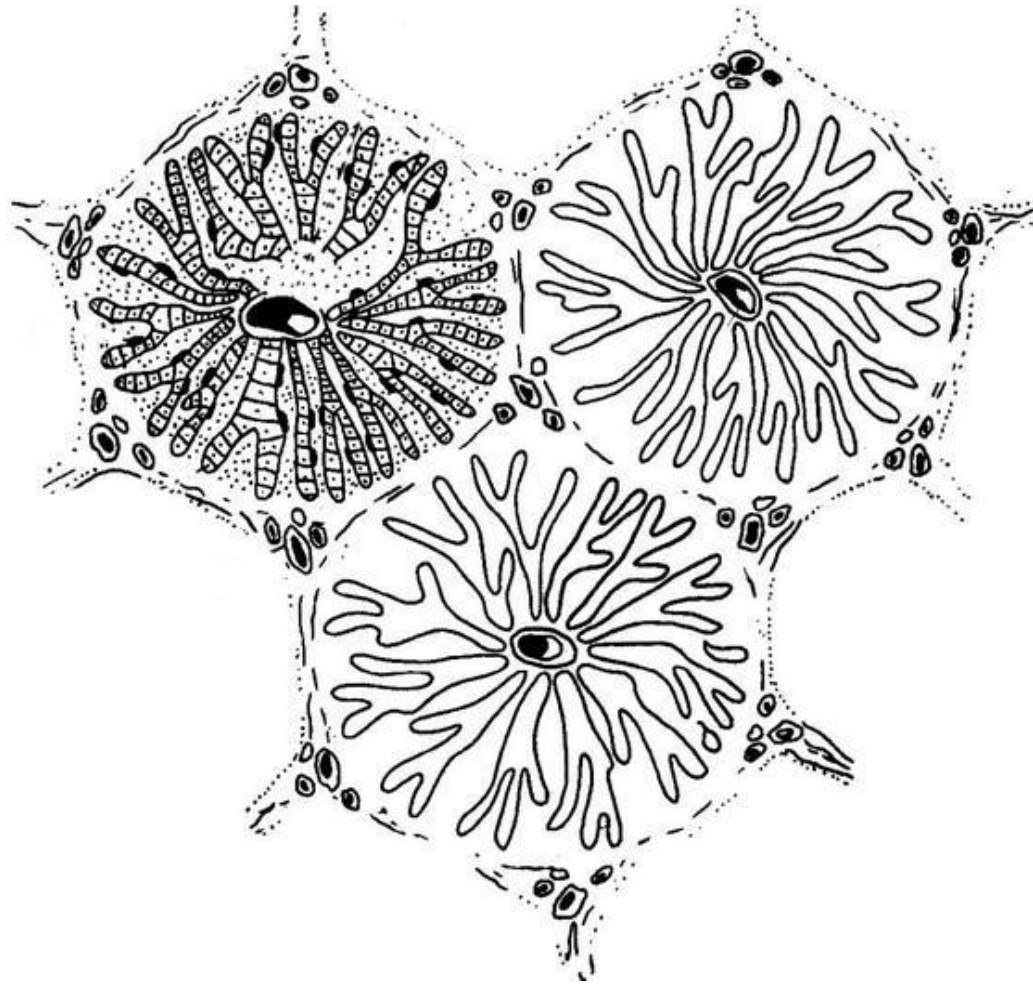


**Task 26: Mark with colored pencils the segments of the liver, and write their names.**



- I \_\_\_\_\_
- II \_\_\_\_\_
- III \_\_\_\_\_
- IV \_\_\_\_\_
- V \_\_\_\_\_
- VI \_\_\_\_\_
- VII \_\_\_\_\_
- VIII \_\_\_\_\_

**Task 27: Indicate the central veins and hepatic triads on the following picture. Mark with lines the borders of the hepatic lobule, portal lobule and hepatic acinus.**



**Microscopic structure of  
liver**