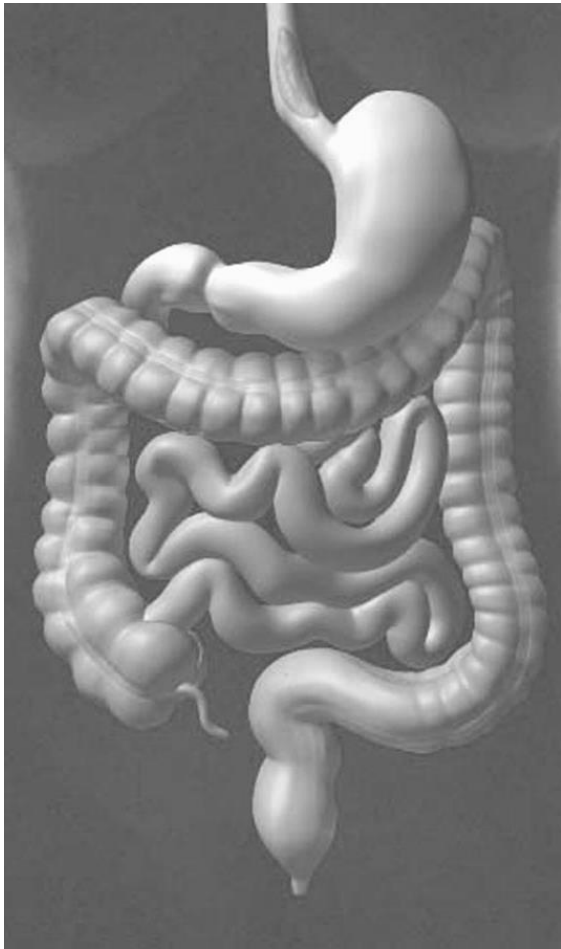


Task 19: Indicate the parts of the small and large intestine on the following picture and radiograph.



**Stomach and intestine
(anterior aspect)**



**Radiograph of large
intestine**

Task 20: Complete the tables.

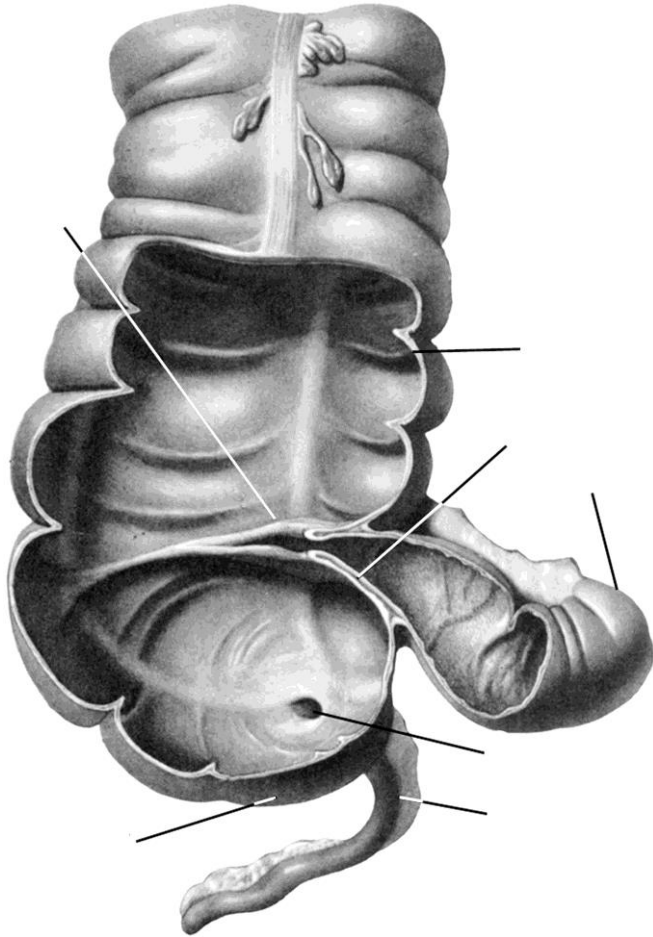
Features of the jejunum and ileum

Sign	Jejunum	Ileum
Diameter		
Length		
Color		
Position		
Number of villi		
Folds		
Lymphatic follicles		
Function		

Features of the small and large intestine

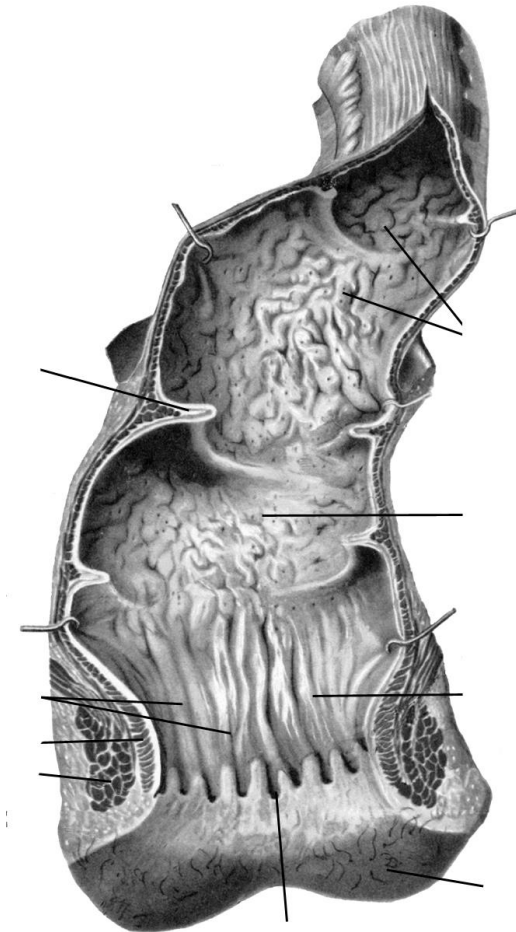
Sign	Small intestine	Large intestine
Diameter		
Length		
Color		
Position		
Number of villi		
Folds		
Lymphatic follicles		
Function		
Taniae		
Haustrae		
Epiploic appendices		

Task 21: Write the names of the structures, indicated on the following picture.



**Caecum and terminal
part of ileum
(frontal section)**

**Task 22: Write the names of structural features
of the rectum, indicated on the following
picture.**



**Rectum
(frontal section)**