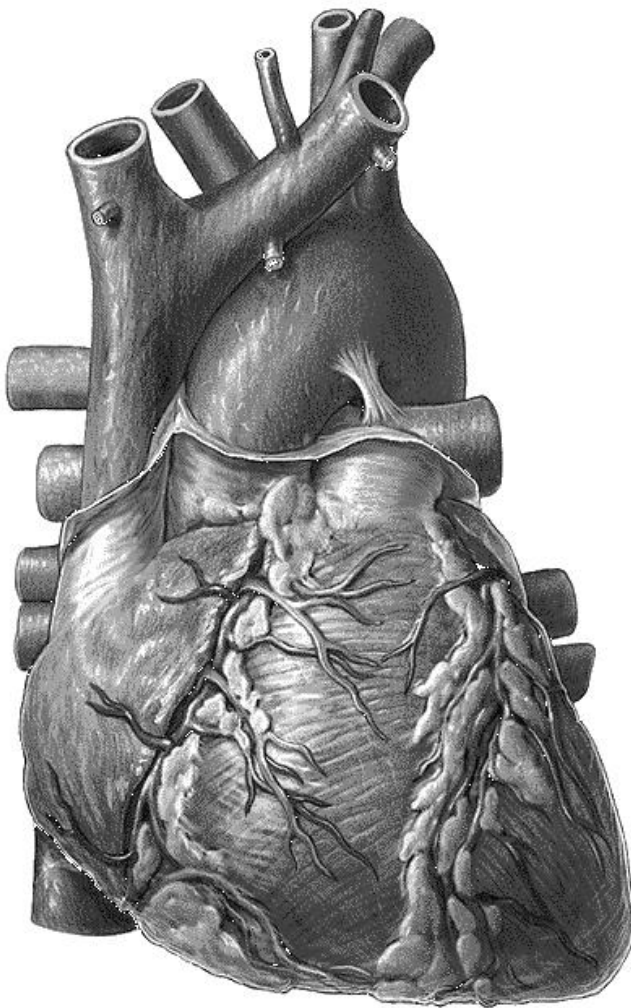
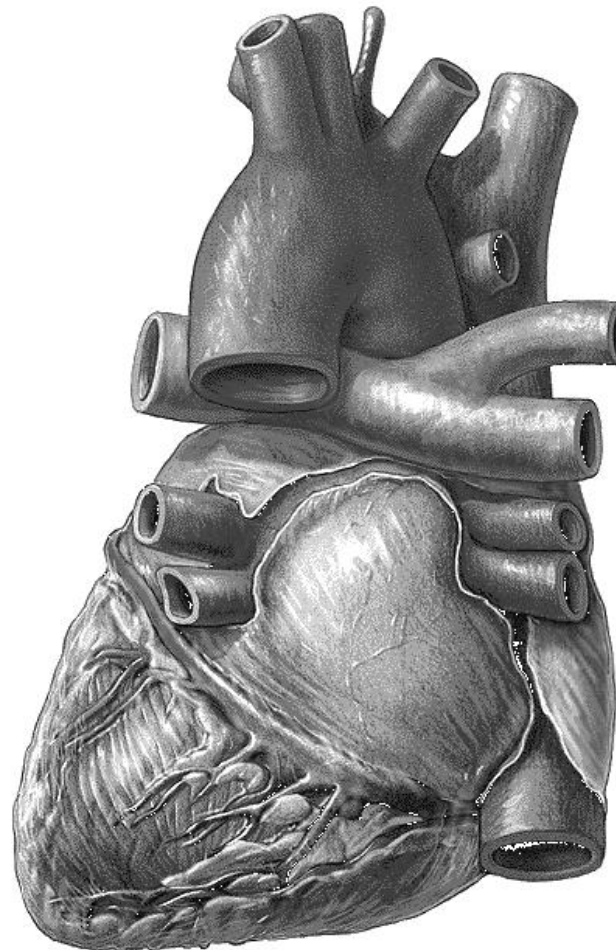


Task 1: Indicate the listed structures on the following pictures.



Heart
(anterior aspect)

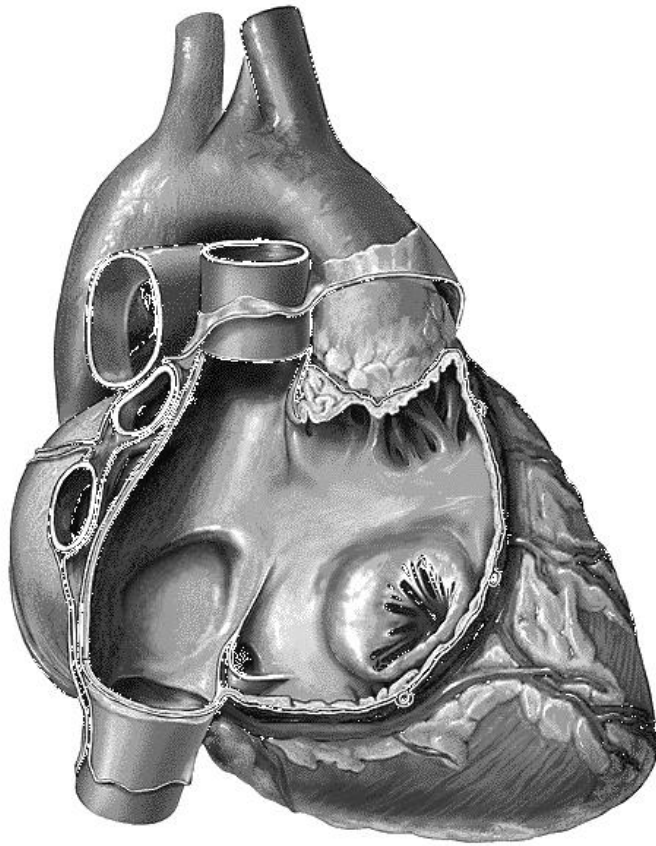
1. Base of heart (basis cordis)
2. Apex of heart (apex cordis)
3. Sternocostal surface (facies sternocostalis)
4. Diaphragmatic surface (facies diaphragmatica)
5. Pulmonary surfaces (facies pulmonales)
6. Right atrium (atrium dextrum)
7. Left atrium (atrium sinistrum)



Heart
(posterior aspect)

8. Right ventricle (ventriculus dexter)
9. Left ventricle (ventriculus sinister)
10. Anterior interventricular sulcus (sulcus interventricularis anterior)
11. Posterior interventricular sulcus (sulcus interventricularis posterior)
12. Superior vena cava (vena cava superior)
13. Inferior vena cava (vena cava inferior)
14. Coronary sinus (sinus coronarius)
15. Pulmonary trunk (truncus pulmonalis)
16. Pulmonary veins (venae pulmonales)
17. Aortic bulb (bulbus aortae)
18. Aortic arch (arcus aortae)

Task 2: Indicate the listed structures on the following pictures.

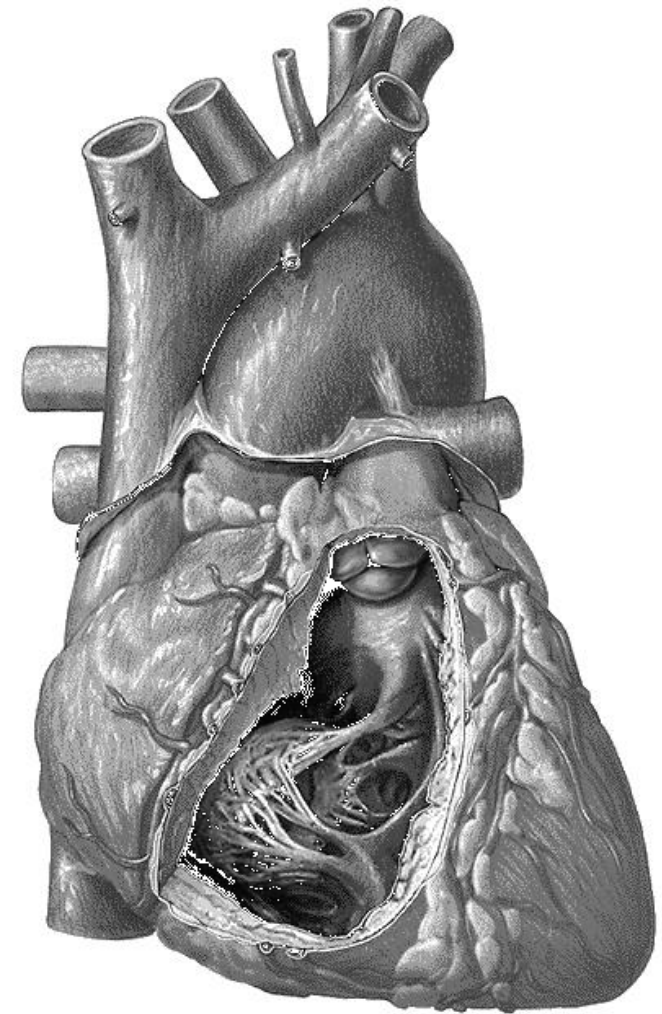


Heart (right atrium has been opened)

1. Right auricle (auricula dextra)
2. Right atrium (atrium dextrum)
3. Right ventricle (ventriculus dexter)
4. Interatrial septum (septum interatriale)
5. Interventricular septum (septum interventriculare)
6. Opening of superior vena cava (ostium venae cavae superioris)
7. Opening of inferior vena cava (ostium venae cavae inferioris)
8. Opening of coronary sinus (ostium sinus coronarii)
9. Valve of inferior vena cava (valvula venae cavae inferioris)
10. Oval fossa (fossa ovalis)
11. Pectinate muscles (musculi pectinati)
12. Right atrioventricular orifice (ostium atrioventriculare dextrum)
13. Right fibrous ring (annulus fibrosus dexter)
14. Valve of pulmonary trunk: anterior, right and left semilunar cusps (valva trunci pulmonales: valvula semilunaris anterior, dextra et sinistra)
15. Tricuspid valve: anterior, posterior and septal cusps (valva tricuspidalis: cuspis anterior, posterior et septalis)

anterior, posterior et septalis)

16. Tendinous cords (chordae tendineae)
17. Papillary muscles (musculi papillares)
18. Trabeculae carneae (trabeculae carneae)

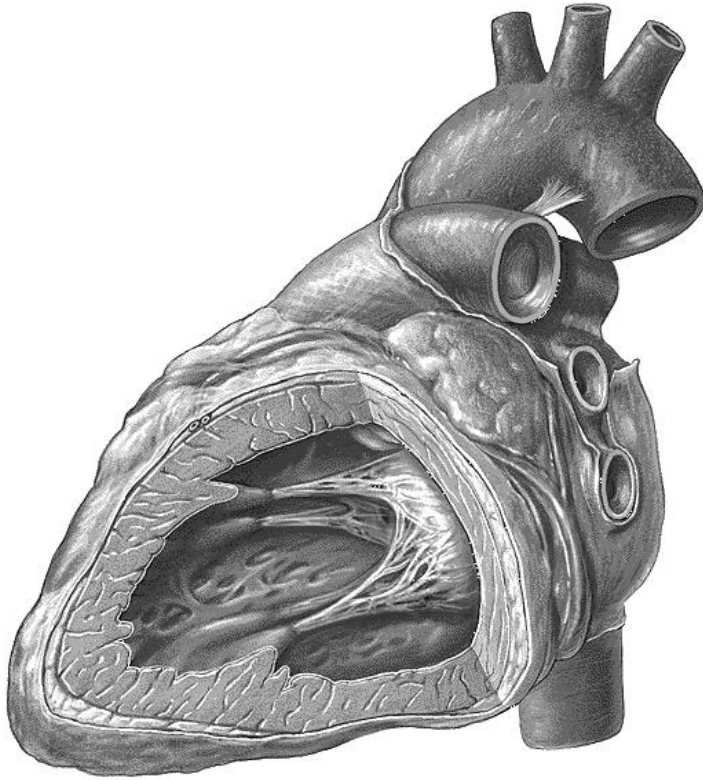


Heart (right ventricle has been opened)

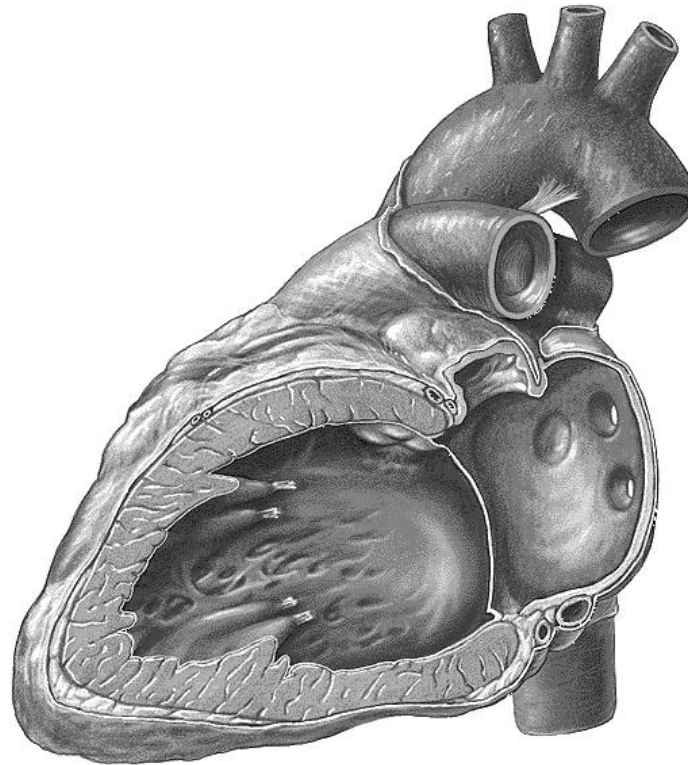
Task 3: Indicate the listed structures on the following pictures.

1. Left atrium (atrium sinistrum)
2. Left auricle (auricular sinistra)
3. Left ventricle (ventriculus sinister)
4. Interatrial septum (septum interatriale)
5. Interventricular septum (septum interventriculare)
6. Left atrioventricular orifice (ostium atrioventriculare sinistrum)
7. Left fibrous ring (annulus fibrosus sinister)
8. Bicuspid valve: anterior and posterior (valva bicuspidalis: cuspis anterior et posterior)
9. Tendinous cords (chordae tendineae)

10. Papillary muscles (musculi papillares)
11. Trabeculae carneae (trabeculae carneae)
12. Openings of pulmonary veins (ostia venarum pulmonalium)
13. Aortic valve: posterior, right and left semilunar cusps (valva aortae: valvula semilunaris posterior, dextra et sinistra)



Heart (left ventricle has been opened)



Heart (left atrium and left ventricle have been opened, bicuspid valve has been removed)