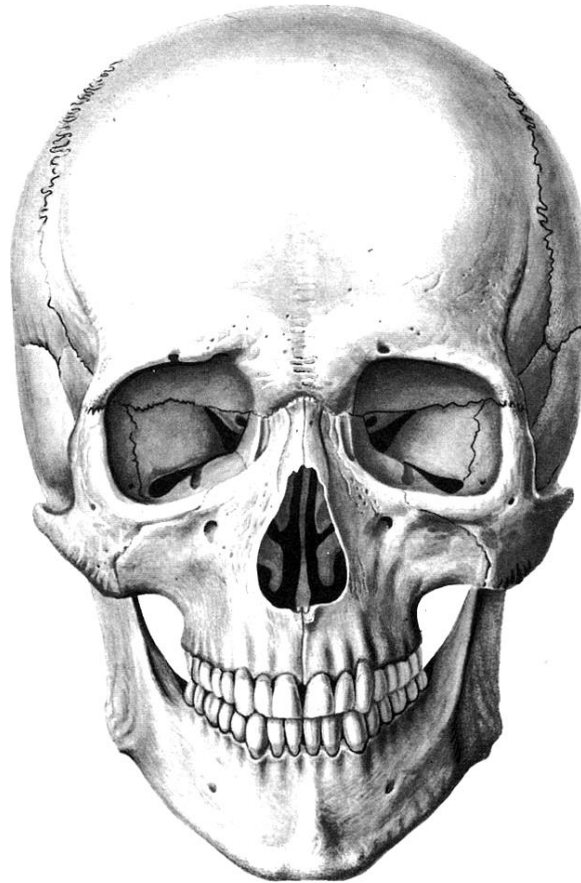
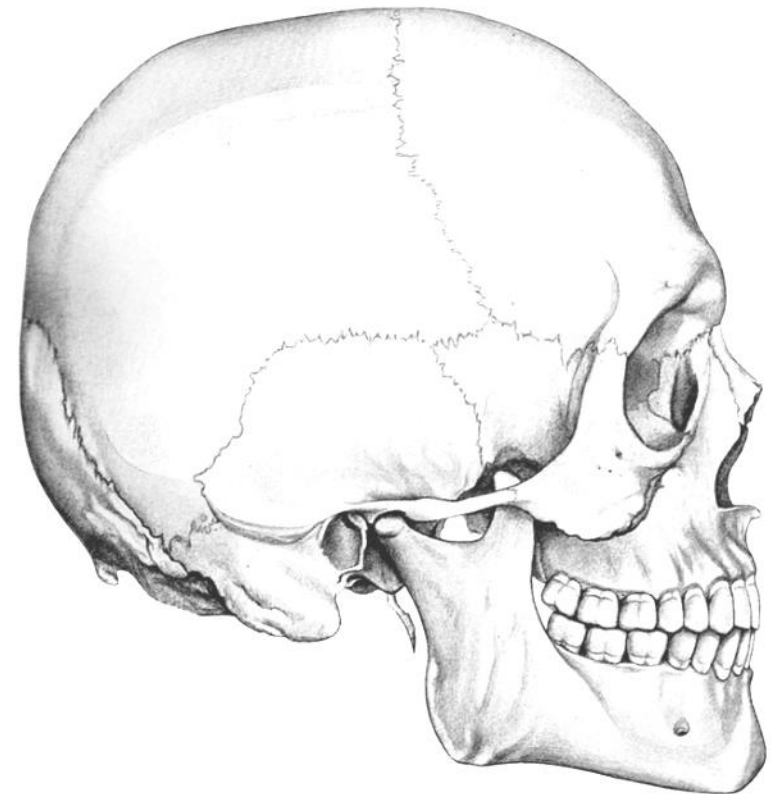


Bones of Neurocranium

(mark the bones of neurocranium (frontal, occipital, ethmoid, sphenoid, parietal, temporal bones) in different colors on the following pictures)



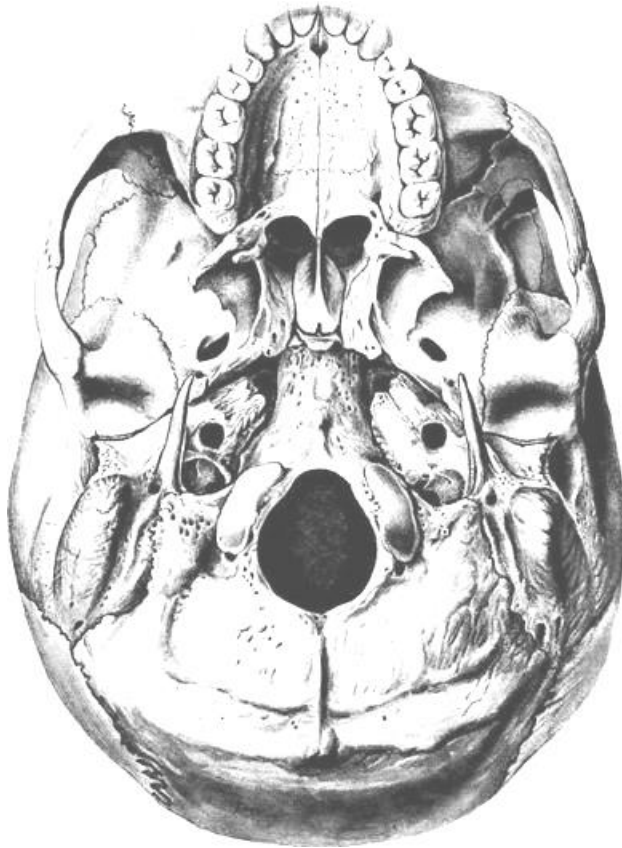
**Skull
(anterior aspect)**



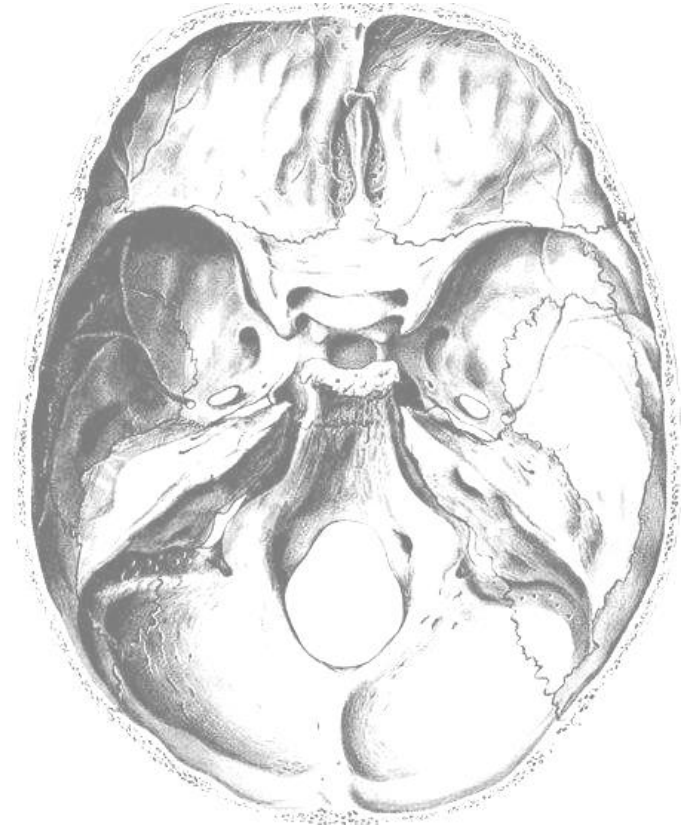
**Skull
(lateral aspect)**

Bones of Neurocranium

(mark the bones of neurocranium (frontal, occipital, ethmoid, sphenoid, temporal bones) in different colors in the following pictures)



**Skull
(external base)**

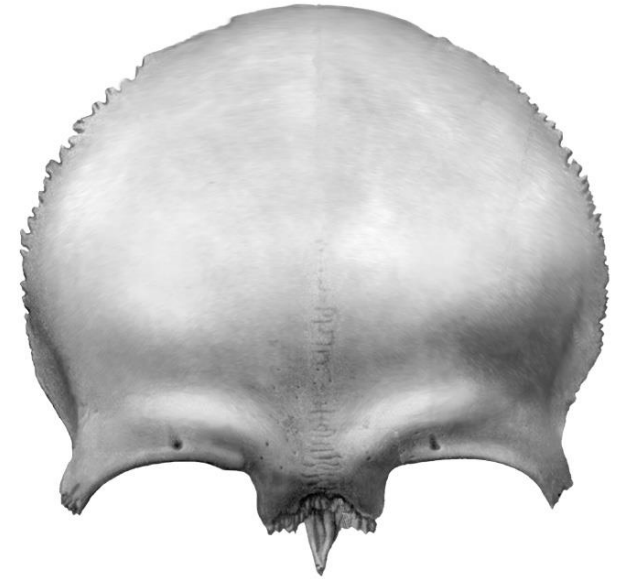


**Skull
(internal base)**

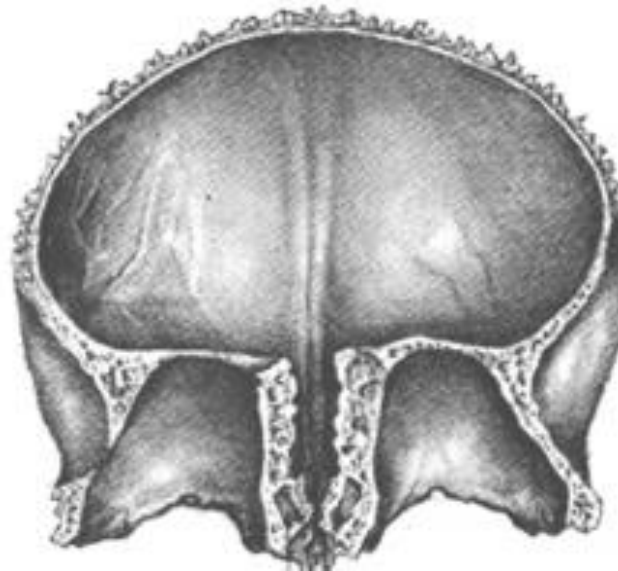
Frontal Bone

(indicate the listed structures on the following pictures)

1. squamos part, *squama frontalis*;
2. orbital part, *partes orbitalis*;
3. nasal part, *pars nasalis*;
4. supraorbital margin, *margo supraorbitalis*;
5. zygomatic process, *processus zygomaticus*;
6. supraorbital foramen, *foramen supraorbitale*;
7. frontal notch, *incisura frontalis*;
8. temporal line, *linea temporalis*;
9. temporal surface, *facies temporalis*;
10. superciliary arch, *arcus superciliaris*;
11. glabella, *glabella*;
12. groove for superior sagittal sinus, *sulcus sinus sagittalis superioris*;
13. frontal crest, *crista frontalis*;
14. fossa for lacrimal gland, *fossa glandulae lacrimalis*;
15. ethmoidal notch, *incisura ethmoidalis*;
16. nasal spine, *spina nasalis*;



**Frontal bone
(external surface)**



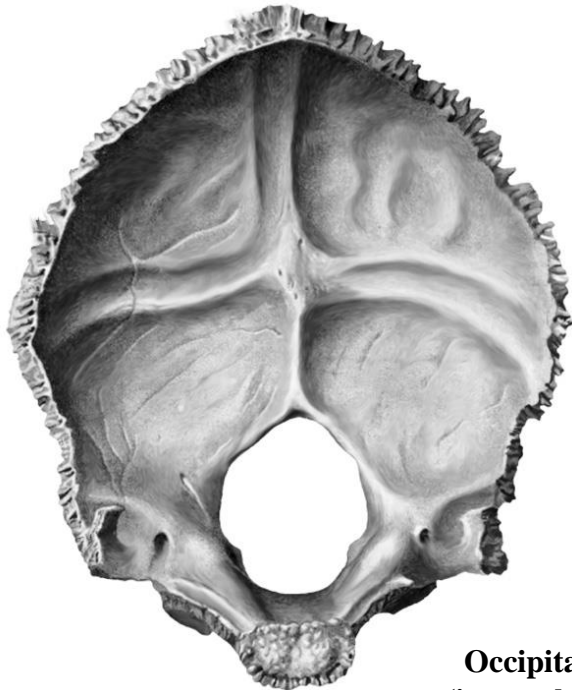
**Frontal bone
(internal surface)**

Occipital Bone

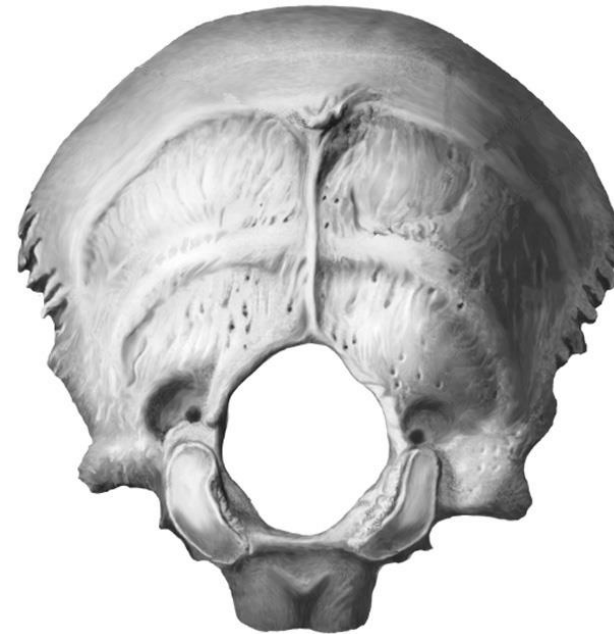
(indicate the listed structures on the following pictures)

1. basilar part, *pars basilaris*;
2. lateral parts, *partes laterales*;
3. squamous part, *squama occipitalis*;
4. foramen magnum, *foramen magnum*;
5. pharyngeal tubercle, *tuberculum pharyngeum*;
6. occipital condyle, *condylus occipitalis*;
7. condylar fossa, *fossa condylaris*;
8. condylar canal, *canalis condylaris*;
9. jugular notch, *incisura jugularis*;
10. groove for sigmoid sinus, *sulcus sinus sigmoidei*;
11. cruciform eminence, *eminentia cruciformis*;
12. internal occipital protuberance, *protuberantia occipitalis interna*;

13. internal occipital crest, *crista occipitalis interna*;
14. groove for superior sagittal sinus, *sulcus sinus sagittalis superioris*;
15. groove for transverse sinus, *sulcus sinus transversi*;
16. external occipital protuberance, *protuberantia occipitalis externa*;
17. external occipital crest, *crista occipitalis externa*;
18. superior nuchal line, *linea nuchalis superior*;
19. inferior nuchal line, *linea nuchalis inferior*;
20. highest nuchal line, *linea nuchalis superior*;



**Occipital bone
(internal surface)**



**Occipital bone
(external surface)**

Parietal Bone

(indicate the listed structures on the following pictures)

1. sagittal border, *margo sagittalis*;
2. frontal border, *margo frontalis*;
3. occipital border, *margo occipitalis*;
4. squamosal border, *margo squamosus*;
5. frontal angle, *angulus frontalis*;
6. occipital angle, *angulus occipitalis*;
7. sphenoidal angle, *angulus sphenoidalis*;
8. mastoid angle, *angulus mastoideus*;
9. parietal tuber, *tuber parietale*;
10. inferior temporal line, *linea temporalis inferior*;
11. superior temporal line, *linea temporalis superior*;
12. groove for superior sagittal sinus, *sulcus sinus sagittalis superioris*;
13. groove for sigmoid sinus, *sulcus sinus sigmoidei*;



**Parietal bone
(external surface)**



**Parietal bone
(internal surface)**

