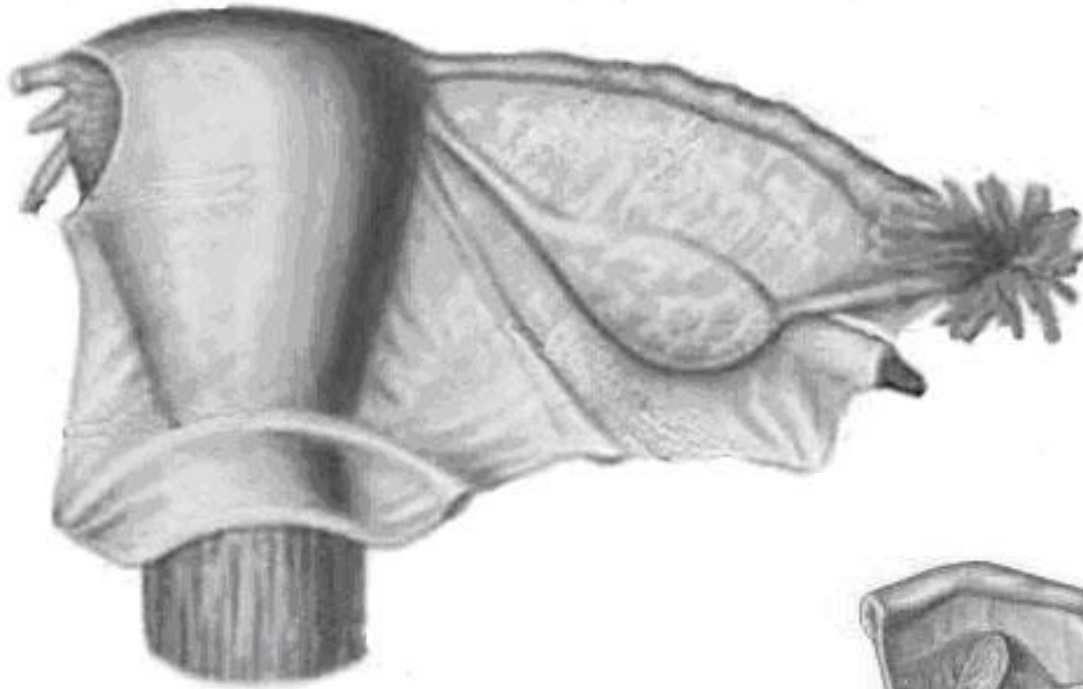
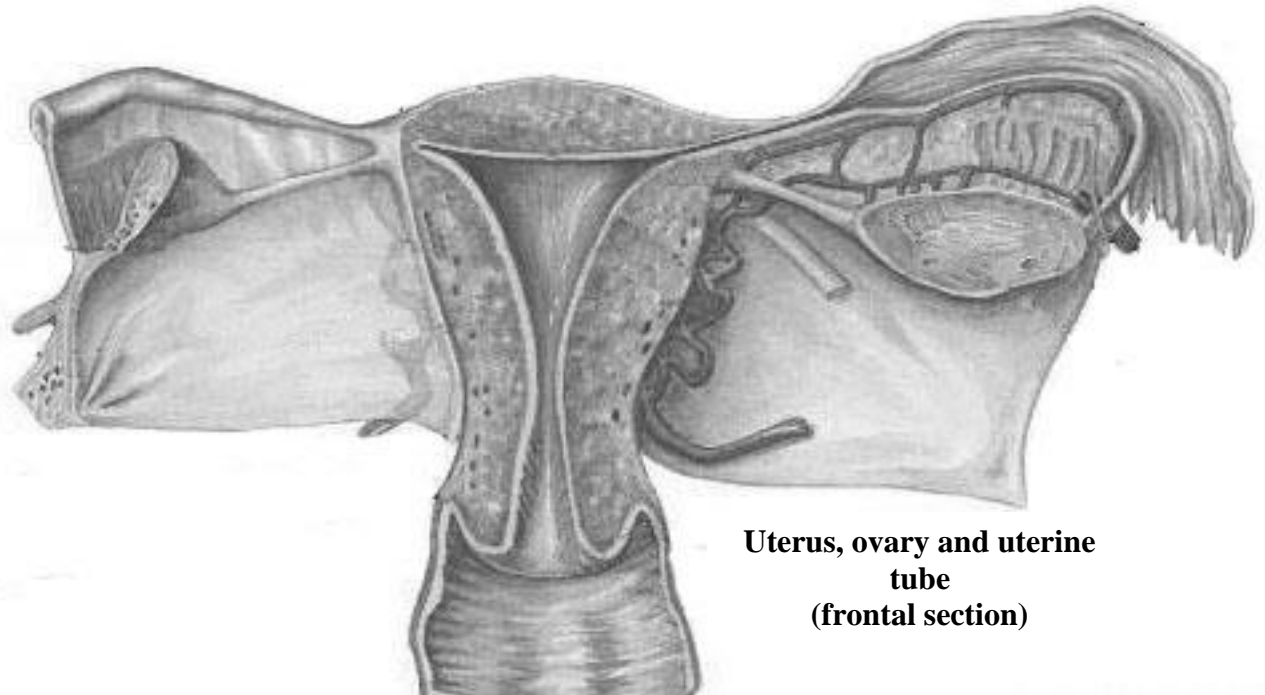


1. Indicate the listed structures on the pictures.



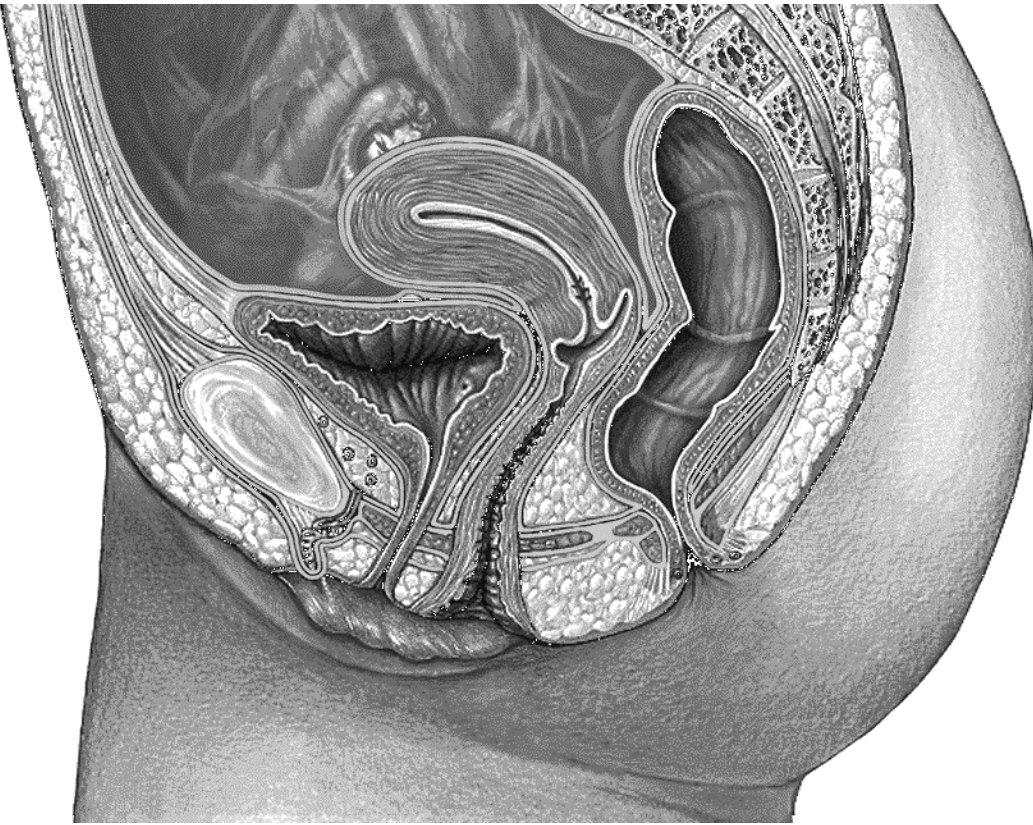
**Uterus, ovary and uterine tube
(posterior aspect)**

1. Fundus of uterus (fundus uteri);
2. Corpus of uterus (corpus uteri);
3. Isthmus of uterus (cervix uteri);
4. Cervix of uterus (cervix uteri): supravaginal and vaginal parts;
5. Uterine cavity (cavitas uteri);
6. Cervical canal (canalis cervicis uteri);
7. External os of uterus (ostium uteri externum);
8. Internal os of uterus (ostium uteri internum);
9. Vaginal fornices: anterior, posterior, laterals (fornix vaginae);
10. Round ligament of uterus (ligamentum teres uteri);
11. Broad ligament of uterus (ligamentum latum uteri);



**Uterus, ovary and uterine
tube
(frontal section)**

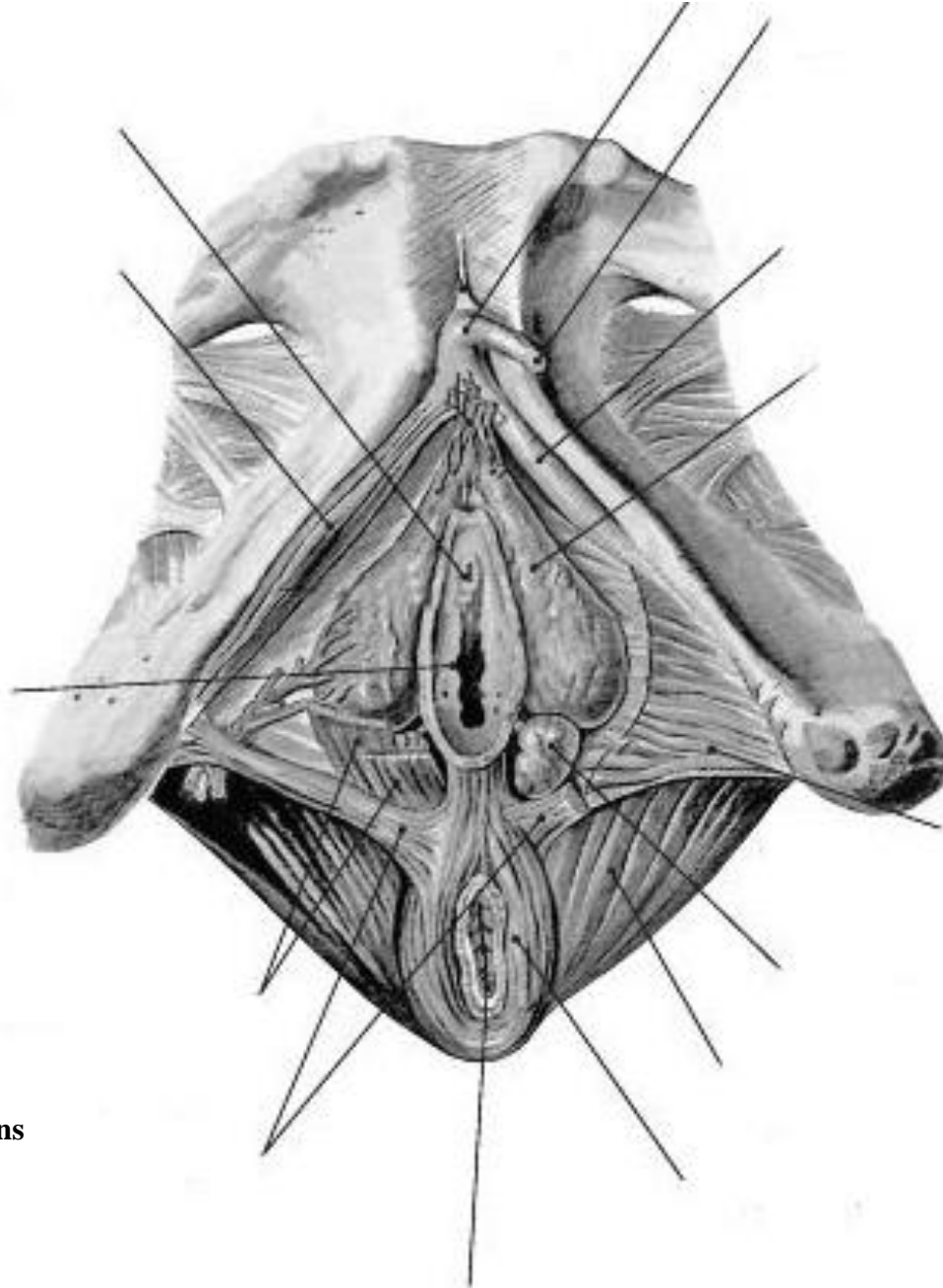
12. Endometrium (endometrium);
13. Myometrium (myometrium);
14. Perimetrium (perimetrium);
15. Ovary (ovarium);
16. Free border of ovary (margo liber ovari);
17. Mesovarian border of ovary (margo mesovarica ovari);
18. Uterine extremity of ovary (extremitas uterina);
19. Tubal extremity of ovary (extremitas tubaria);



**Organs of female pelvis
(sagittal section)**

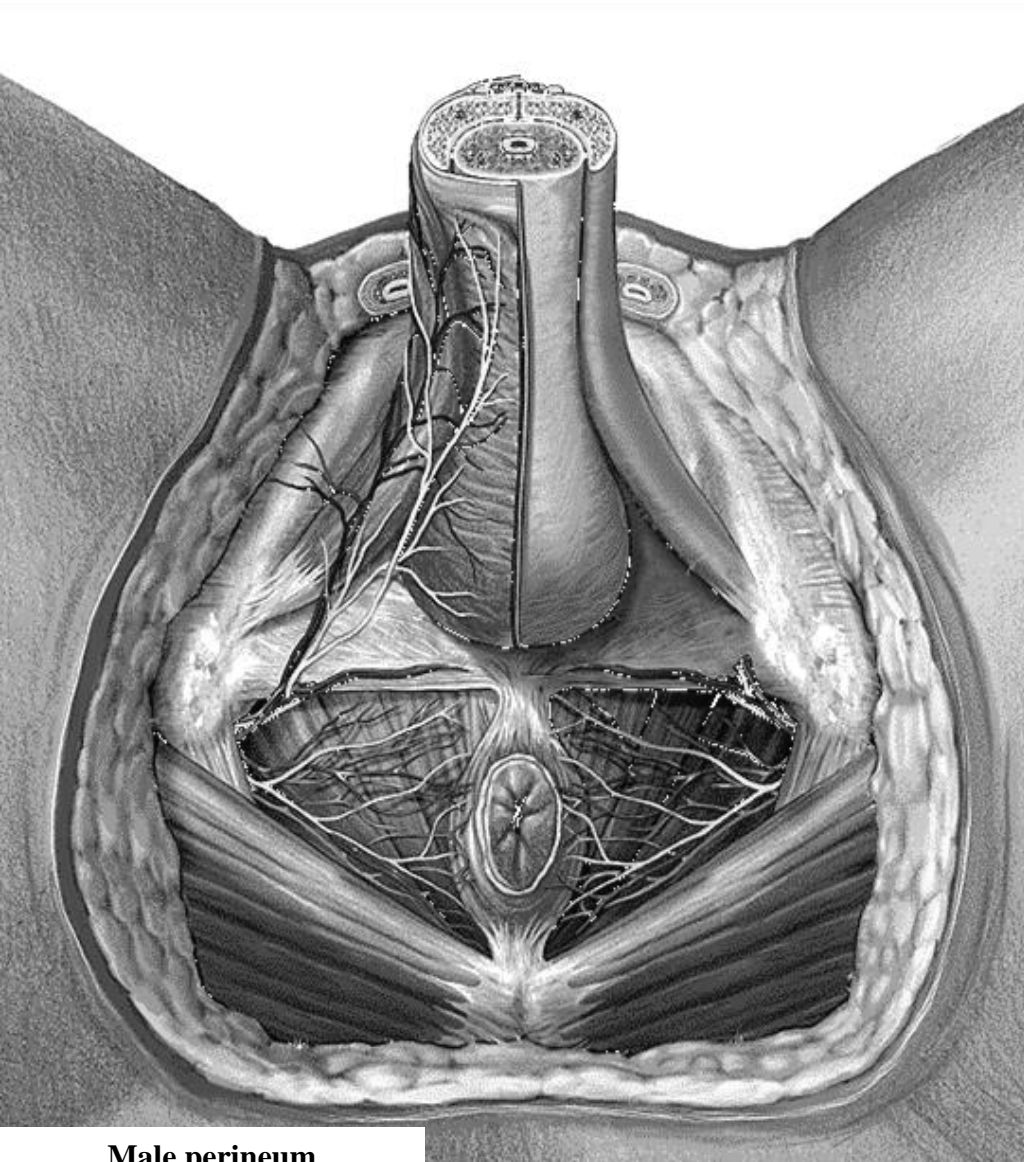
20. Hilum of ovary (hilum ovarii);
21. Tunica albuginea (tunica albuginea);
22. Ovarian cortex (cortex ovarii);
23. Ovarian medulla (medulla ovarii);
24. Mesovarium (mesovarium);
25. Suspensory ligament of ovary (ligamentum suspensorium ovarii);
26. Ovarian ligament (ligamentum proprium ovarii);
27. Uterine tube (tuba uterina);
28. Mesosalpinx (mesosalpinx);
29. Uterine part of uterine tube (pars uterina tubae);
30. Ampulla of uterine tube (ampulla tubae uterinae);
31. Isthmus of uterine tube (isthmus tubae uterinae);
32. Infundibulum of uterine tube (infundibulum tubae uterinae);
33. Fimbriae of uterine tube (fimbriae tubae uterinae);
34. Uterine orifice of uterine tube (ostium uterinum);
35. Abdominal orifice of uterine tube (ostium abdominalis);
36. Vaginal orifice (ostium vaginae);

2: Write the names of the structures, indicated on the picture.



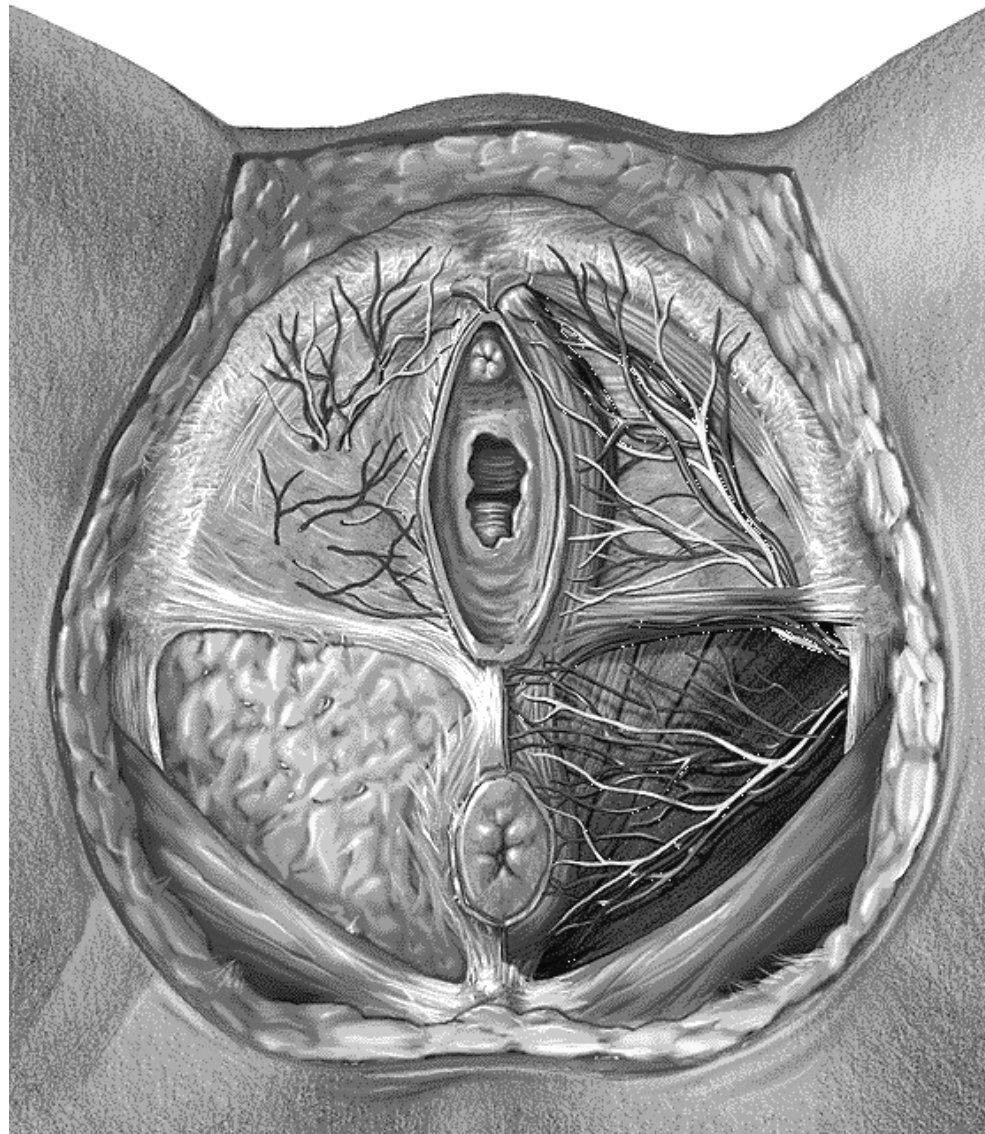
**External female
reproductive organs**

3: Indicate the listed structures on the pictures.



Male perineum

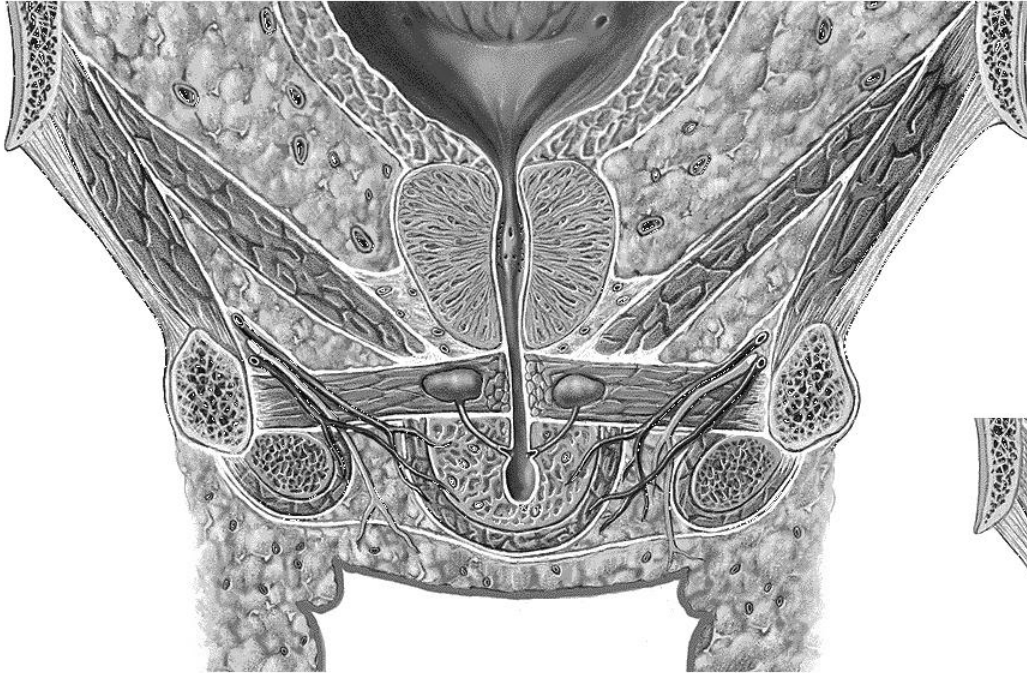
1. Ischial tuberosities (tubera ischiadica);
2. Ramus of ischium and inferior ramus of pubis;
3. Coccyx;
4. Urogenital diaphragm (diaphragma urogenitalis);
5. Pelvic diaphragm (diaphragma pelvis);
6. Transversus perinei superficialis (m. transversus perinei superficialis);
7. Ischiocavernosus (m. ischiocavernosus);
8. Bulbospongiosus (m. bulbospongiosus);
9. Transversus perinei profundus (m. transversus perinei profundus);
10. External urethral sphincter (m. sphincter urethrae externus);
11. Sphincter ani externus (m. sphincter ani externus);
12. Levator ani (m. levator ani);
13. Coccygeus (m. coccygeus);
14. Ischioanal fossa (fossa ischioanal)



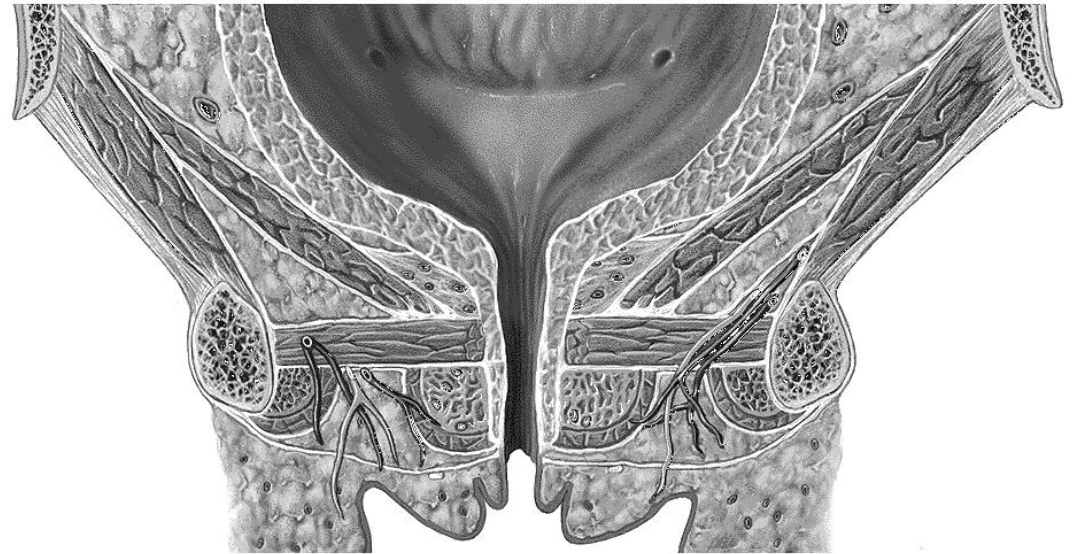
Female perineum

4:

- a) Indicate the visible male and female reproductive organs, and write their names;**
- b) Indicate the boundaries of the ischiorectal fossa; write the structures, bounding it, and mark the content of the fossa.**



**Male reproductive organs
and perineum
(frontal section)**



**Female reproductive organs
and perineum
(frontal section)**