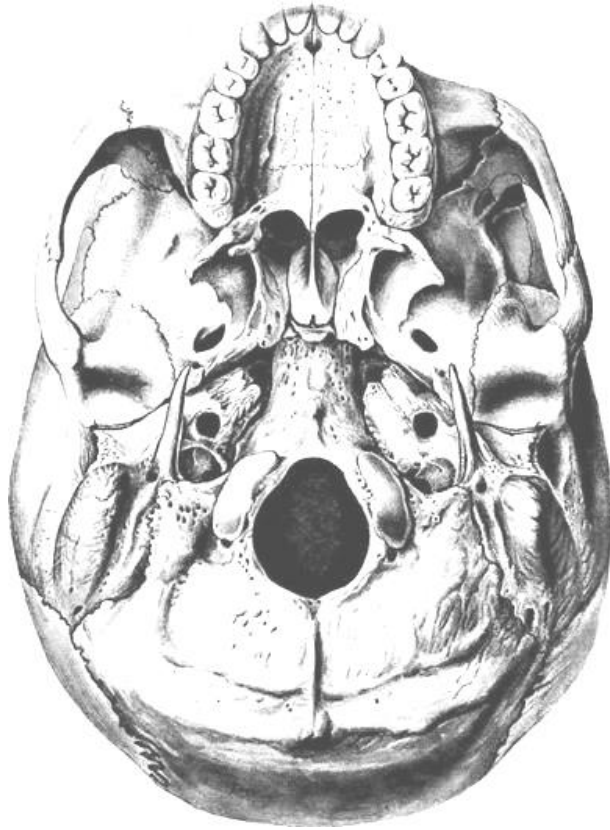
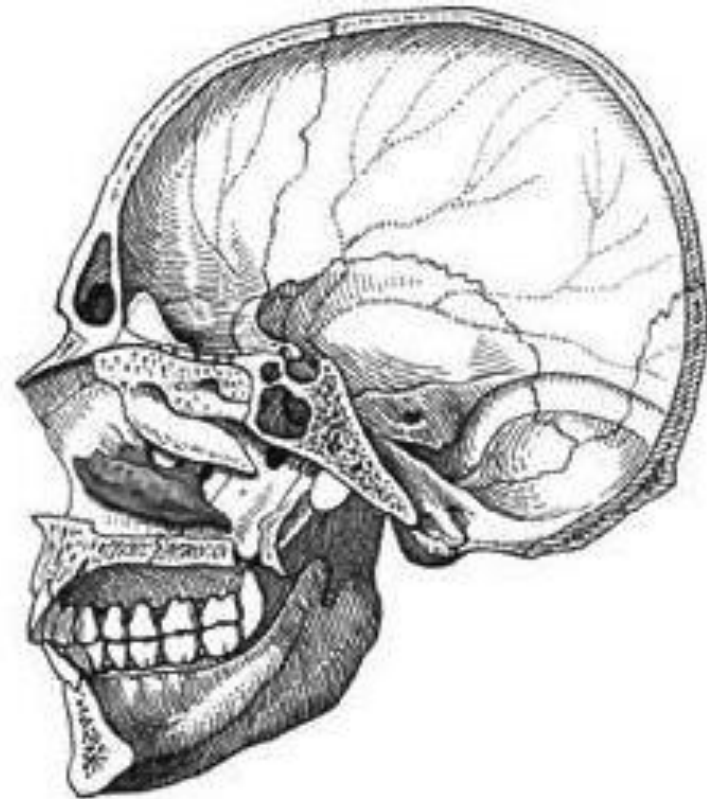


### **Bones of Viscerocranium**

**(mark the bones of viscerocranium (maxillae, palatine bones, zygomatic bones, nasal bone, inferior nasal concha, vomer, mandible) in different colors)**



**Skull**  
**(external base)**

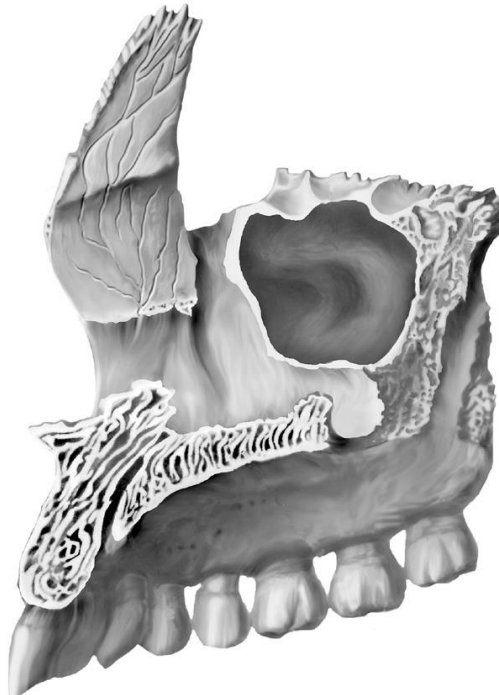


**Skull**  
**(sagittal section)**

## Maxilla

(indicate the listed structures on the pictures)

1. body, *corpus maxillae*;
2. frontal process, *processus frontalis*;
3. zygomatic process, *processus zygomaticus*;
4. alveolar process, *processus alveolaris*;
5. palatine process, *processus palatinus*;
6. maxillary hiatus, *hiatus maxillaris*;
7. anterior surface, *facies anterior*;
8. infratemporal surface, *facies infratemporalis*;
9. orbital surface, *facies orbitalis*;
10. nasal surface, *facies nasalis*.
11. infraorbital margin, *margo infraorbitalis*;
12. infraorbital foramen, *foramen infraorbitale*;
13. canine fossa, *fossa canina*;
14. maxillary tuber, *tuber maxillae*;
15. nasal notch, *incisura nasalis*;
16. greater palatine groove, *sulcus palatinus major*;
17. lacrimal groove, *sulcus lacrimalis*;
18. conchal crest, *crista conchalis*;
19. anterior lacrimal crest, *crista lacrimalis anterior*;
20. ethmoidal crest, *crista ethmoidalis*;
21. anterior nasal spine, *spina nasalis anterior*;
22. alveolar yokes, *juga alveolaria*;



Right maxilla

(medial aspect)



Right maxilla

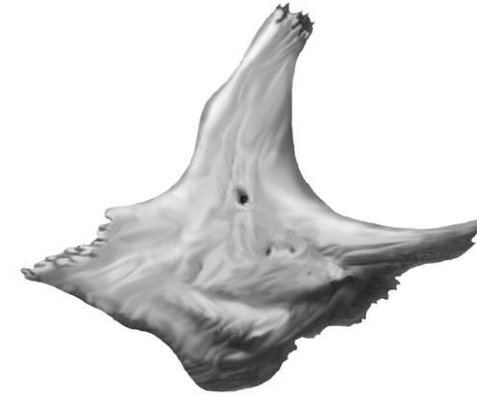
(lateral aspect)

## Zygomatic and Lacrimal Bones

(indicate the listed structures on the pictures)

### Zygomatic bone:

1. infraorbital margin, *margo infraorbitalis*;
2. lateral surface, *facies lateralis*;
3. zygomaticofacial foramen, *foramen zygomaticofaciale*;
4. temporal process, *processus temporalis*;
5. frontal process, *processus frontalis*;



Zygomatic bone

### Lacrimal bone:

1. posterior lacrimal crest, *crista lacrimalis posterior*;
2. lacrimal hamulus, *hamulus lacrimalis*;
3. lacrimal groove, *sulcus lacrimalis*;



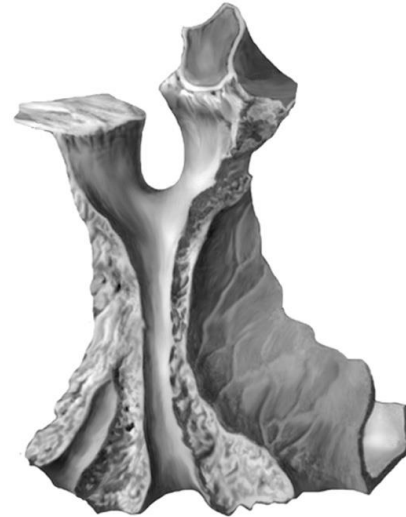
Lacrimal bone

## Palatine and Hyoid Bone

(indicate the listed structures on the following pictures)

### Palatine bone:

1. horizontal plate, *lamina horizontalis*;
2. perpendicular plate, *lamina perpendicularis*;
3. greater palatine groove, *sulcus palatinus major*;
4. conchal crest, *crista conchalis*;
5. ethmoidal crest, *crista ethmoidalis*;
6. pyramidal process, *processus pyramidalis*;
7. orbital process, *processus orbitalis*;
8. sphenoidal process, *processus sphenoidalis*;
9. sphenopalatine notch, *incisura sphenopalatina*



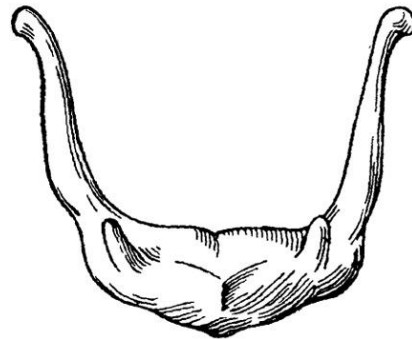
Right palatine bone  
(external aspect)



Right palatine bone  
(internal aspect)

### Hyoid bone:

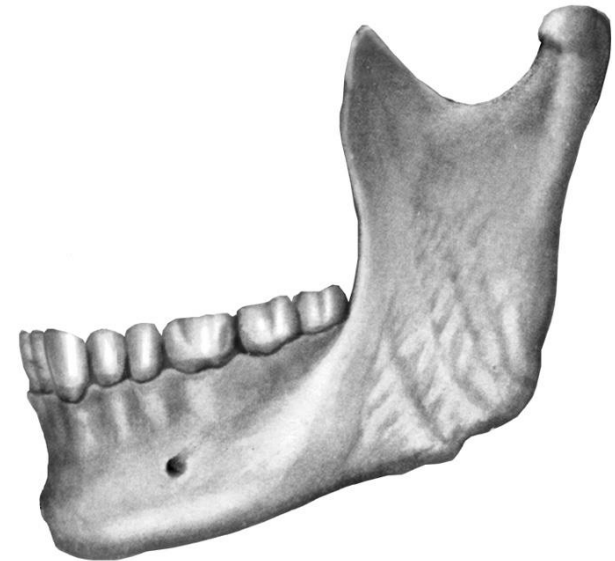
1. body, *corpus*;
2. greater horns, *cornua majora*;
3. lesser horns, *cornua minora*



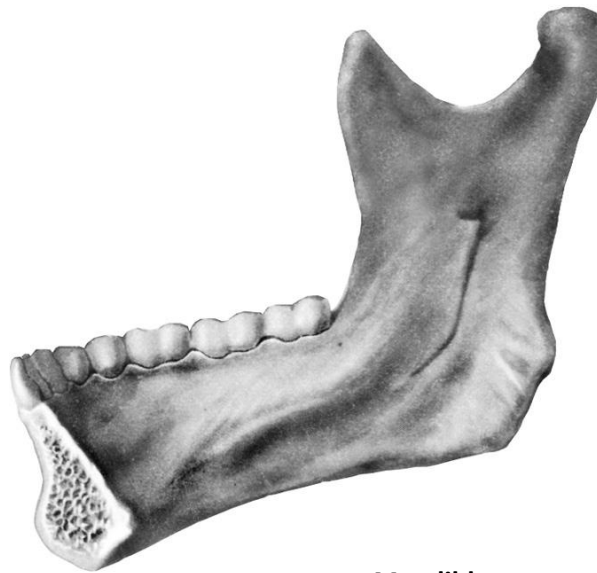
Hyoid bone  
(superior aspect)

**Mandible**  
(indicate the listed structures on the pictures)

1. body of mandible, *corpus mandibulae*;
2. alveolar arch, *arcus alveolaris*;
3. mental protuberance, *protuberantia mentalis*;
4. mental foramen, *foramen mentale*;
5. mental spine, *spina mentalis*;
6. sublingual fossa, *fovea sublingualis*;
7. digastric fossa, *fossa digastrica*;
8. mylohyoid line, *linea mylohyoidea*;
9. submandibular fossa, *fovea submandibularis*;
10. masseteric tuberosity, *tuberositas masseterica*;
11. pterygoid tuberosity, *tuberositas pterygoidea*;
12. mandibular foramen, *foramen mandibulae*;
13. lingula of mandible, *lingula mandibulae*;
14. mandibular notch, *incisura mandibulae*;
15. coronoid process, *processus coronoideus*;
16. condylar process, *processus condylaris*;
17. head of mandible, *caput mandibulae*;
18. neck of mandible, *collum mandibulae*;



**Mandible**  
(external aspect)



**Mandible**  
(internal aspect)

