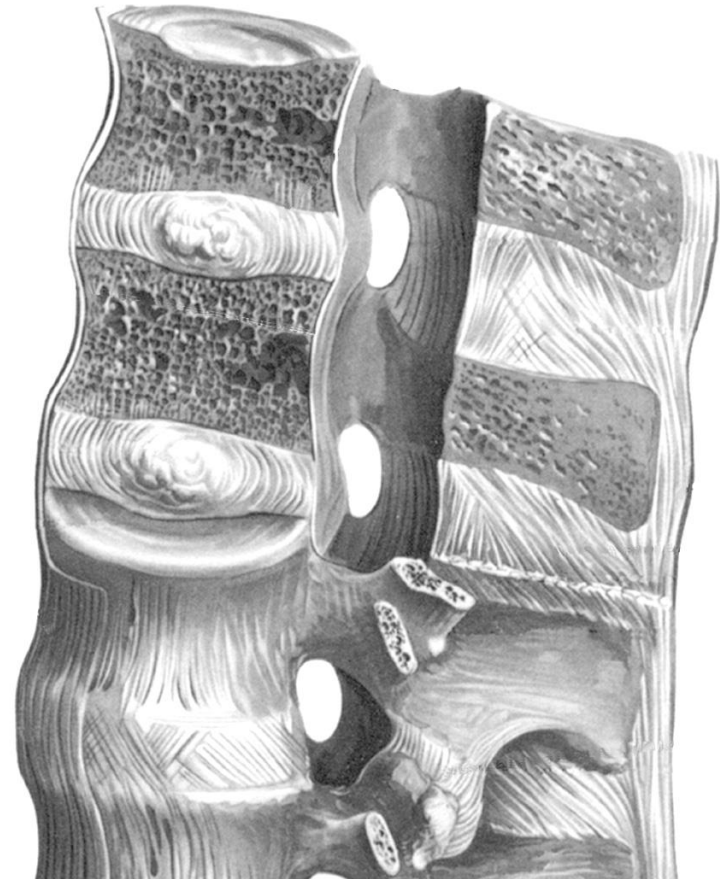


SELFTESTS: THE JOINTS OF THE VERTEBRAL COLUMN

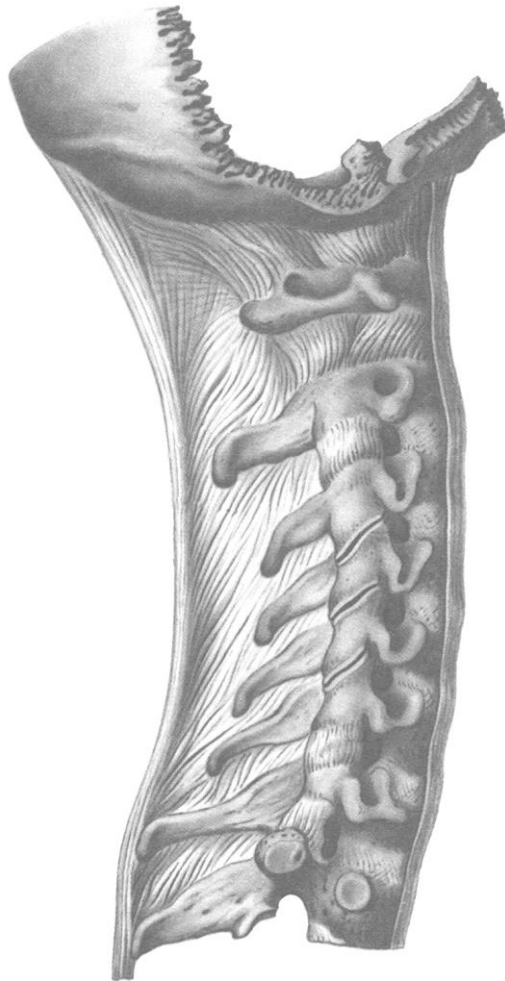
Task 1: Indicate the list on the following picture

1. intervertebral disc, *discus intervertebralis*;
2. anterior longitudinal ligament, *ligamentum longitudinale anterius*;
3. posterior longitudinal ligament, *ligamentum longitudinale posterius*;
4. ligamentum flavum, *ligamentum flavum*;
5. interspinous ligament, *ligamentum interspinale*;
6. supraspinous ligament, *ligamentum supraspinale*;
7. intervertebral joint, *articulatio intervertebralis*



**Lumbar part of the
vertebral column
(sagittal section)**

Task 2: Indicate the areas of the intervertebral, atlantooccipital, lateral atlantoaxial and median atlantoaxial joints on the following pictures.



**Cervical part of vertebral
column
(lateral aspect)**



**Lateral radiograph of
cervical spine**

**Task 3: Describe the intervertebral joint
in accordance with the following points:**

1. The names of articular surfaces of the joint:

2. The characteristic of the joint according to the Classifications of Synovial Joints:

- based on the numbers of the articular surfaces (*simple or compound*):

- based on the numbers of the axes of movements (*uni-axial, bi-axial or multi-axial*) and shape of articular surfaces:

- based on the simultaneous joint function (*combined or not combined*):

3. The movements at the joint:

4. The ligaments reinforcing the joint:

**Task 4: Describe the atlantooccipital joint
in accordance with the following points:**

1. The names of articular surfaces of the joint:

2. The characteristic of the joint according to the Classifications of Synovial Joints:

- based on the numbers of the articular surfaces (*simple or compound*):

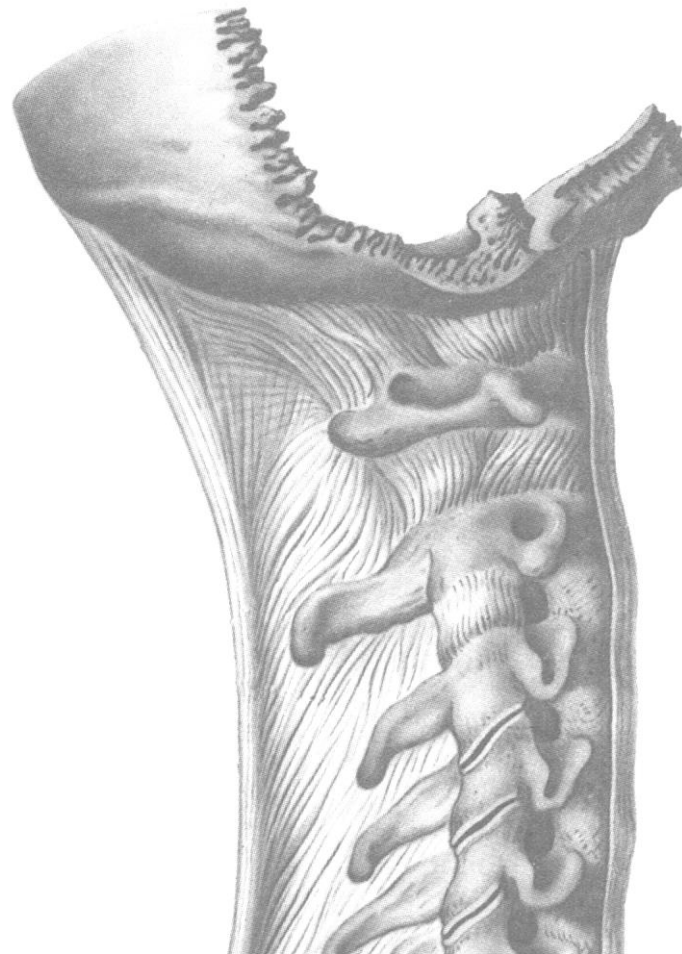
- based on the numbers of the axes of movements (*uni-axial, bi-axial or multi-axial*) and shape of articular surfaces:

- based on the simultaneous joint function (*combined or not combined*):

3. The movements at the joint:

4. The ligaments reinforcing the joint:

Task 5: Indicate the ligaments reinforcing the atlantooccipital joints on the picture, and write the names of the ligaments.



**Cervical part of vertebral
column**

(lateral aspect)

**Task 6: Describe the lateral atlantoaxial joint
in accordance with the following points:**

1. The names of articular surfaces of the joint:

2. The characteristic of the joint according to the Classifications of Synovial Joints:

- based on the numbers of the articular surfaces (*simple or compound*):

- based on the numbers of the axes of movements (*uni-axial, bi-axial or multi-axial*) and shape of articular surfaces:

- based on the simultaneous joint function (*combined or not combined*):

3. The movements at the joint:

4. The ligaments reinforcing the joint:

**Task 7: Describe the median atlantoaxial joint
in accordance with the following points:**

1. The names of articular surfaces of the joint:

2. The characteristic of the joint according to the Classifications of Synovial Joints:

- based on the numbers of the articular surfaces (*simple or compound*):

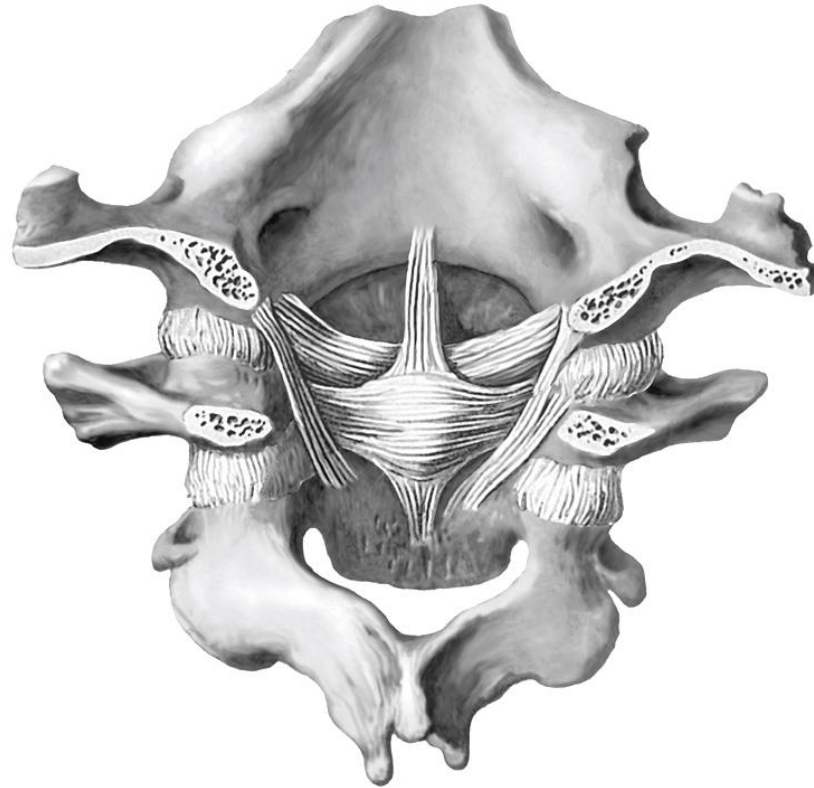
- based on the numbers of the axes of movements (*uni-axial, bi-axial or multi-axial*) and shape of articular surfaces:

- based on the simultaneous joint function (*combined or not combined*):

3. The movements at the joint:

4. The ligaments reinforcing the joint:

Task 8: Indicate the ligaments reinforcing the lateral and median atlantoaxial joints on the pictures, and write the names of the ligaments.



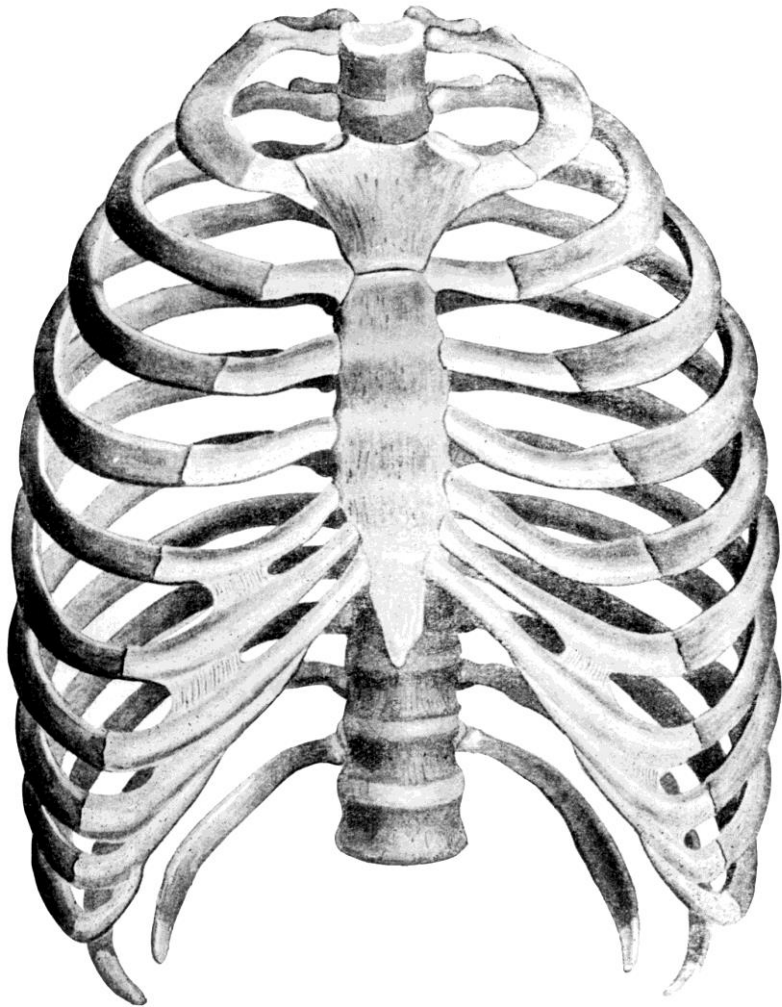
**Junction of I and II cervical
vertebrae and occipital
bone**



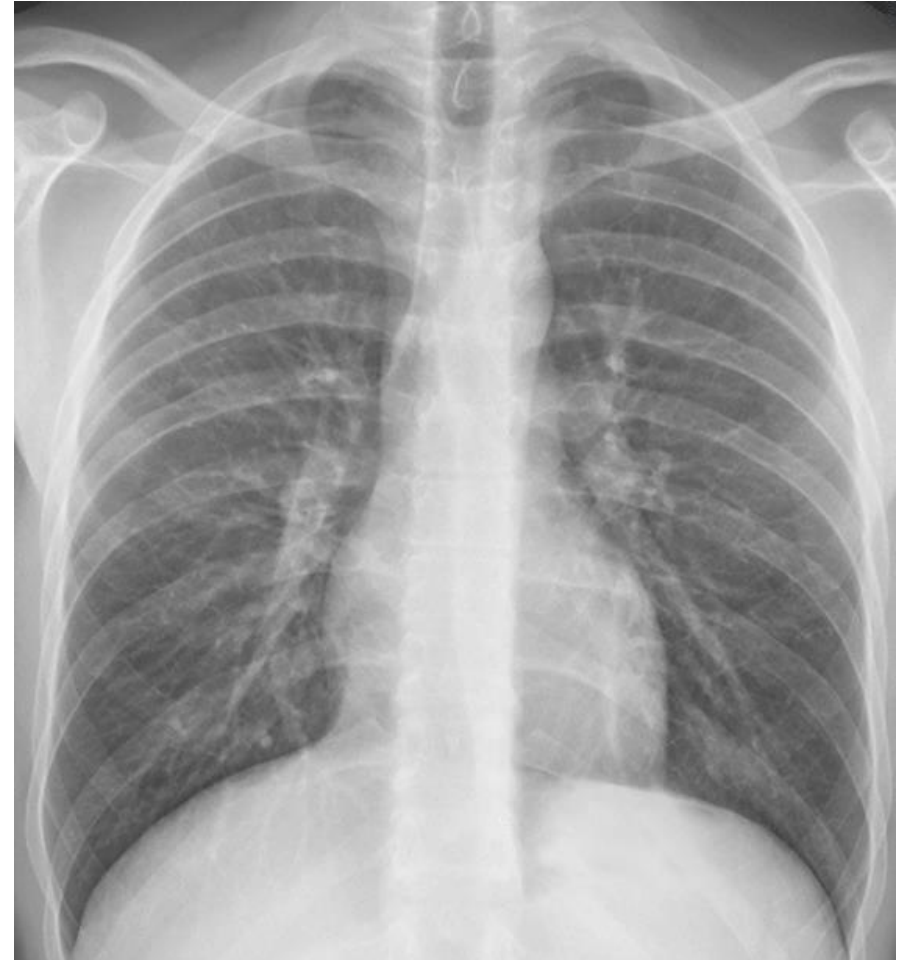
**Junction of atlas with dens
of axis.**

Horizontal section.

Task 9: Indicate the areas of the joint of costal head, the costotransverse joint and sternocostal joint on the pictures.



Thoracic cage
(frontal aspect)



Frontal radiograph
of chest

**Task 10: Describe the joint of costal head
in accordance with the following points:**

1. The names of articular surfaces of the joint:

2. The accessory structure of the joint

3. The characteristic of the joint according to the Classifications of Synovial Joints:

- based on the numbers of the articular surfaces (*simple or compound*):

- based on the numbers of the axes of movements (*uni-axial, bi-axial or multi-axial*) and shape of articular surfaces:

- based on the simultaneous joint function (*combined or not combined*):

4. The movements at the joint:

5. The ligaments reinforcing the joint:

**Task 11: Describe the costotransverse joint
in accordance with the following points:**

1. The names of articular surfaces of the joint:

2. The characteristic of the joint according to the Classifications of Synovial Joints:

- based on the numbers of the articular surfaces (*simple or compound*):

- based on the numbers of the axes of movements (*uni-axial, bi-axial or multi-axial*) and shape of articular surfaces:

- based on the simultaneous joint function (*combined or not combined*):

3. The movements at the joint:

4. The ligaments reinforcing the joint:

**Task 12: Describe the sternocostal joint
in accordance with the following points:**

1. The names of articular surfaces of the joint:

2. The accessory structure of the joint_____

3. The characteristic of the joint according to the Classifications of Synovial Joints:

- based on the numbers of the articular surfaces (*simple or compound*):

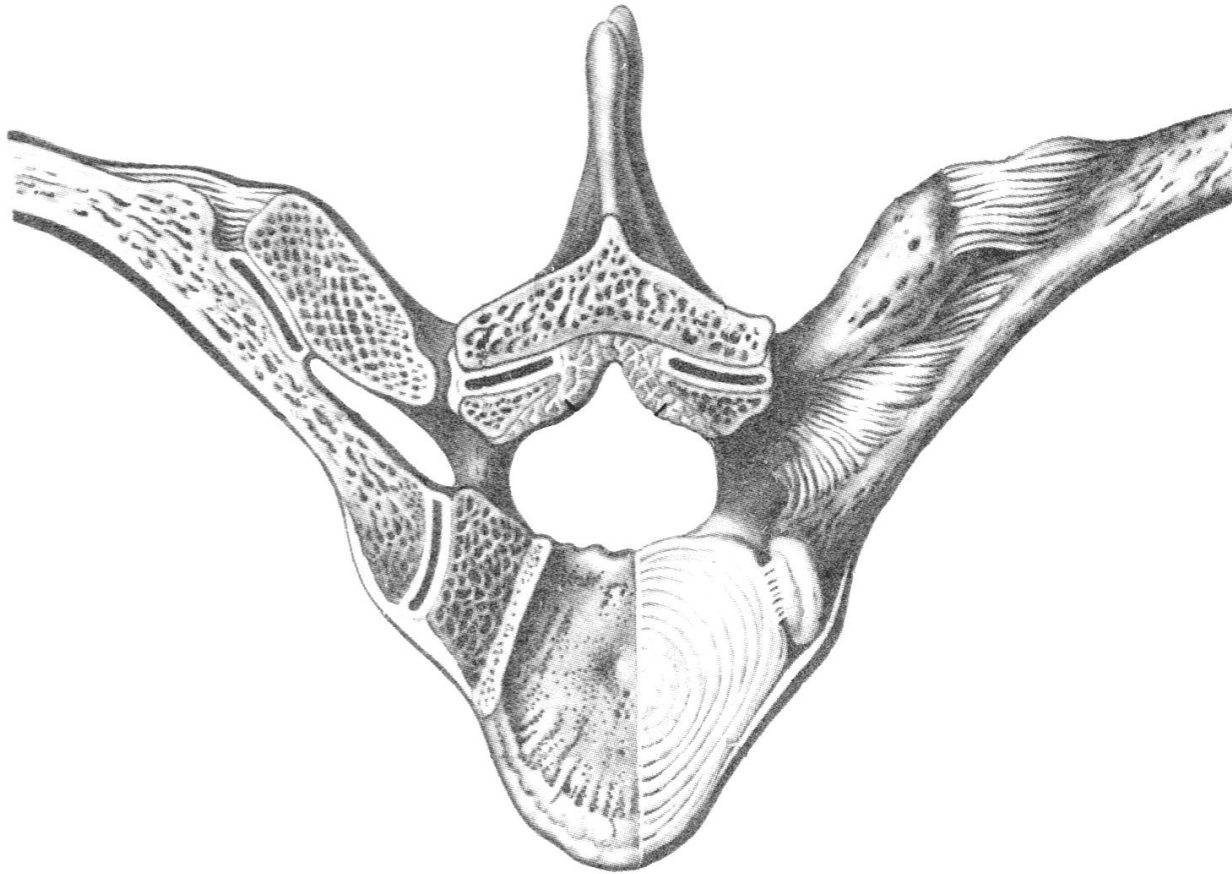
- based on the numbers of the axes of movements (*uni-axial, bi-axial or multi-axial*) and shape of articular surfaces:

- based on the simultaneous joint function (*combined or not combined*):

4. The movements at the joint:

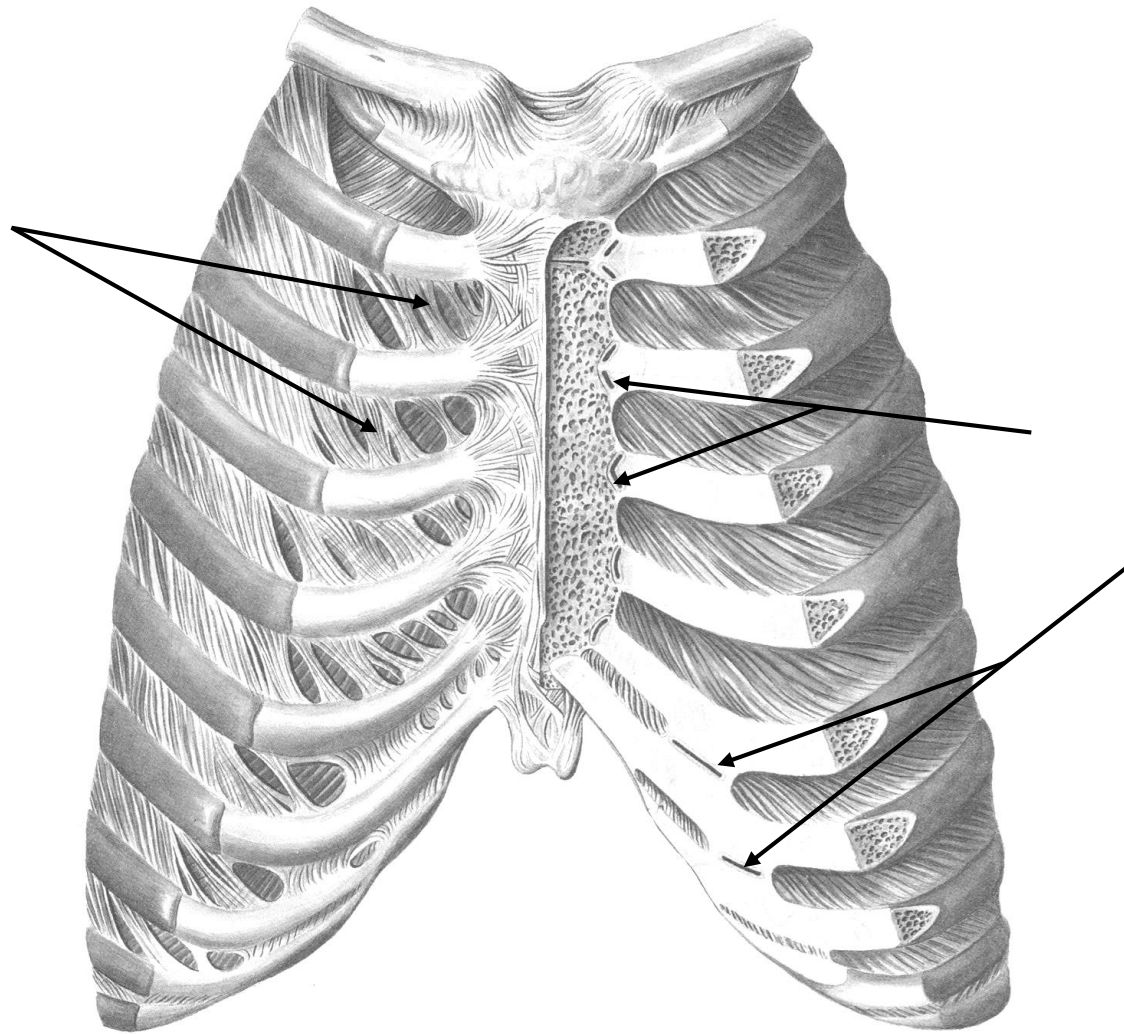
5. The ligaments reinforcing the joint:

Task 13: Indicate the ligaments reinforcing the joint of costal head and costotransverse joint on the picture and write the names of the ligaments.



**Joints of ribs and vertebrae
(superior aspect)**

Task 14: Indicate the ligaments reinforcing the sternocostal joints on the picture, and write the names of the ligaments.
Task 15: Write the structures marked with arrows.



Thoracic cage
(anterior aspect)